



The Alliance
December 12, 2013

Western North Slope Developments

Nick Olds, Vice President
North Slope Operations & Development



Cautionary Statement

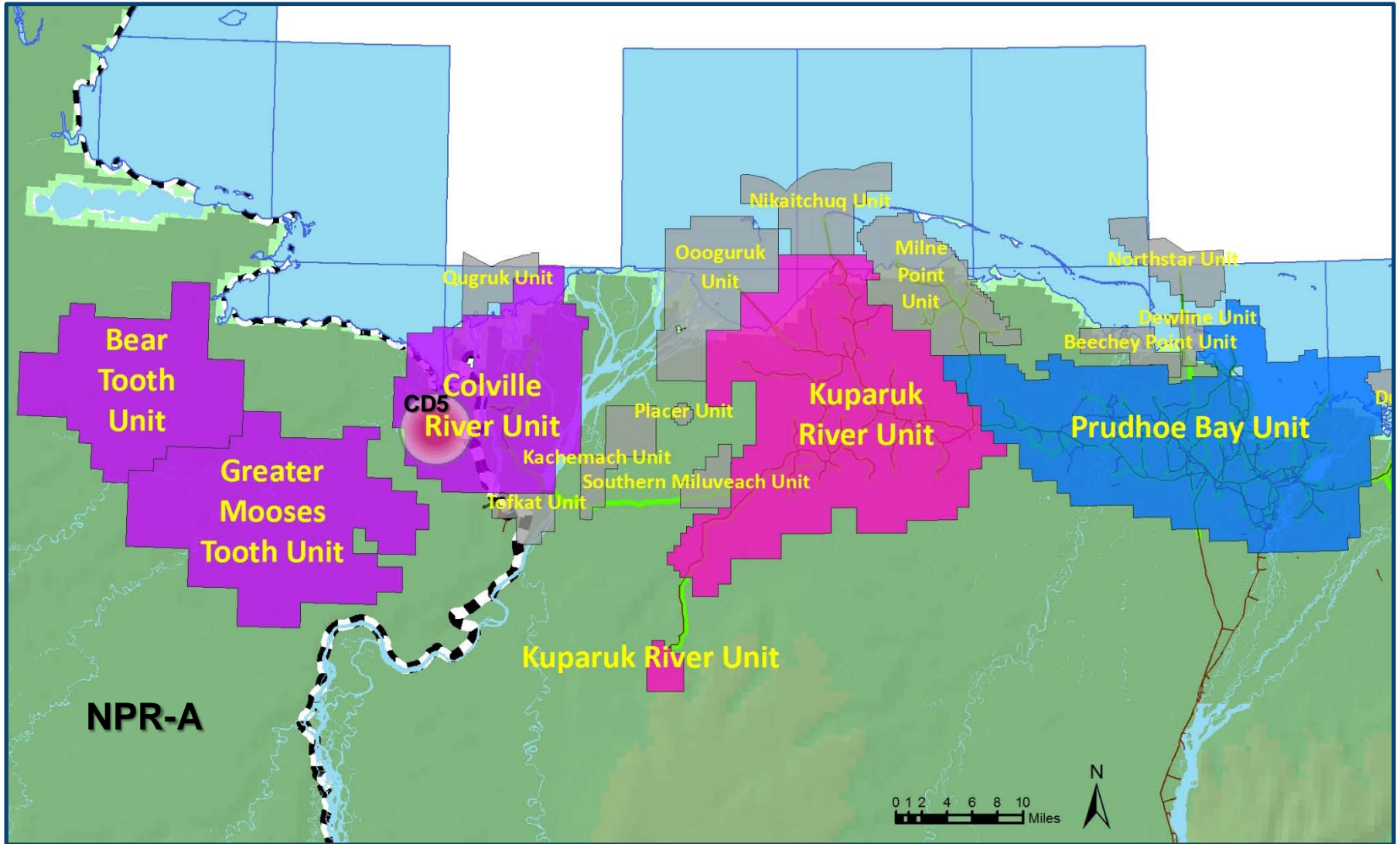
The following presentation includes forward-looking statements. These statements relate to future events, such as anticipated revenues, earnings, business strategies, competitive position or other aspects of our operations or operating results. Actual outcomes and results may differ materially from what is expressed or forecast in such forward-looking statements. These statements are not guarantees of future performance and involve certain risks, uncertainties and assumptions that are difficult to predict such as oil and gas prices; operational hazards and drilling risks; potential failure to achieve, and potential delays in achieving expected reserves or production levels from existing and future oil and gas development projects; unsuccessful exploratory activities; unexpected cost increases or technical difficulties in constructing, maintaining or modifying company facilities; international monetary conditions and exchange controls; potential liability for remedial actions under existing or future environmental regulations or from pending or future litigation; limited access to capital or significantly higher cost of capital related to illiquidity or uncertainty in the domestic or international financial markets; general domestic and international economic and political conditions, as well as changes in tax, environmental and other laws applicable to ConocoPhillips' business and other economic, business, competitive and/or regulatory factors affecting ConocoPhillips' business generally as set forth in ConocoPhillips' filings with the Securities and Exchange Commission (SEC).

Use of non-GAAP financial information – This presentation may include non-GAAP financial measures, which help facilitate comparison of company operating performance across periods and with peer companies. Any non-GAAP measures included herein will be accompanied by a reconciliation to the nearest corresponding GAAP measure in an appendix.

Cautionary Note to U.S. Investors – The SEC permits oil and gas companies, in their filings with the SEC, to disclose only proved, probable and possible reserves. We use the term "resource" in this presentation that the SEC's guidelines prohibit us from including in filings with the SEC. U.S. investors are urged to consider closely the oil and gas disclosures in our Form 10-K and other reports and filings with the SEC. Copies are available from the SEC and from the ConocoPhillips website.



ConocoPhillips North Slope Assets

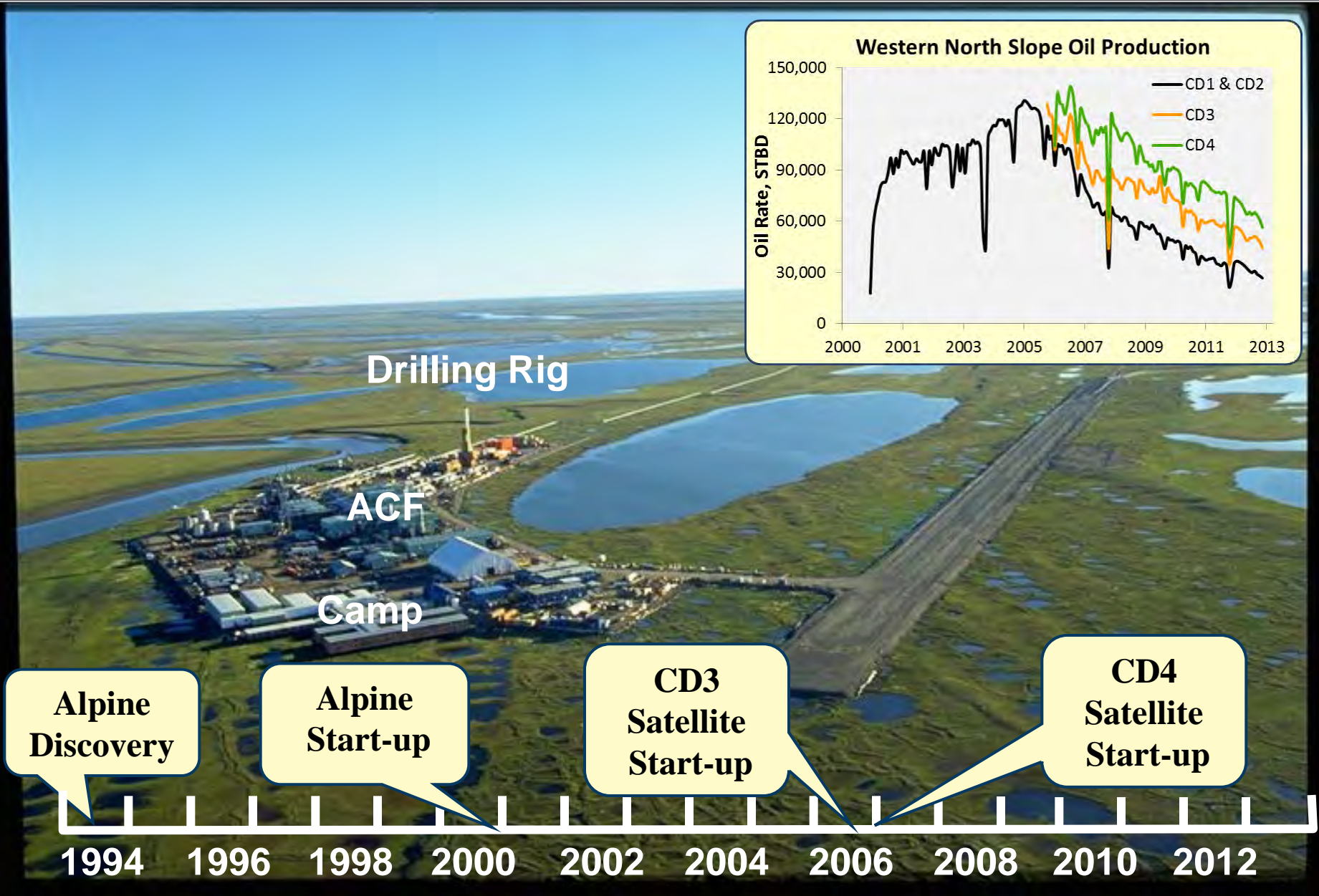


Western North Slope ("WNS") – 78% WI

Kuparuk – 52-55% WI

Prudhoe – 36% WI

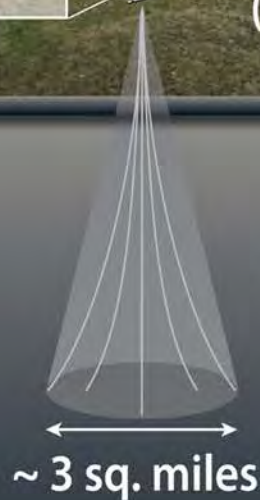
Historical Western North Slope Development



Alaska North Slope Reduced Footprint *



65 Acre Gravel Pad
(1970)**



13 Acre Gravel Pad
(1999)**

Drilling Area
Accessible
from Pads



* Assumes similar reservoir depth

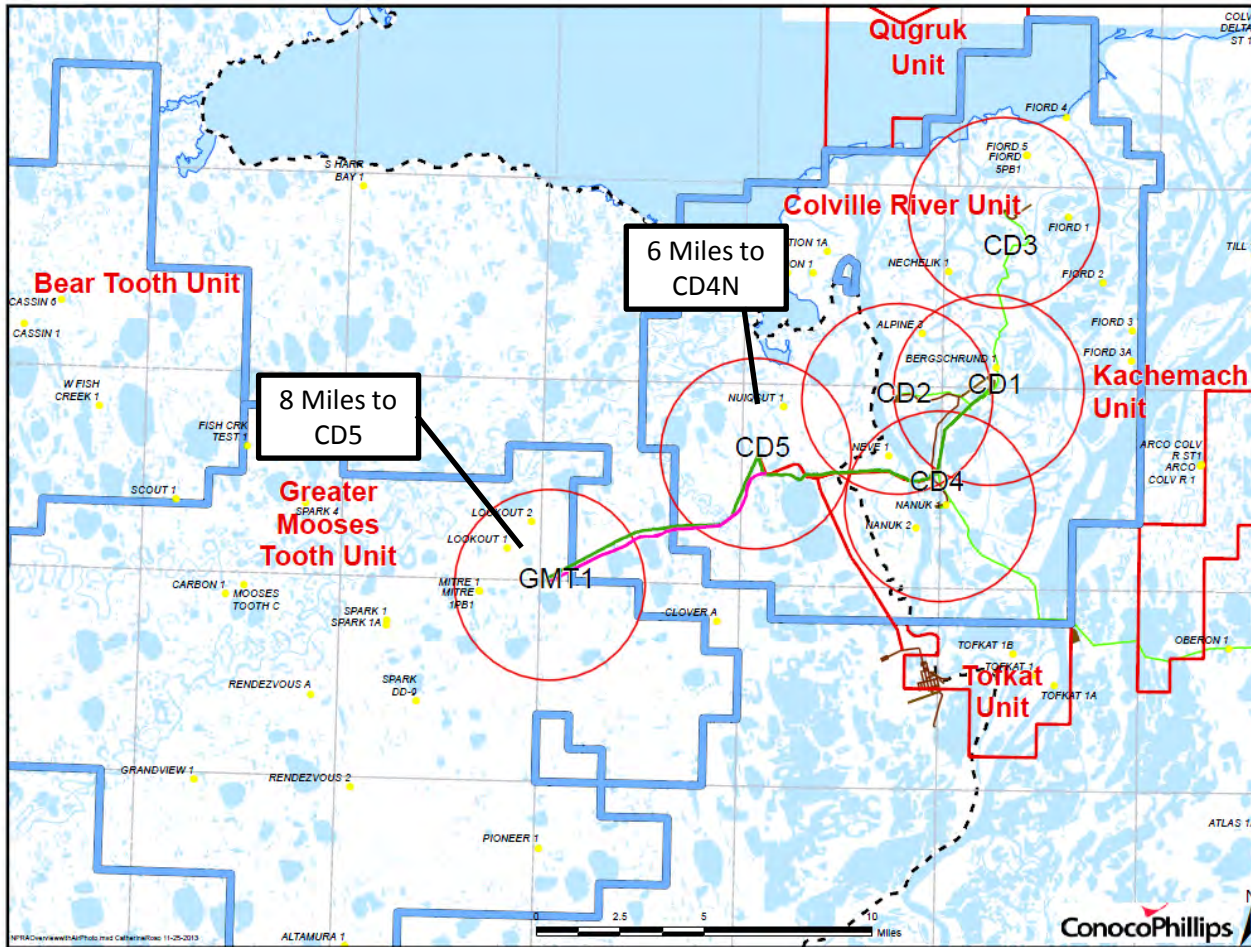
** 1970 Drilling Radius ~ 5,000 ft vs. 1999 Drilling Radius ~ 20,000 ft

What Makes Alpine Unique

- Native Land
 - Surface and royalty owner, Kuukpik Native Corporation
 - Royalty owner ASRC (Arctic Slope Regional Corporation)
 - Close proximity to Nuiqsut (~8 miles)
- Very Small Footprint (~163 acres total gravel)
 - Extended reach drilling, horizontal wells
 - Single-train plant / highly automated
- Sensitive Environmental Location
 - Colville Delta 2nd largest river delta in US
 - Abundant wildlife
 - Subsistence hunting
 - Near-zero discharge facility
- No Year-round Access
 - Challenging logistics



NPR-A Development Phasing

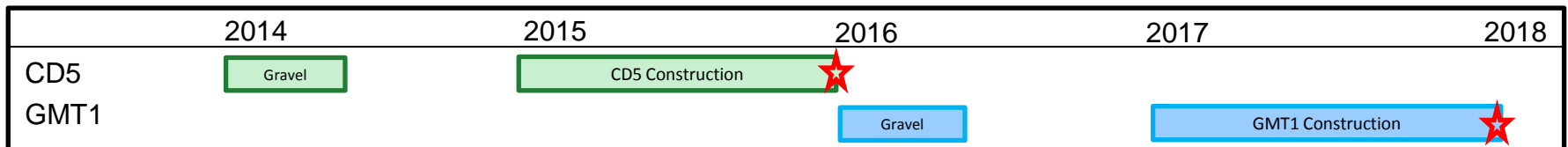


Sequential Level Loaded Development Strategy:

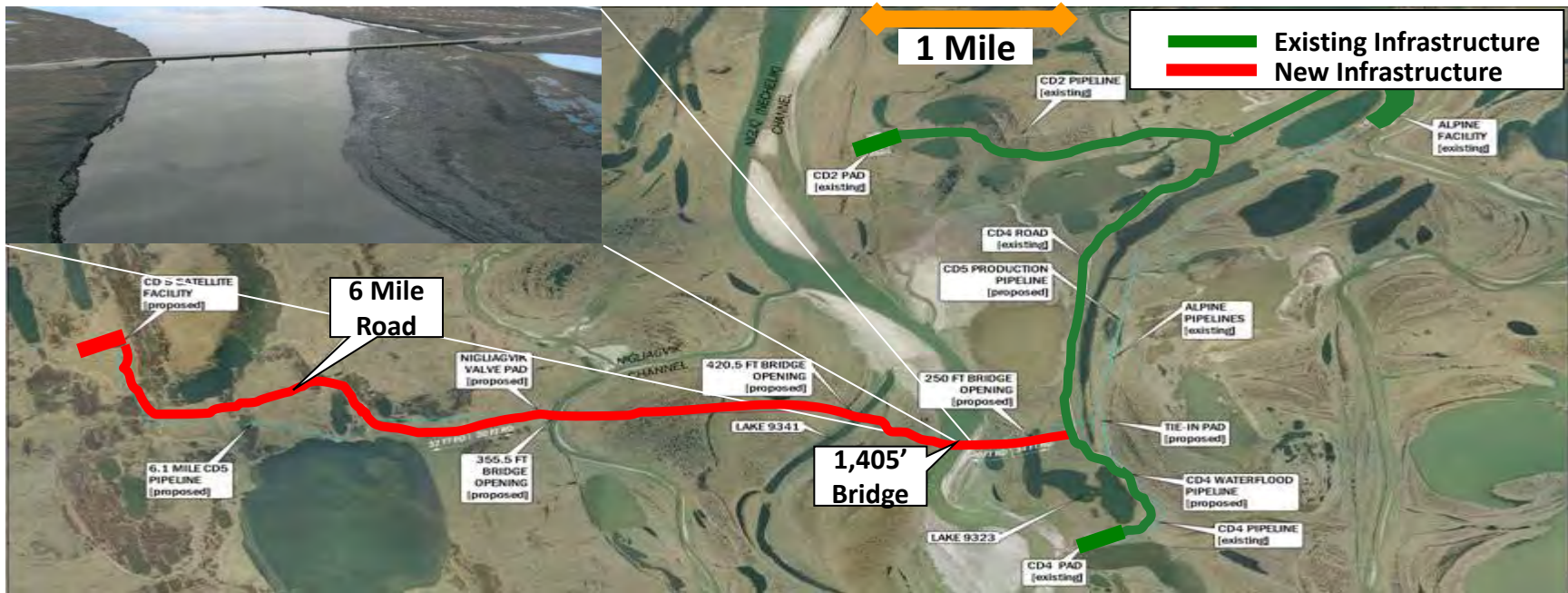
- Efficient use of limited company and agency resources (personnel)
- Efficient use of existing Alpine infrastructure
- Apply lessons learned from previous developments
- Reduced impact on environment and local residents

★ **First Oil**

Potential Timeline



CD5 Project Scope



Facilities:

- 6-mile gravel road
- 11.7 acre gravel well pad
- Niqliq Channel bridge and 3 additional bridges
- Pipeline, power and communication infrastructure

Drilling:

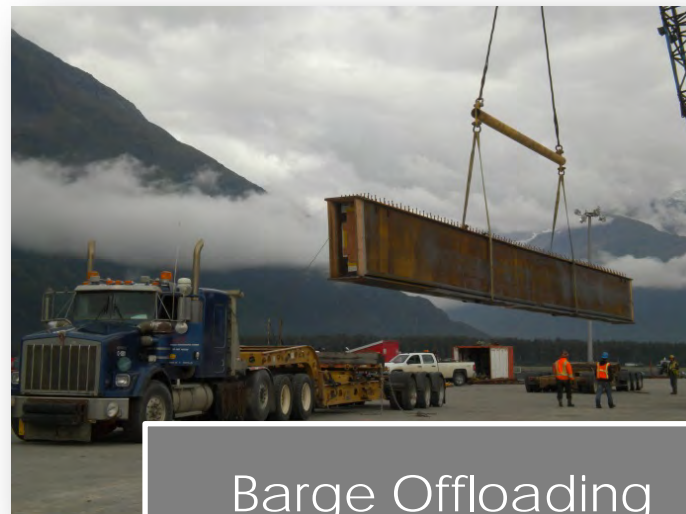
- Drill and complete 15 wells (7 producers and 8 water/ miscible gas injectors)
- Potential for up to 33-well development
- Multi-stage fracs in 6 Alpine producers

Employment:

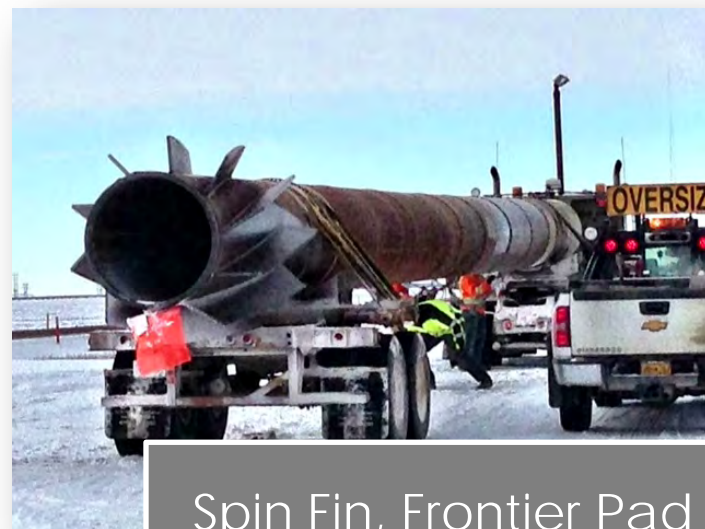
- 500+ North Slope jobs required during two winter construction seasons
- Major fabrication activities in Anchorage and Fairbanks

CD5 Development Progress

- CD5: On Schedule – On Budget
- 36 of 56 Contracts Executed
- Long-lead Material Procured
- Fabrication of Bridges On Schedule
- Infrastructure in Place for 2014 Construction Activities
- 2014 Winter – Planned Activity
 - Build ice roads: November-January
 - Bridge construction: January-April
 - Install gravel: January-April
 - Module and pipeline fabrication
- First Oil Dec 2015
- Estimated Peak Production 16,000 BOPD

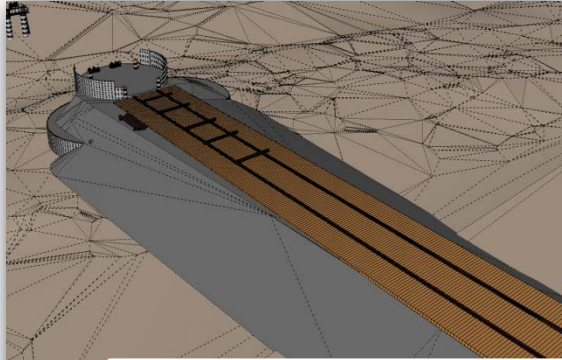


Barge Offloading



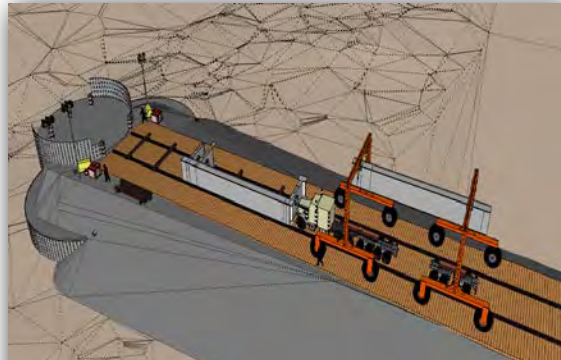
Spin Fin, Frontier Pad

Nigliq Channel Bridge Launch – Fall 2014



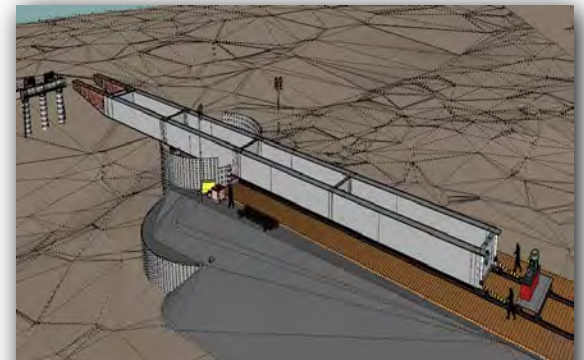
Launch Track

- Rig Mats
- Track and Trolley Beams



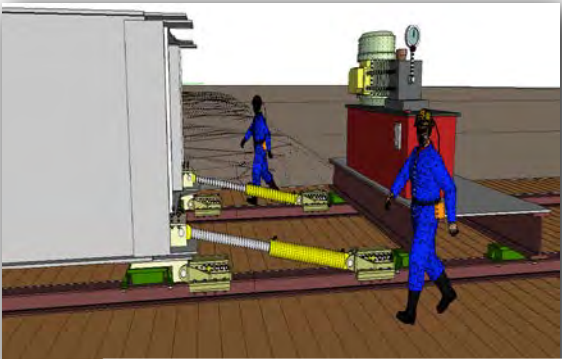
Bridge Assembly

- Use tandem gantry cranes



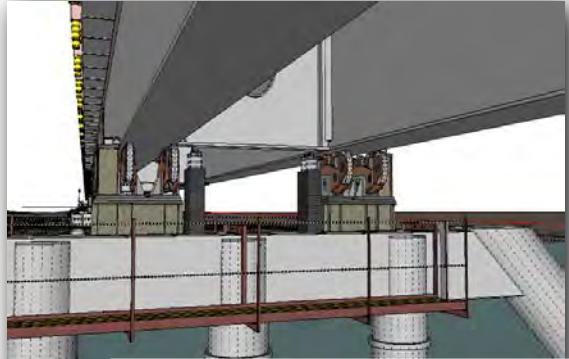
Launch Girders

- 8 separate launches
- Longest = 220 LF



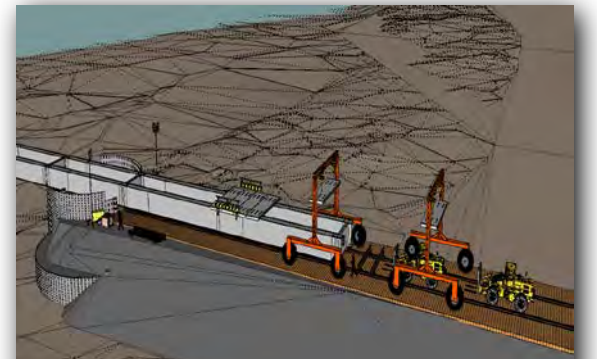
Launch Hydraulics

- 2 each – 170 ton cylinders
- Moves in ~4'-6" increments



Jack Down Process

- Jack up and remove rollers
- Bridge lowered in sections



Panels and Guardrail

- Installed after span 1 and 2
- Left out at HSM's, pier caps, hinge splices

Greater Mooses Tooth 1 (GMT1) – Development Overview

➤ Potential Project Scope

- Would be first development in Greater Mooses Tooth Unit
- Development would be on Alaska Native and Federal leases

➤ Proposed Facilities

- 8-mile gravel road with 2 bridges
- 11.8 acre gravel well pad
- Pipeline, valve pads, power and communication infrastructure

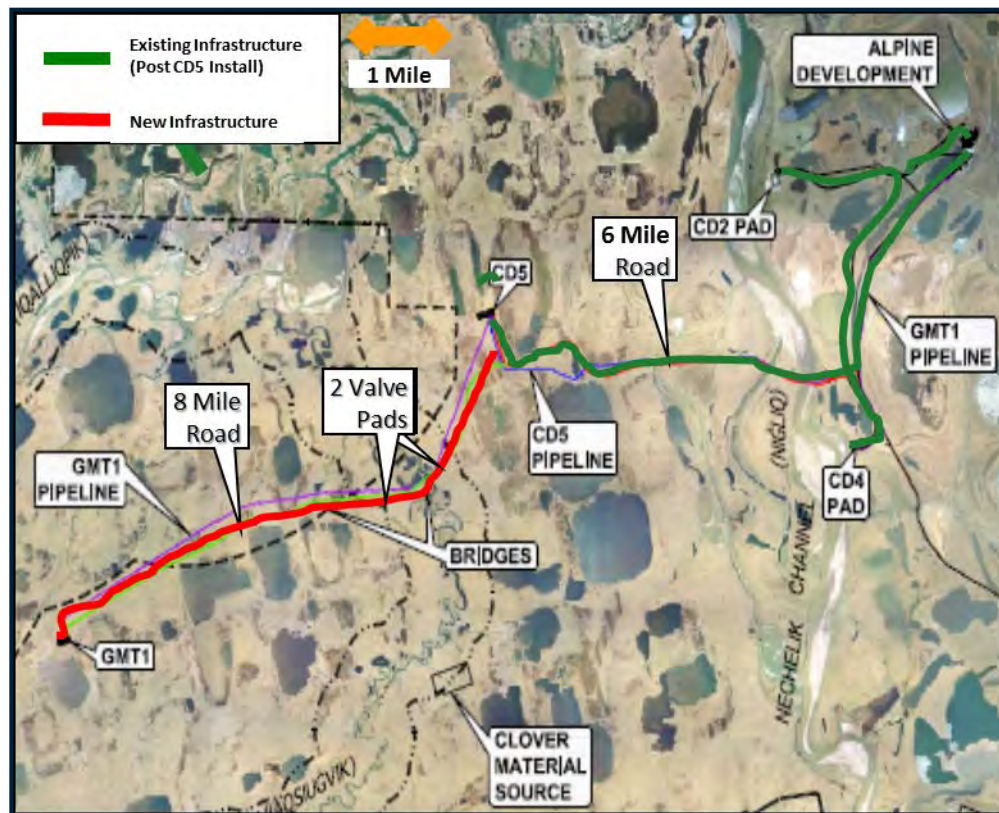
➤ Proposed Drilling

- Drill and complete 8 wells (3 producers and 5 water/ miscible gas injectors)
- Potential for additional wells development

➤ Project Status

- Applied for development permits in July, 2013
- Project sanction target 4Q 2014

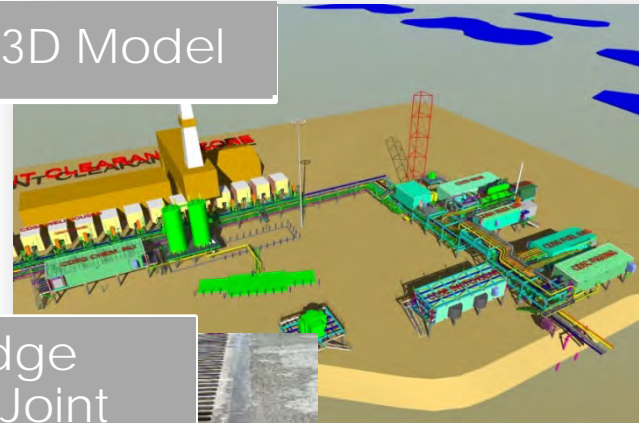
➤ First Oil Proposed late 2017



CD5 and NPRA Growth Impacts

- Adding Production To TAPS
- 500+ North Slope Jobs Required During Winter Construction Seasons 2014 and 2015
- 100+ Alaska Engineering Jobs
- More Than 20 Alaska Contract Companies Currently Engaged on CD5
 - Pipeline installation and facility installation contracts in 2014
- GMT1 Proposed to Follow With Similar Size Project on Two-year Cycle

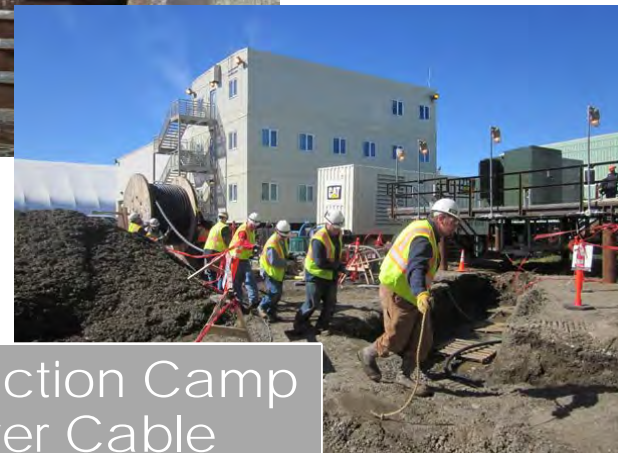
CD5 3D Model



Nigliq Bridge Expansion Joint



Construction Camp Power Cable



Passage of SB21 Signals Progress for the Future

Senate Bill 21 Increases the Likelihood of More Projects Moving Ahead

- **Rig in Kuparuk Added in Late May**
 - Supporting 100 direct jobs and hundreds more indirect jobs*
 - New production already brought online >1,600 BOPD
- **Kuparuk Drill Site 2S**
 - Peak workforce during construction will top 230 jobs
 - ~\$600 million cost to develop; seeking approval in late 2014
 - Laying gravel this winter to prepare for construction
 - Estimated peak production: 8,000 BOPD gross, first oil in late 2015
- **NPR-A Development (Greater Mooses Tooth #1)**
 - Would create 400 jobs plus hundreds more in support positions during construction
 - ~\$900 million cost to develop; seeking approval in late 2014
 - Estimated peak production: 30,000 BOPD gross, first oil in late 2017
- **Additional Rig Coming to Kuparuk in January 2014**
 - Supports another 100 direct, hundreds of indirect jobs
- **Prudhoe Projects**
- **Winter 2014 Exploration in NPR-A**



*Source: ISER: Petroleum Jobs & Revenue, Feb. 25, 2013