

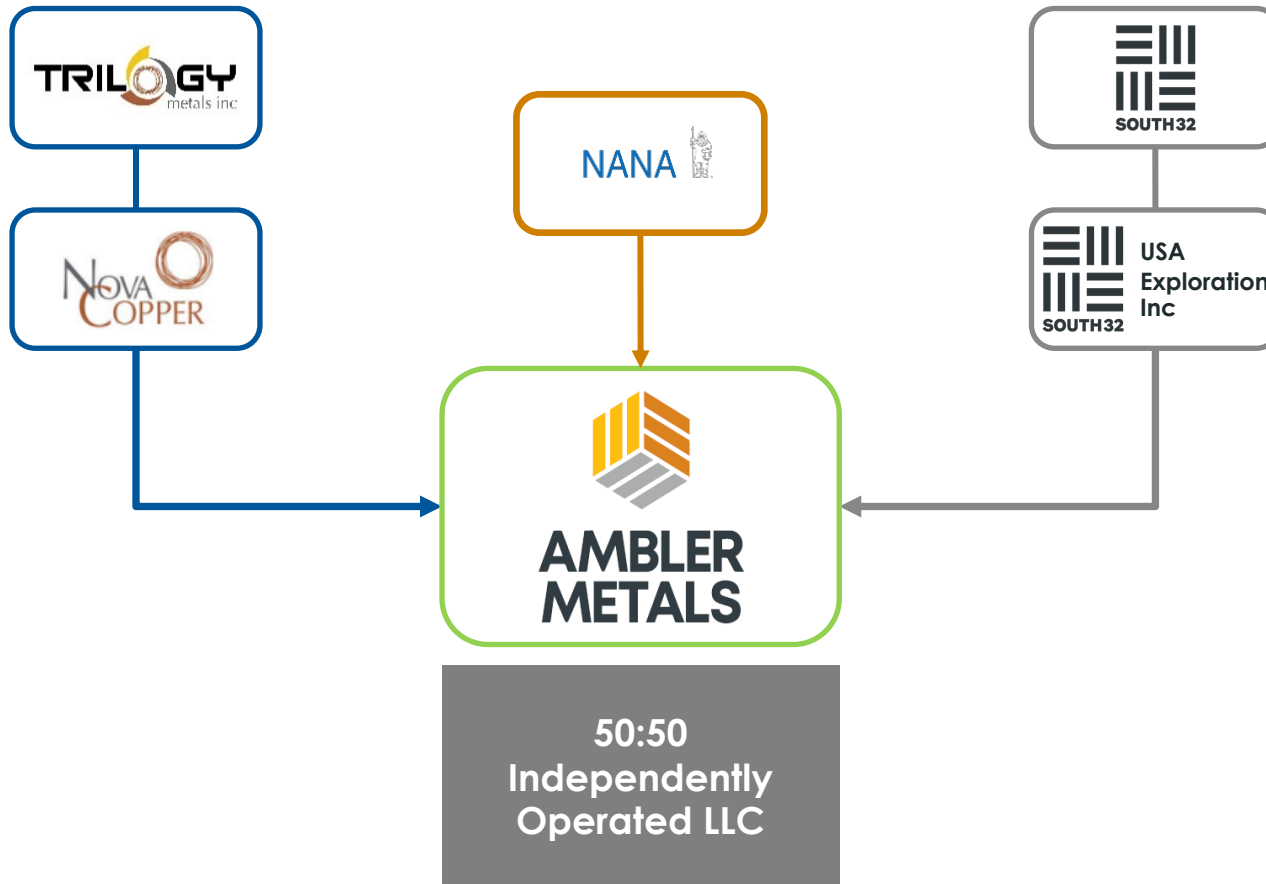


# THE ALLIANCE FAIRBANKS INDUSTRY UPDATE FORUM

**Ramzi R Fawaz**  
President & CEO Ambler Metals

**October 13, 2022**

# INTRODUCTION TO AMBLER METALS



- Ambler Metals LLC (AMC) formally established February 11, 2020
- 50%-50% Joint Venture between South32 and Trilogy Metals
- Alaskan Company with offices in Anchorage and Fairbanks
- Two potential mining projects in pre-development: Arctic & Bornite
- Partnership with NANA Regional Corporation for the exploration and development of the Upper Kobuk Mineral Projects (UKMP)
- Development Agreement with AIDEA to co-fund the Feasibility & Permitting Stage of the Ambler Access Project

## 2022 Field Season

- Plan and execute a safe and effective 2022 summer field program
- ~ 10,000 m of drilling planned in 2022

## Studies & Permitting

- Complete prep work leading to a CWA Sec. 404 permit submission for Arctic
- Progress Arctic's prefeasibility study through stage gate approval

## Ambler Access Project

- Support Ambler Access Project's 2022 Annual Work Plan
- Continued intervention on the two lawsuits

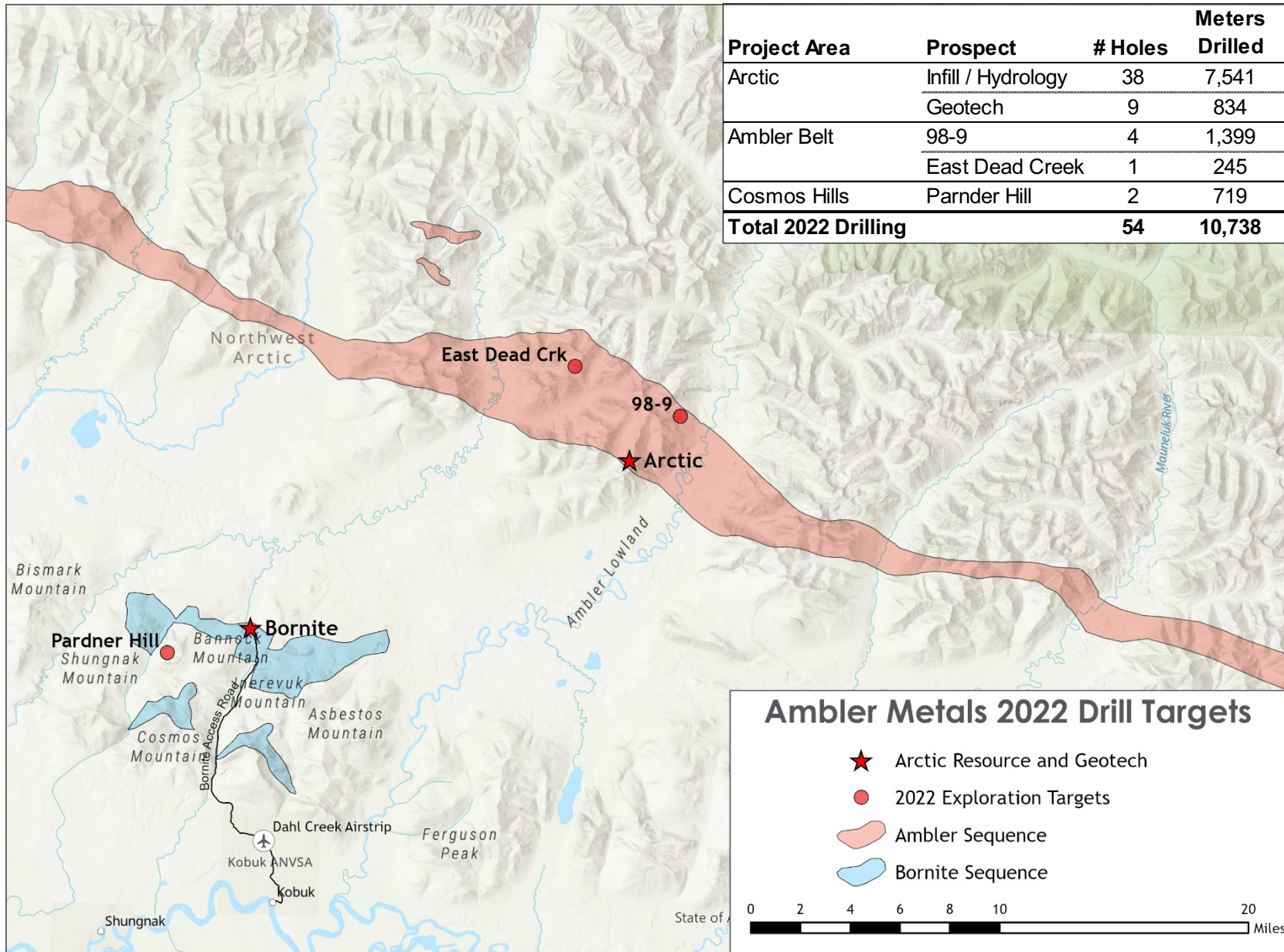
## Environmental, Social & Governance

- In partnership with NANA, engage with communities and stakeholders to ensure regional interests are respected and protected
- Maintain an effective organization, underpinned by strong fiscal systems and internal controls

## EXPLORATION

- Three drills operated by Major Drilling
  - Two focused on resource infill, geotechnical, and hydrogeologic holes at Arctic
  - One drill started near Bornite at Pardner Hill before moving to the VMS Belt and finished the season in Arctic
- 10,738 m completed vs. 10,100 m planned
  - Arctic – 8,376 m
  - Ambler Belt - 1,644 m
  - Cosmos Hills – 719 m
- Extensive soil sampling and geologic mapping was conducted throughout the region
- 3,947 samples taken from 4,319 locations visited
  - Ambler Belt – 3,129 samples taken
  - Cosmos Hills – 818 samples

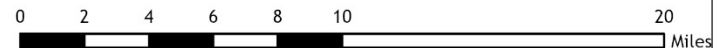
# 2022 DRILL PROGRAM



Project Area	Prospect	# Holes	Meters Drilled
Arctic	Infill / Hydrology	38	7,541
	Geotech	9	834
Ambler Belt	98-9	4	1,399
	East Dead Creek	1	245
Cosmos Hills	Pardner Hill	2	719
<b>Total 2022 Drilling</b>		<b>54</b>	<b>10,738</b>

## Ambler Metals 2022 Drill Targets

- ★ Arctic Resource and Geotech
- 2022 Exploration Targets
- Ambler Sequence
- Bornite Sequence

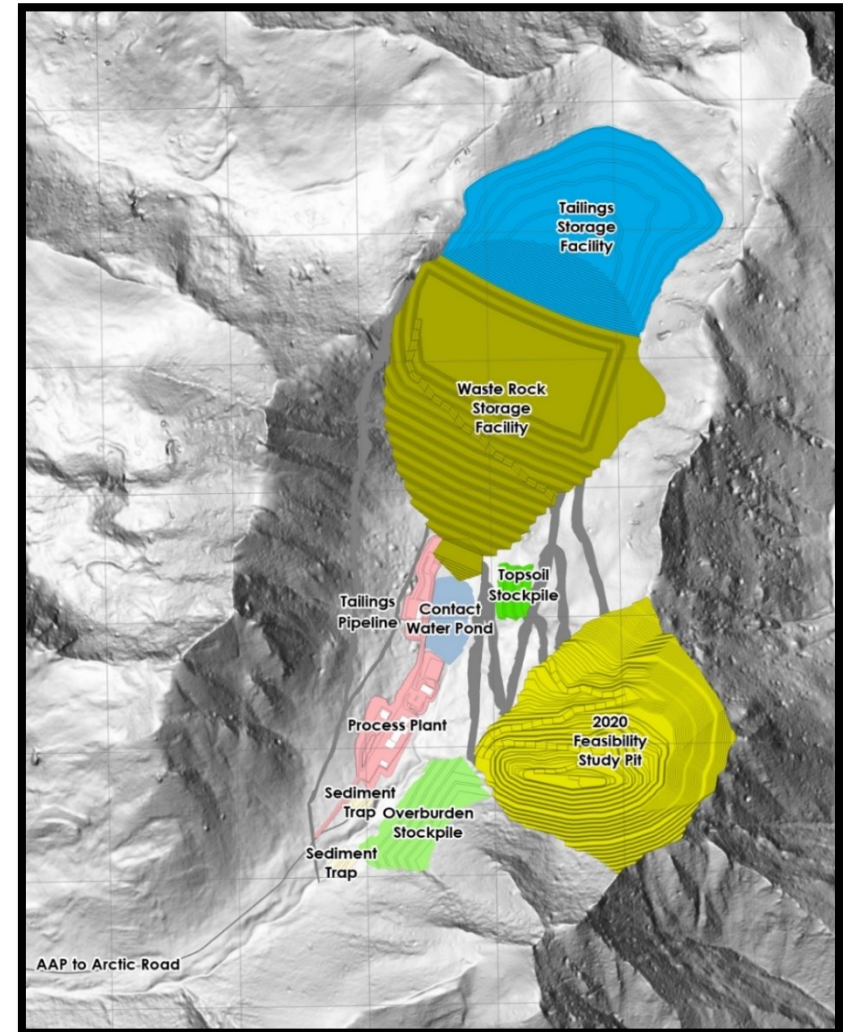


## PROPOSED MAJOR FACILITIES

- Open Pit
- Tailings Storage Facility
- Waste Rock Storage Facility
- Contact Water Pond
- Overburden & Topsoil Stockpiles
- Process Plant

## WORKFORCE

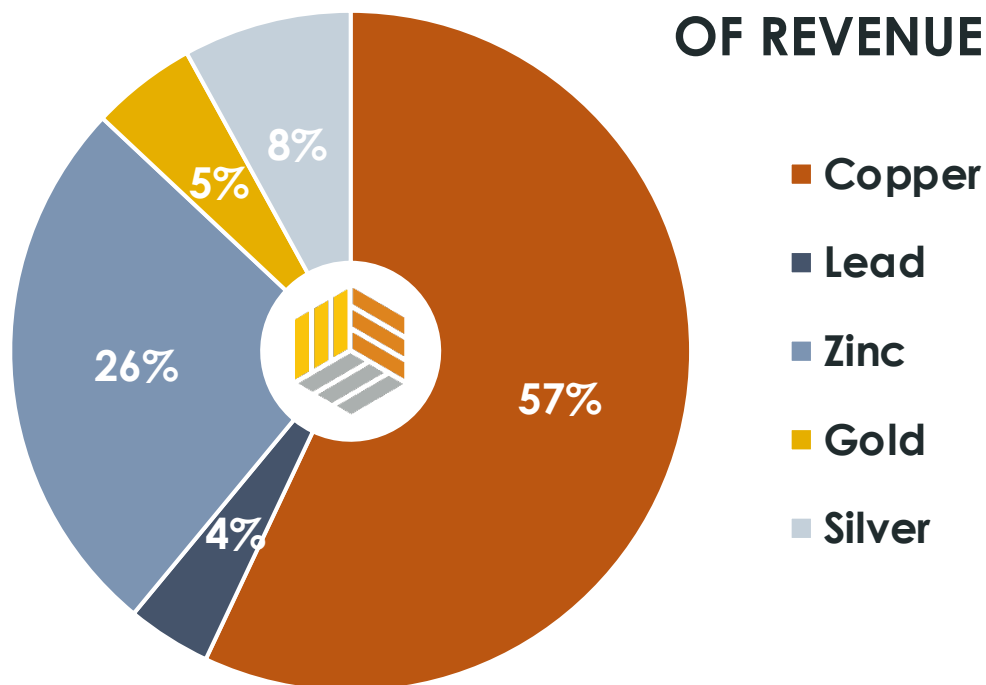
- Exploration ~ 100
- Construction ~ 600
- Mine Operations ~ 450



## FORECAST ANNUAL METAL PRODUCTION

- 155M lbs Cu
- 192M lbs Zn
- 32M lbs Pb
- 3.4M oz Ag
- 32K oz Au

## PERCENTAGE OF REVENUE





## Clean Water Act 404 Permit

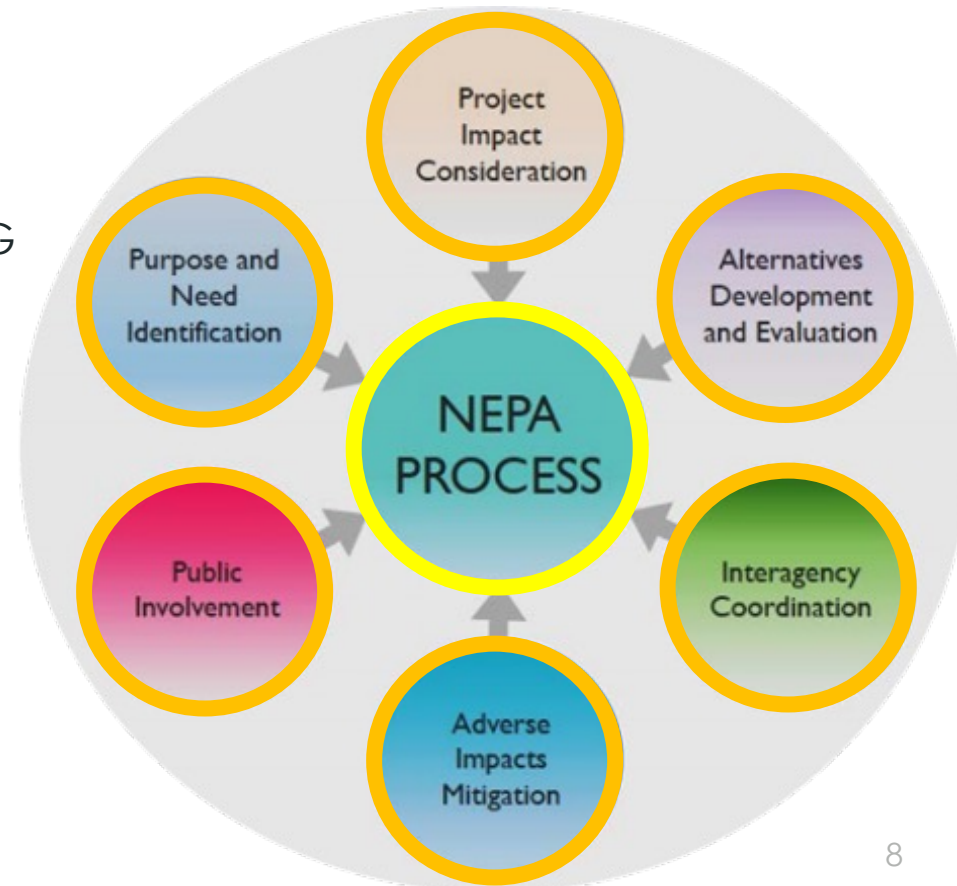
- Planning to submit application in 2023
- Submission→NOI→Scoping→Draft EIS→Final EIS→Record of Decision
- Multi-year process with several public comment opportunities

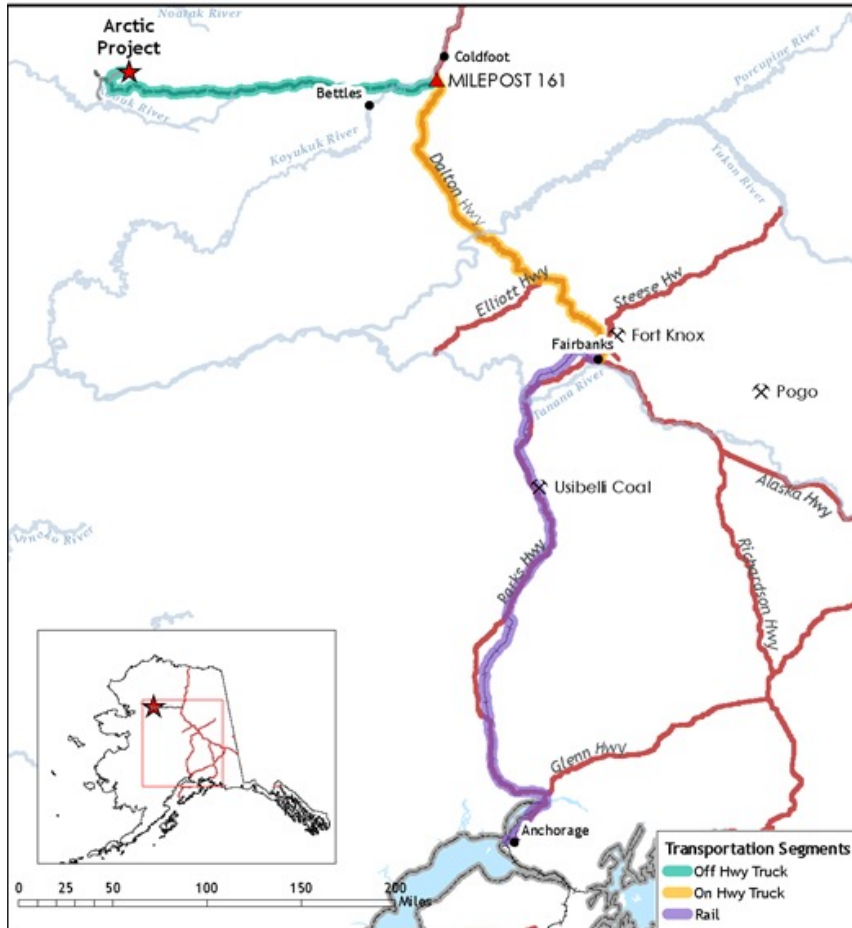
## State Permitting

- Many state permits required
- Working with ADNR, ADEC, and ADF&G

## Northwest Arctic Borough

- Rezoning required
- Plan to submit application in 2023





## ARCTIC MINE TO DALTON HIGHWAY VIA AAP

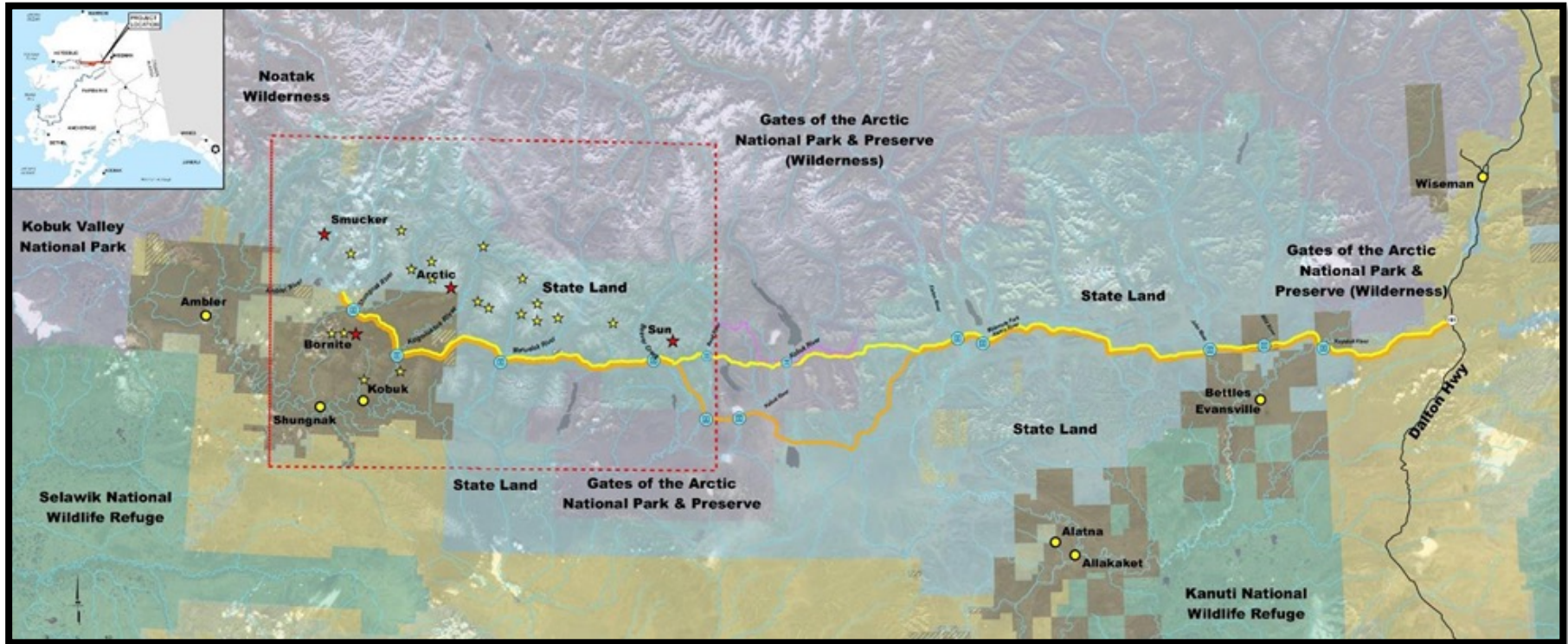
- 214 Miles
- Off-highway trucks
- 2 containers per truck

## DALTON HIGHWAY JUNCTION TO FAIRBANKS

- 240 Miles
- On-highway trucks
- 1 container per truck due to Dalton Hwy weight restrictions

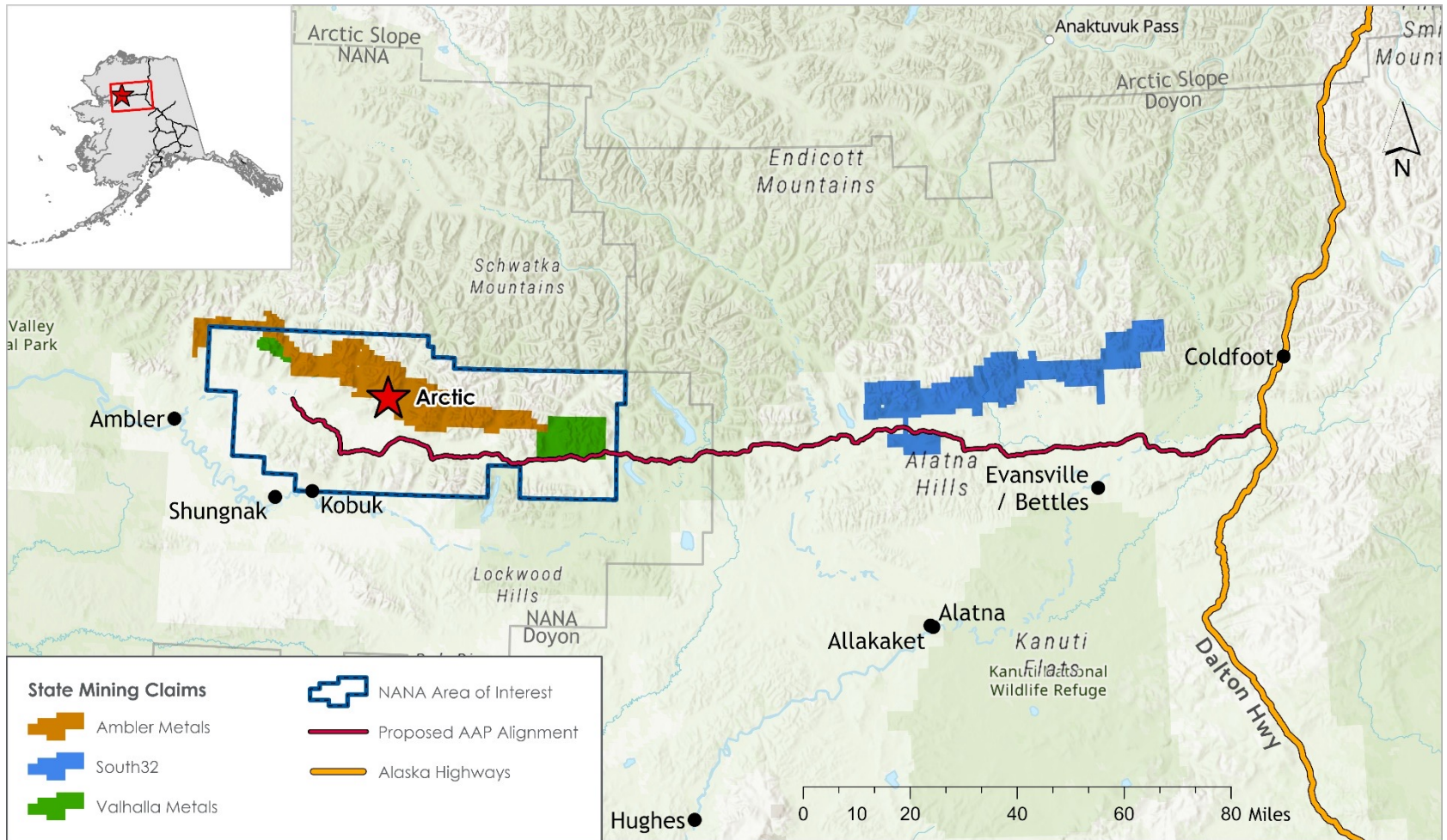
## FAIRBANKS TO ANCHORAGE BY RAIL

- 360 miles
- 2 dedicated trains per week with extras on mixed load trains



- Proposed 211-mile private controlled industrial access road to the Ambler Mining District in northwestern Alaska.
- Access to Ambler Mining District mandated by the Alaska National Interest Lands Conservation Act (ANILCA) in 1980.

# AMBLER ACCESS – CLAIMS ALONG ROUTE



Alaska State Mining Claims along the Proposed Ambler Access Road Alignment

- **July 23, 2020** - Joint Record of Decision (JROD) was issued by the BLM & Army Corps of Engineers
- **Q4, 2020** - Two lawsuits against the Federal Agencies who approved the FIES/JROD .
- **Q1, 2021** - NANA, State of Alaska, AIDEA, and Ambler Metals are Intervenor Defendants.
- **January 5, 2021** – National Park Service (NPS) and BLM approved their ROWs
- **Feb 22, 2022** - Dept of Interior (DOI) filed a motion to remand the Record of Decision on the EIS. (DOI said a Supplemental EIS is required to address what it calls deficiencies related to Cultural Heritage and Subsistence matters)
- **March 11 & March 14, 2022** - DOI suspended the BLM and NPS ROW's respectively
- **May 16, 2022** – Court approved the government's voluntary remand motion
- **July 16, 2022** – Federal defendants first report to the court did not advise a remand timeline
- **September 16, 2022** – Federal defendants provided second status report to court, which said they anticipate publishing a Draft Supplemental Environmental Impact Statement (SEIS) during the second quarter of 2023
- **September 20, 2022** – BLM published the NOI in the federal register and initiated a 45-day scoping period and their intention to prepare a SEIS.

## Cultural Resources

Continue field surveys and consultation through the Tribal Liaison Program.

## Geotechnical Investigations

Characterize subsurface conditions of the riverine environment, general soil characteristics along alignment, and assess viability of material sites. Borings at 45 river crossings, 11 material sites and 10 roadway sites along alignment. Summer and winter activities planned.

## H+H Investigations

Assess conditions for area drainage, culvert placement, and bridge design; spring breakup monitoring at 26 rivers; establish stream gauges at bridge sites.

## Land Survey Activities

Establish land ownership boundaries, bodies of water, and major design features; survey Northwest Arctic Borough boundary; survey alignment over 4 months for land ownership and project features.

## Roadway Design

Establish project design criteria, advance preliminary engineering to 35% design.

## Fish Habitat Studies

ADF&G will continue 2021 field efforts to collect fish habitat, water quality, species presence, or critical spawning area data, focusing on mid-alignment (MP 58-130) at 57 locations.

## Wetland Investigations

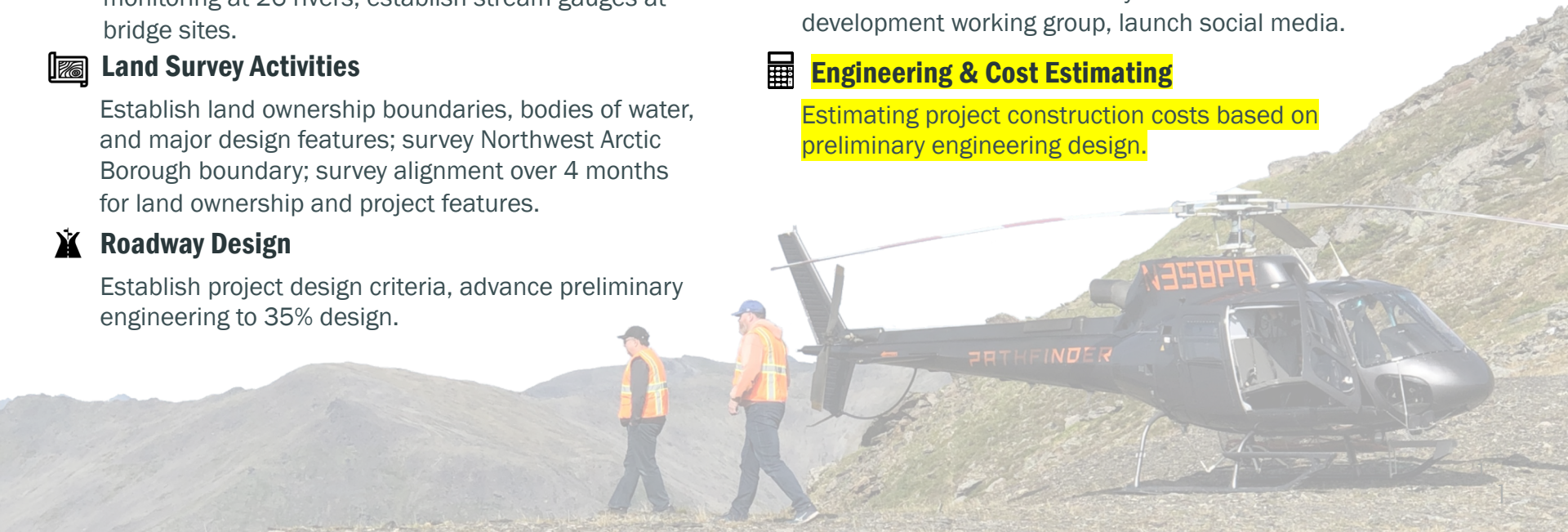
Field evaluation of eastern 50 miles of alignment; survey for wetlands and waters of the U.S.; invasive species, if found; sensitive plant species, if found.

## Stakeholder Outreach

Website update, calendar of events, mail newsletter, distribute press releases (letters of support, etc.), continue subsistence advisory committee & workforce development working group, launch social media.

## Engineering & Cost Estimating

Estimating project construction costs based on preliminary engineering design.

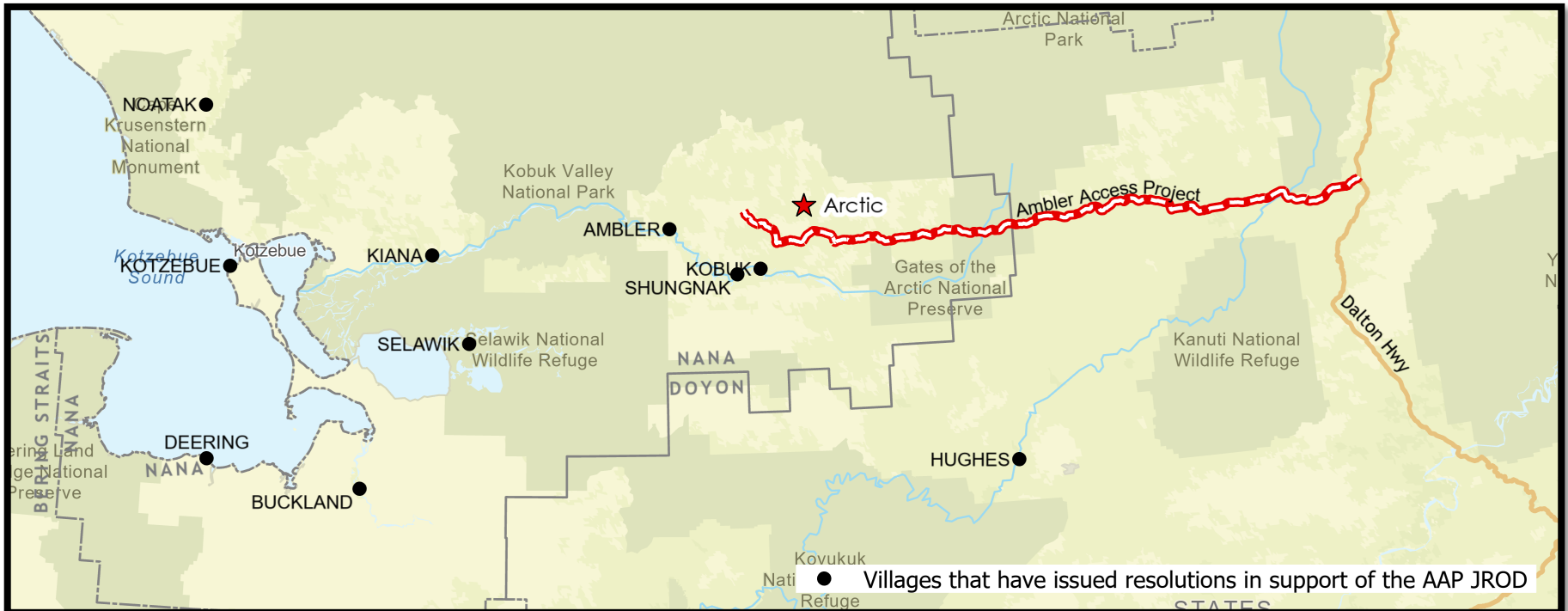


## THE 2022 FIELD SEASON

- BLM approved the 2021 Field (Cultural Survey) Report but stated substantial work still needed to complete the ethnographic resource inventory for the surveyed locations
- BLM approved the 2022 Annual Plan but with many restrictions e.g., no geotech work allowed during the remand
- BLM issued a letter dated May 27, 2022 further advising AIDEA of the ongoing requirements of the Programmatic Agreement (PA), including on nonfederal lands, and that undertaking any portion of the 2022 proposed work plan without approval would constitute a violation of the PA
- AIDEA response letter of Sept 15, 2022 stated that BLM's directions were inconsistent with its prior positions, are contrary to the PA and the Cultural Resources Management Plan (CRMP), and are unnecessary to protect potential cultural and historic resources
- Very limited AAP field work was conducted in 2022 as a result of BLM's delays and restrictions

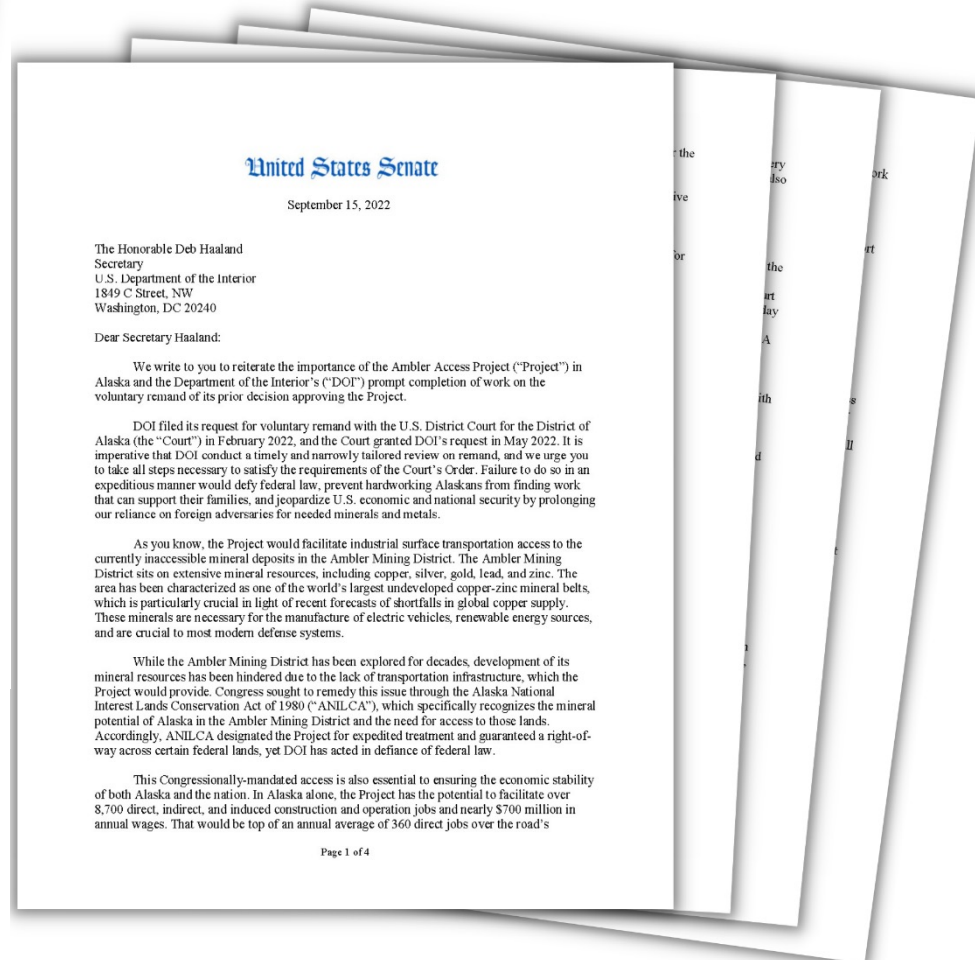
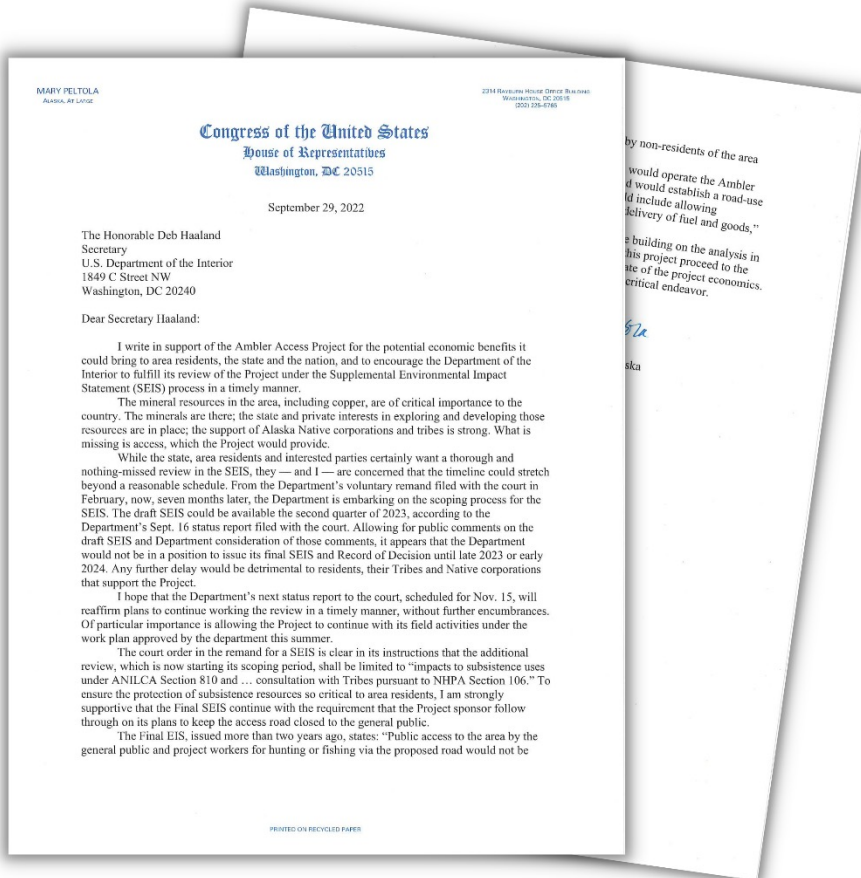
# AAP SUPPORT RESOLUTIONS

- Ambler
- Buckland
- Deering
- Hughes
- Kobuk
- Kotzebue
- Kiana
- Noatak
- Selawik
- Shungnak
- Northwest Arctic Borough Assembly
- Northwest Arctic Leadership Team (NWALT)





# SUPPORT FROM CONGRESSIONAL DELEGATION



*“It is abundantly clear to us that the JROD is well-supported, consistent with Congressional mandates in ANILCA, and President Biden’s stated goals for the development of a domestic supply of critical and strategic minerals.”*

- Senator Lisa Murkowski &  
Senator Dan Sullivan

*“The mineral resources in the area, including copper, are of critical importance to the country. The minerals are there; the state and private interests in exploring and developing those resources are in place; the support of the Alaska Native corporations and tribes is strong. What is missing is access, which the Project would provide.”*

- Representative Mary Sattler Peltola

- BLM intends to prepare a Supplemental Environmental Impact Statement for the Ambler Access Project.
- Scoping is 45-days in length.
- BLM requests that the public submit comments concerning the scope of the analysis, potential alternatives, and identification of relevant information and studies.
- Deadline to submit comment is November 4, 2022.

## How to comment:

Website: <https://eplanning.blm.gov/eplanning-ui/project/57323/510>.

Email: [BLM\\_AK\\_AKSO\\_AmblerRoad\\_Comments@blm.gov](mailto:BLM_AK_AKSO_AmblerRoad_Comments@blm.gov).

Fax: (907) 271-5479

Mail: Ambler Road Scoping Comments  
222 West 7th Avenue, Stop #13, Anchorage, Alaska 99513

More information can be found at [www.ambleraccess.org](http://www.ambleraccess.org)



**THANK YOU**

