



**Meet Alaska**



---

**Joe Bovee**

*Land & Resource Manager*

**Ahtna, Inc.**

# Ahtna, Incorporated

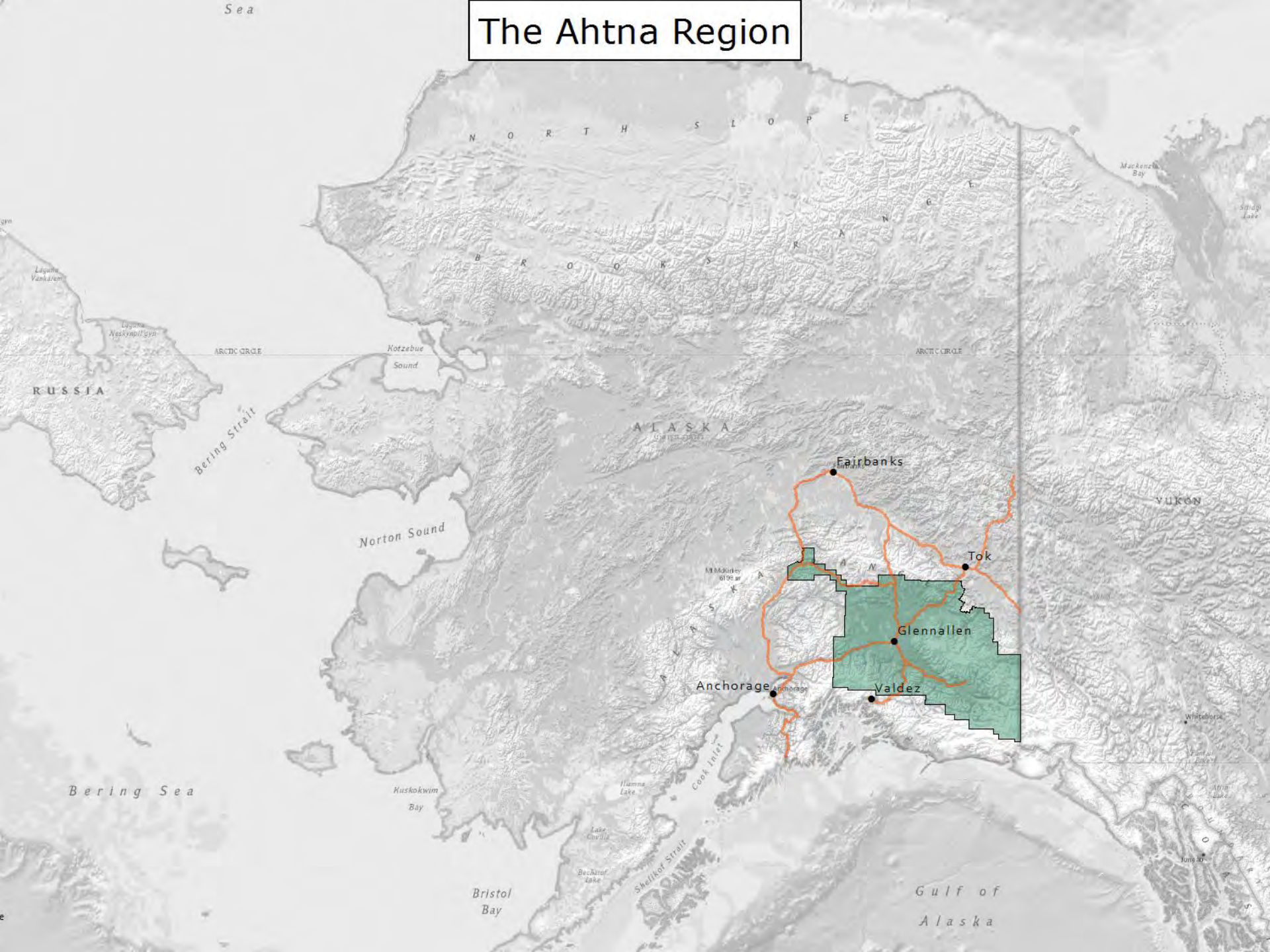


**Our Culture Unites Us;**

**Our Land Sustains Us;**

**Our People are Prosperous.**

# The Ahtna Region



Sea

# The Ahtna Region

N O R T H S L O P E

B R O O K S R A N G E

R U S S I A

Bering Strait

ARCTIC CIRCLE

ARCTIC CIRCLE

Norton Sound

A L A S K A

Fairbanks

YUKON

Tok

Glennallen

Anchorage

Valdez

Bering Sea

Kuskokwim Bay

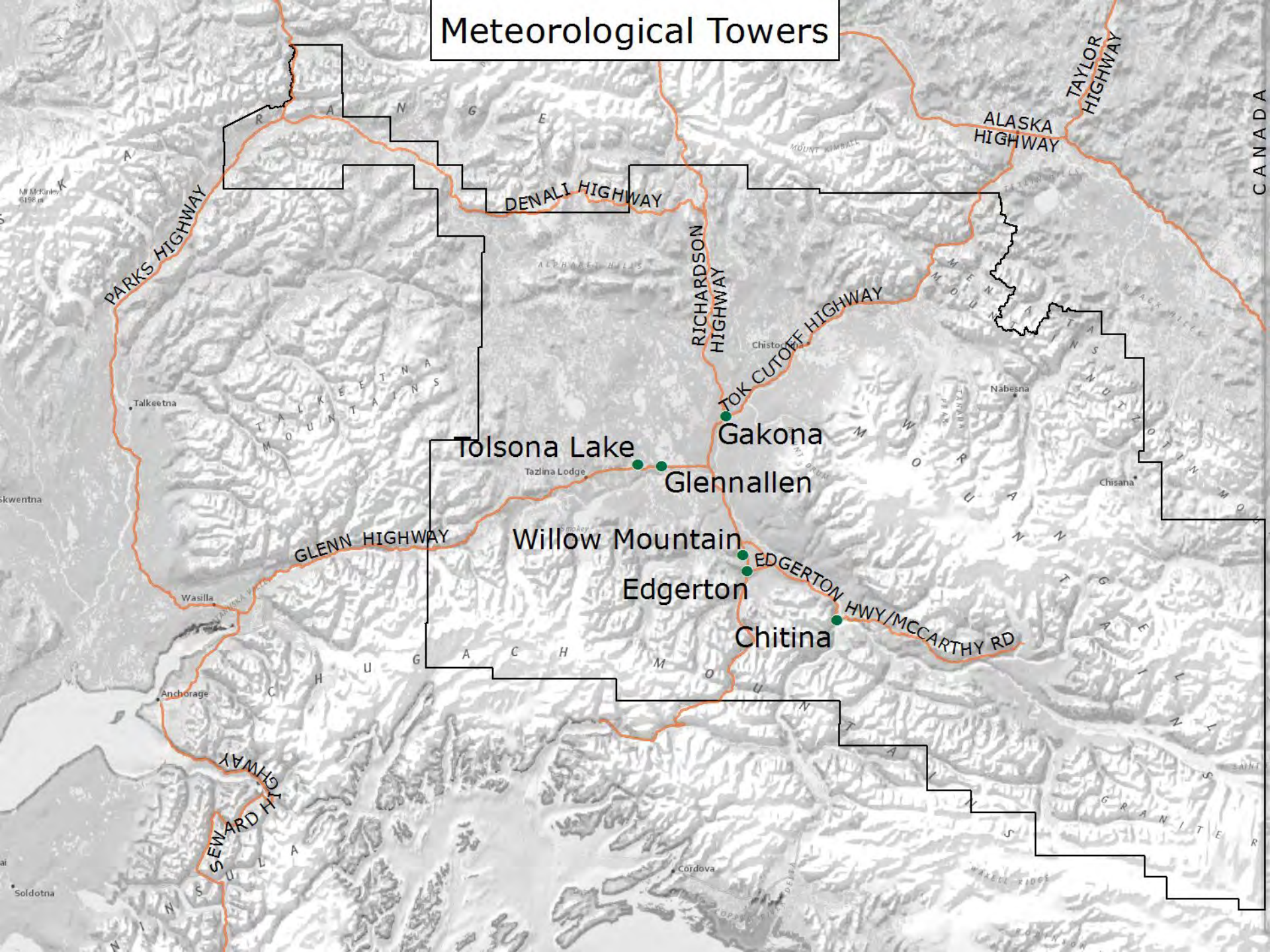
Bristol Bay

Gulf of Alaska

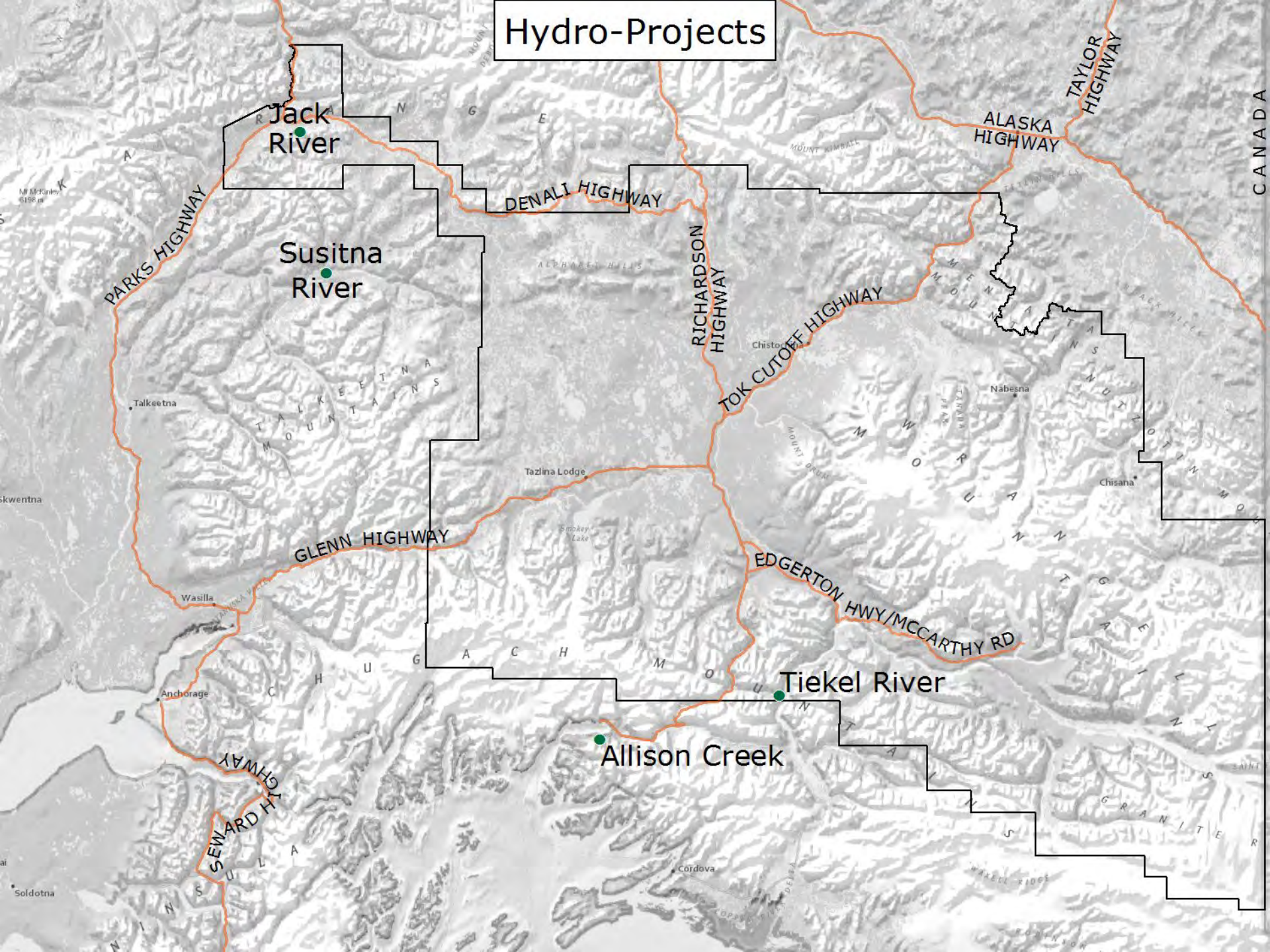
Shelikof Strait

Juneau

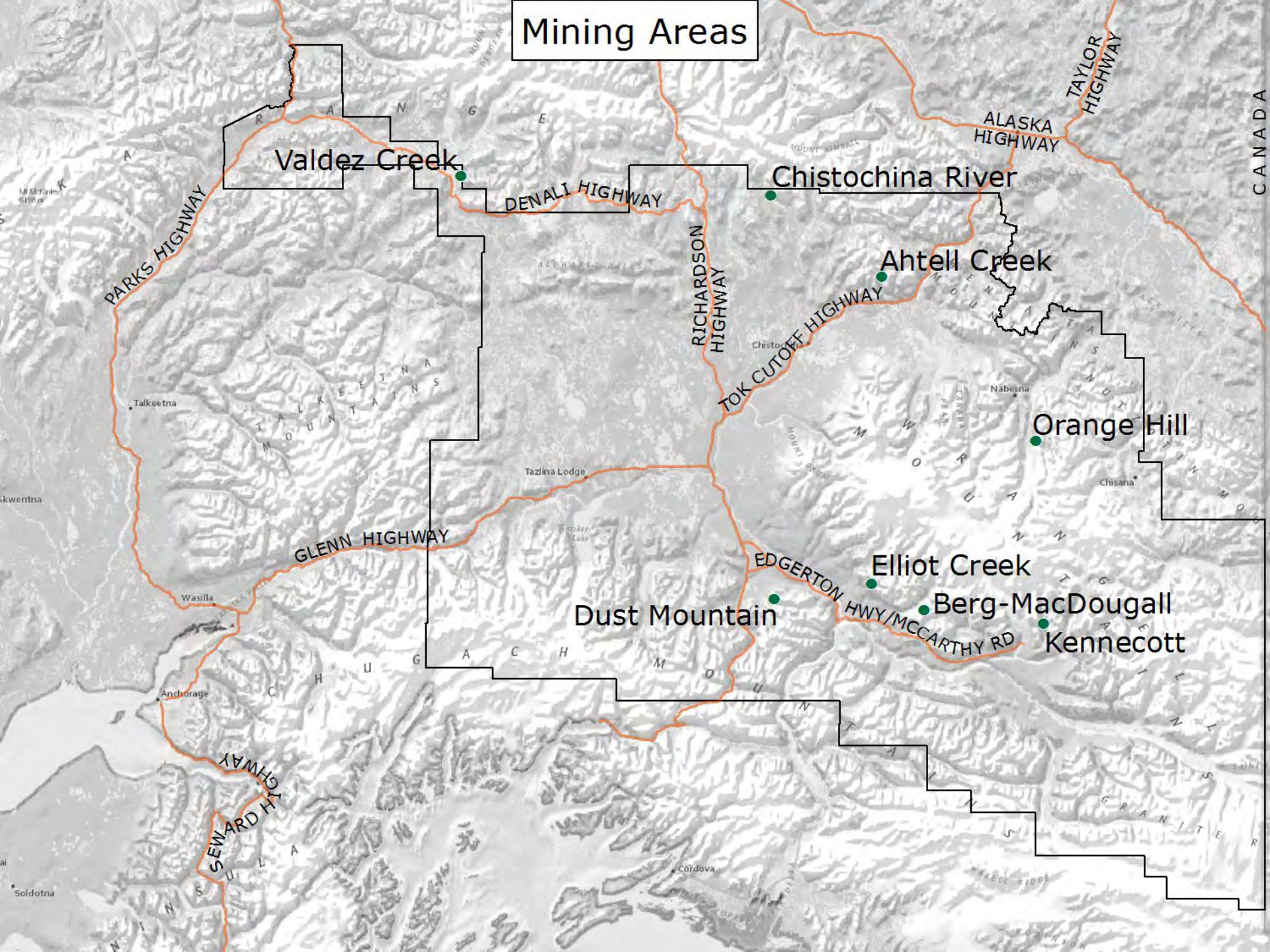
# Meteorological Towers



# Hydro-Projects



# Mining Areas



Valdez Creek

Chistochina River

Ahtell Creek

Orange Hill

Elliot Creek

Berg-MacDougall

Kennecott

Dust Mountain

PARKS HIGHWAY

DENALI HIGHWAY

RICHARDSON HIGHWAY

TOK CUTOFF HIGHWAY

GLENN HIGHWAY

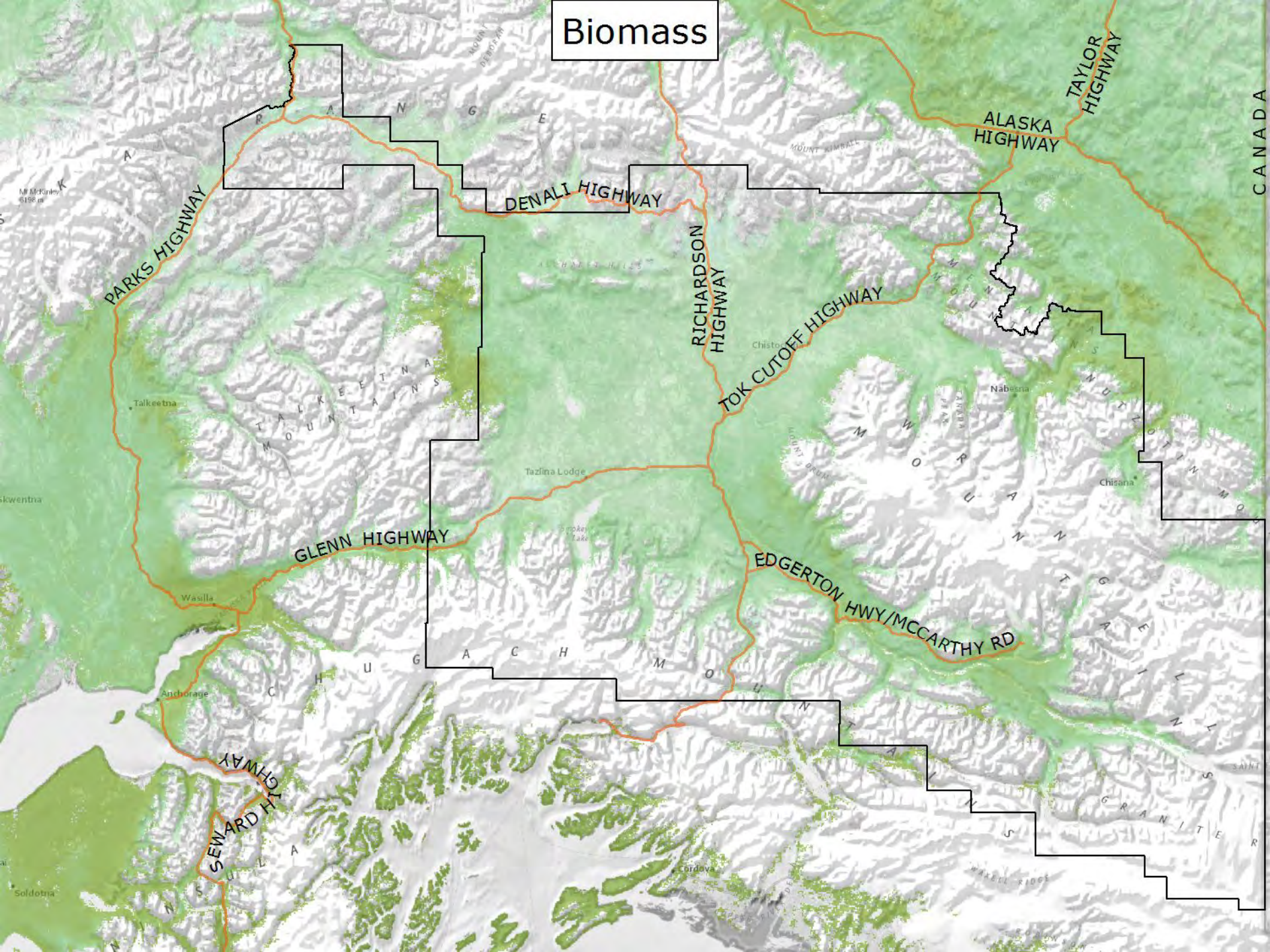
SEWARD HIGHWAY

ALASKA HIGHWAY

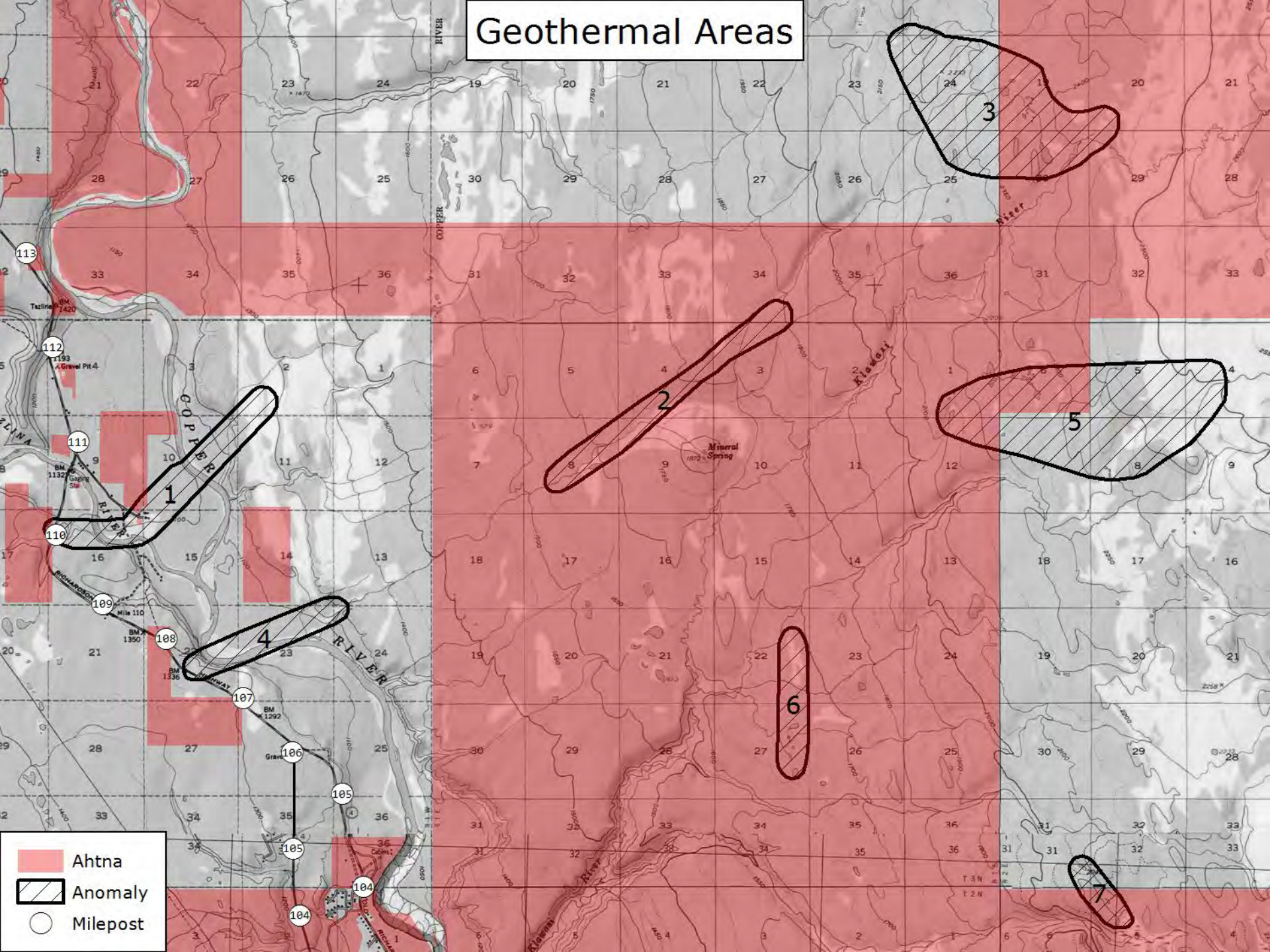
TAYLOR HIGHWAY


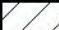

CANADA

# Biomass



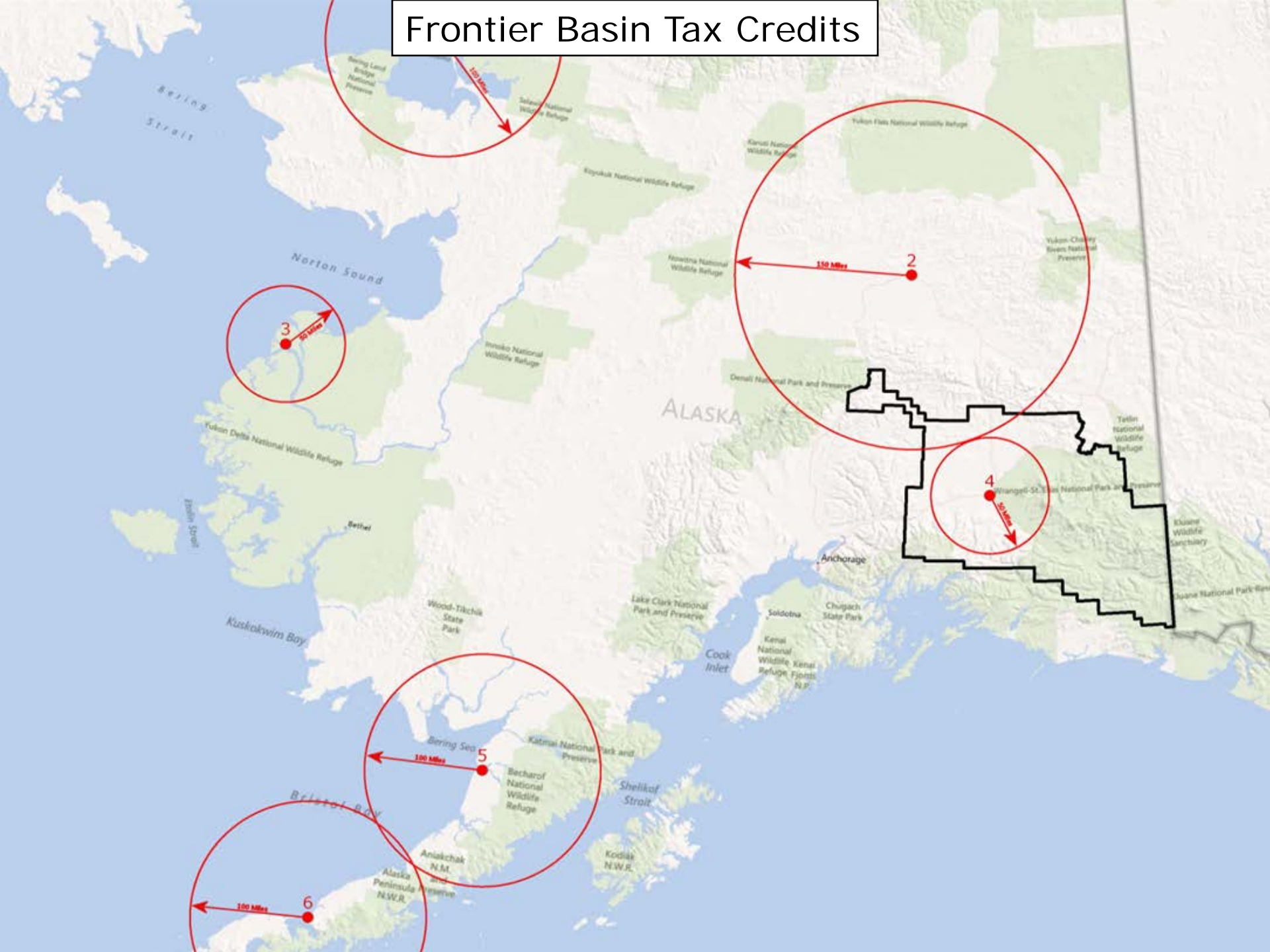
# Geothermal Areas



-  Ahtna
-  Anomaly
-  Milepost

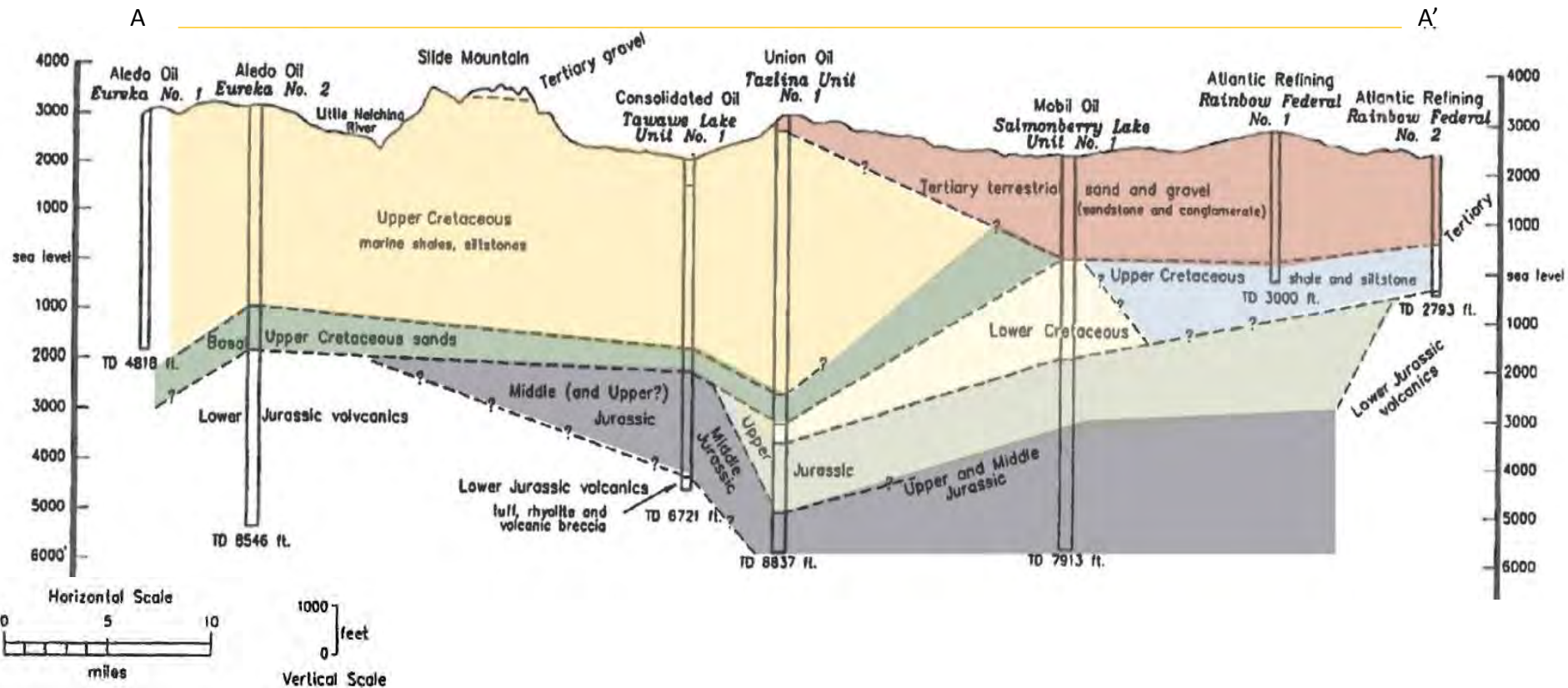


# Frontier Basin Tax Credits

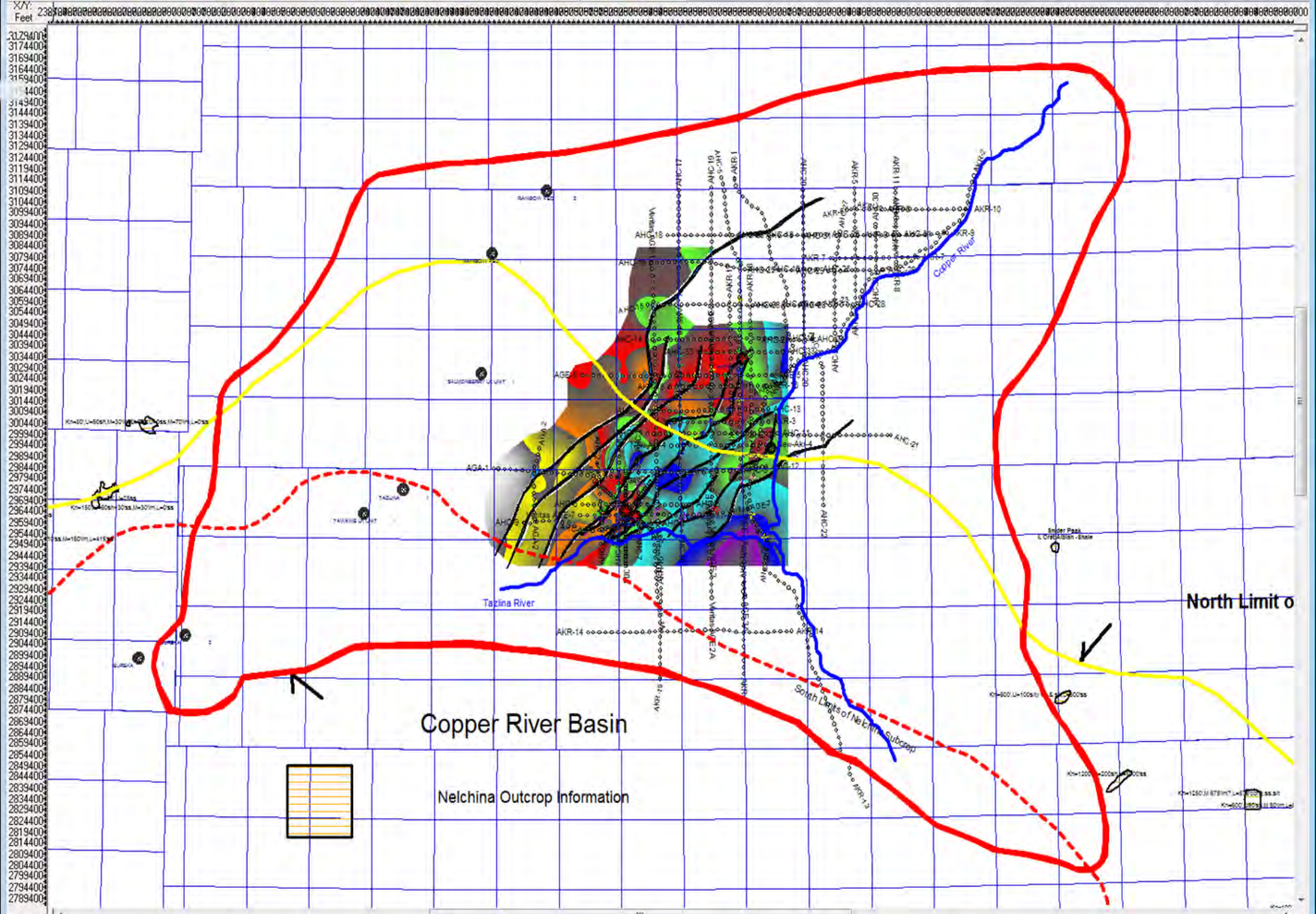


# Geological Summary

- Identified porous, permeable, and hydrocarbon-bearing lower Cretaceous
- Several large fault-bounded geologic structures, may hold economic accumulations of natural gas
- High pressure water zone found identified at 1,100' with pressure of 1,000 PSI



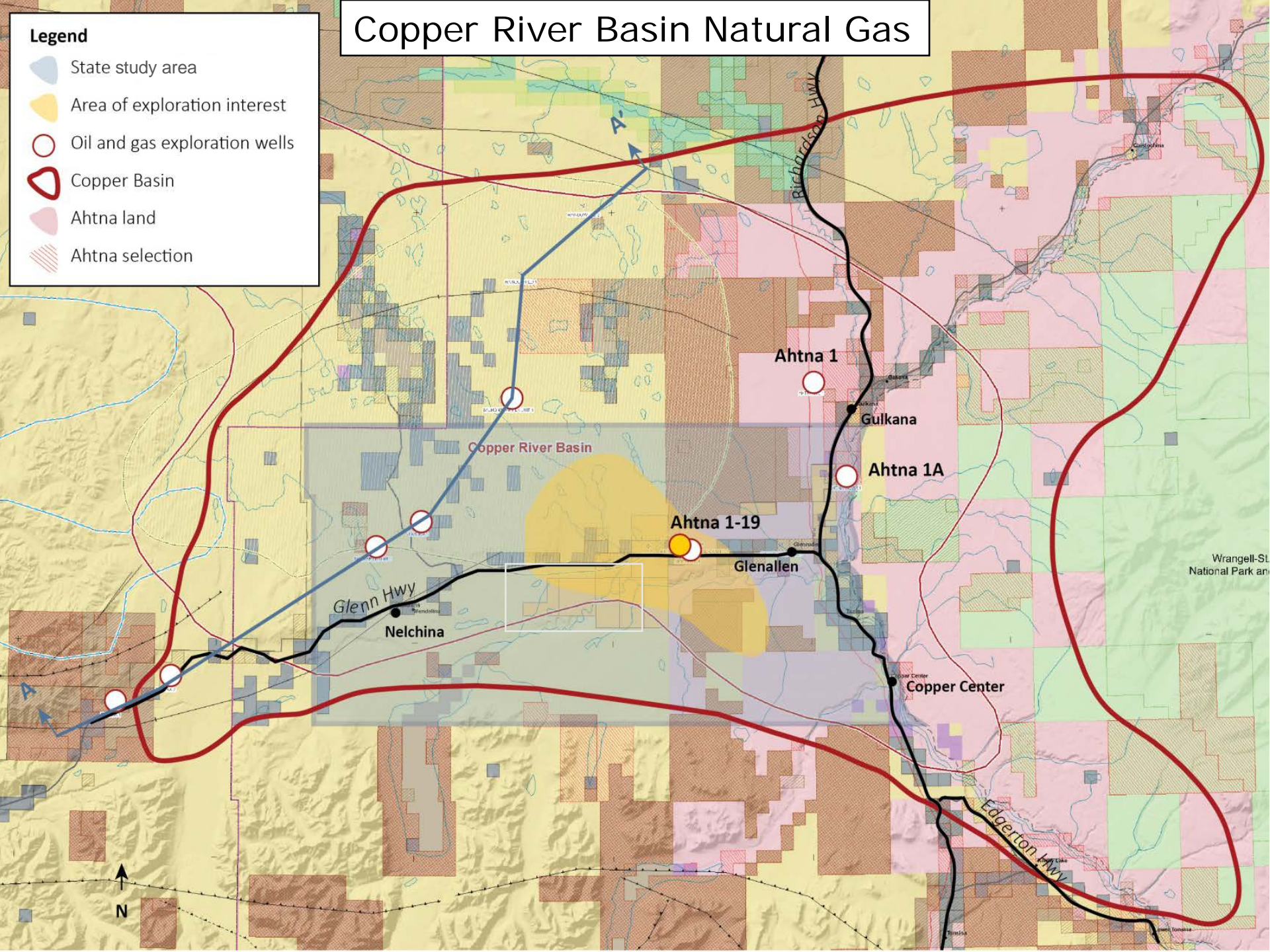




# Copper River Basin Natural Gas

**Legend**

- State study area
- Area of exploration interest
- Oil and gas exploration wells
- Copper Basin
- Ahtna land
- Ahtna selection



## Looking Forward

- Middle Earth Frontier Basin Tax Credits
- SB21
- SB23
- 2014 Reprocess 80 Miles 2D seismic
  - 15-30 Miles New Seismic
  - Identify Target Well Location
- 2015 – 2016 New Well
- Plan B – Import LNG for Local Distribution
- Preparing a RCA-Certificate of Public Necessity and Need
- Primary Focus is to Lower Utility Costs for Local Consumers**



**Meet Alaska**



---

**Joe Bovee**

*Land & Resource Manager*

**Ahtna, Inc.**