



**Meet Alaska**

---

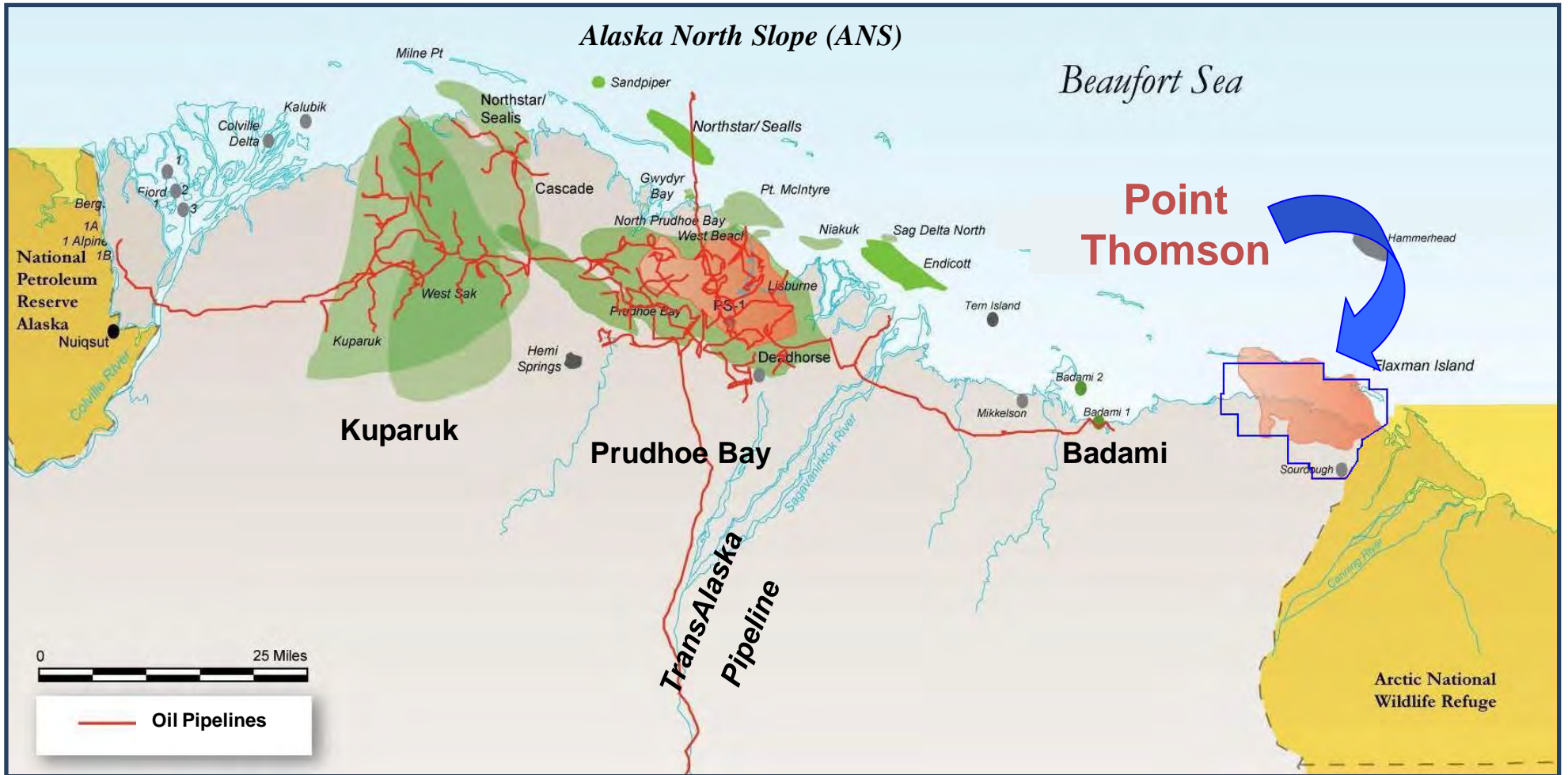


**Gina Dickerson**  
*Senior Project Manager,*  
*Point Thomson*  
**ExxonMobil**



Gina Dickerson | Meet Alaska | January 2014

# Point Thomson Project | Update



- Discovered in 1977
- 60 miles east of Prudhoe Bay and TransAlaska Pipeline
- Point Thomson Unit covers ~150 square miles
- Located in remote and environmentally sensitive area
- Thomson Sand reservoir contains an estimated 8 trillion cubic feet (TCF) of gas and 200 million barrels of condensate (~25% of known North Slope gas resource)

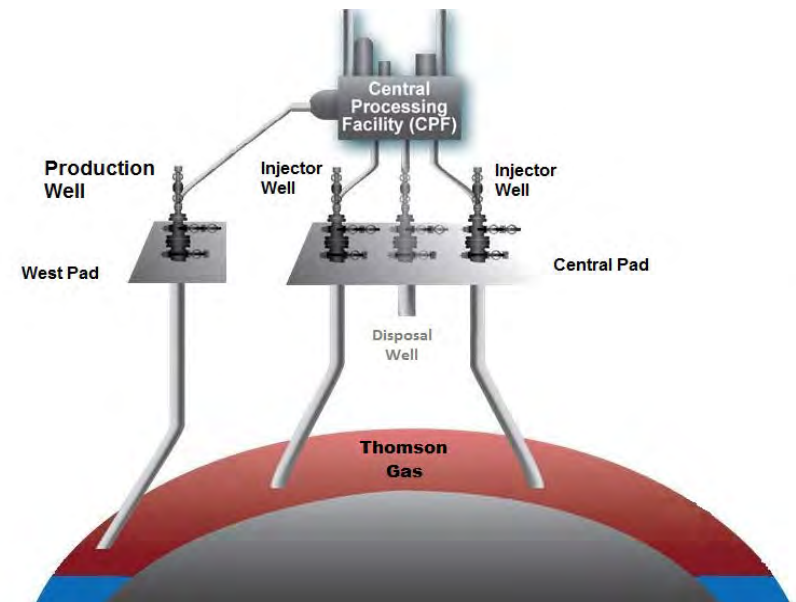
# Point Thomson Initial Production Facility

## Scope

- Produce up to 10,000 BPD of condensate into TransAlaska Pipeline System
- Support pipeline extension, with a capacity of 70,000 BPD
- Establish critical infrastructure (roads, gravel pads, pier, camp, airstrip, gas processing plant)

## Process

- Capacity to cycle 200 million cubic feet of natural gas per day
- One production well and two injection wells
- Directional drilling minimizes environmental footprint

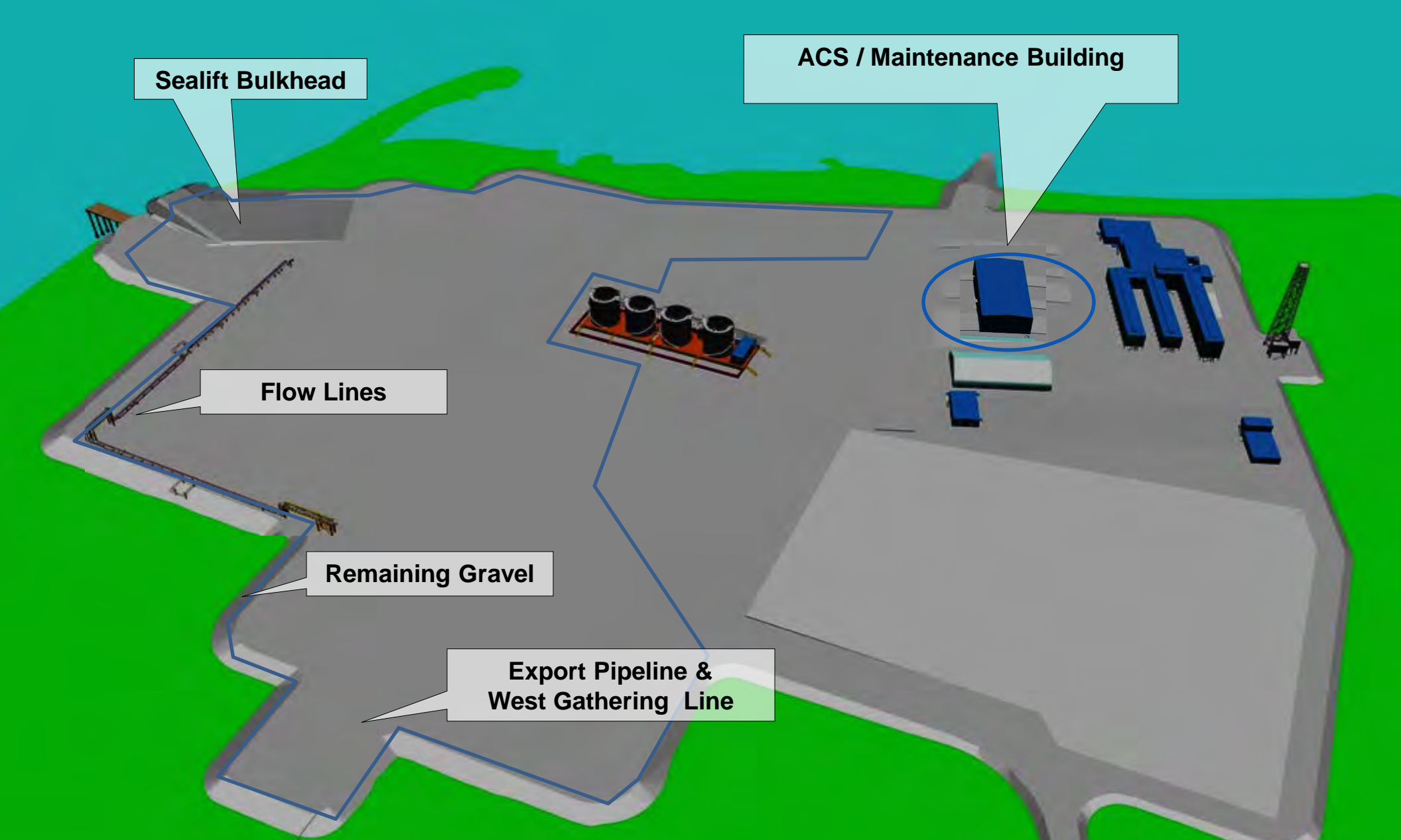




Infrastructure Investment, October 2013



# POINT THE PROJECT



**Sealift Bulkhead**

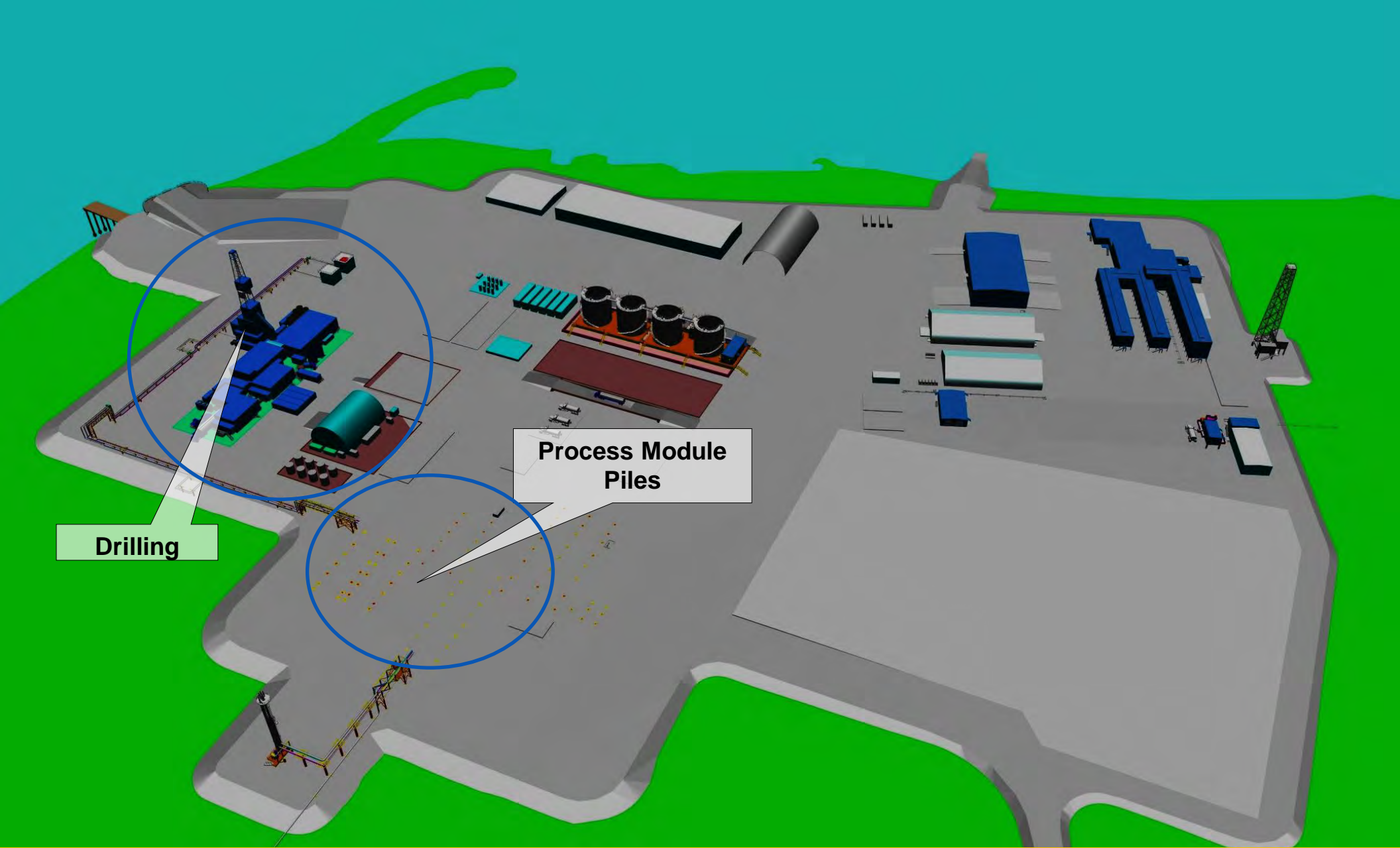
**ACS / Maintenance Building**

**Flow Lines**

**Remaining Gravel**

**Export Pipeline &  
West Gathering Line**

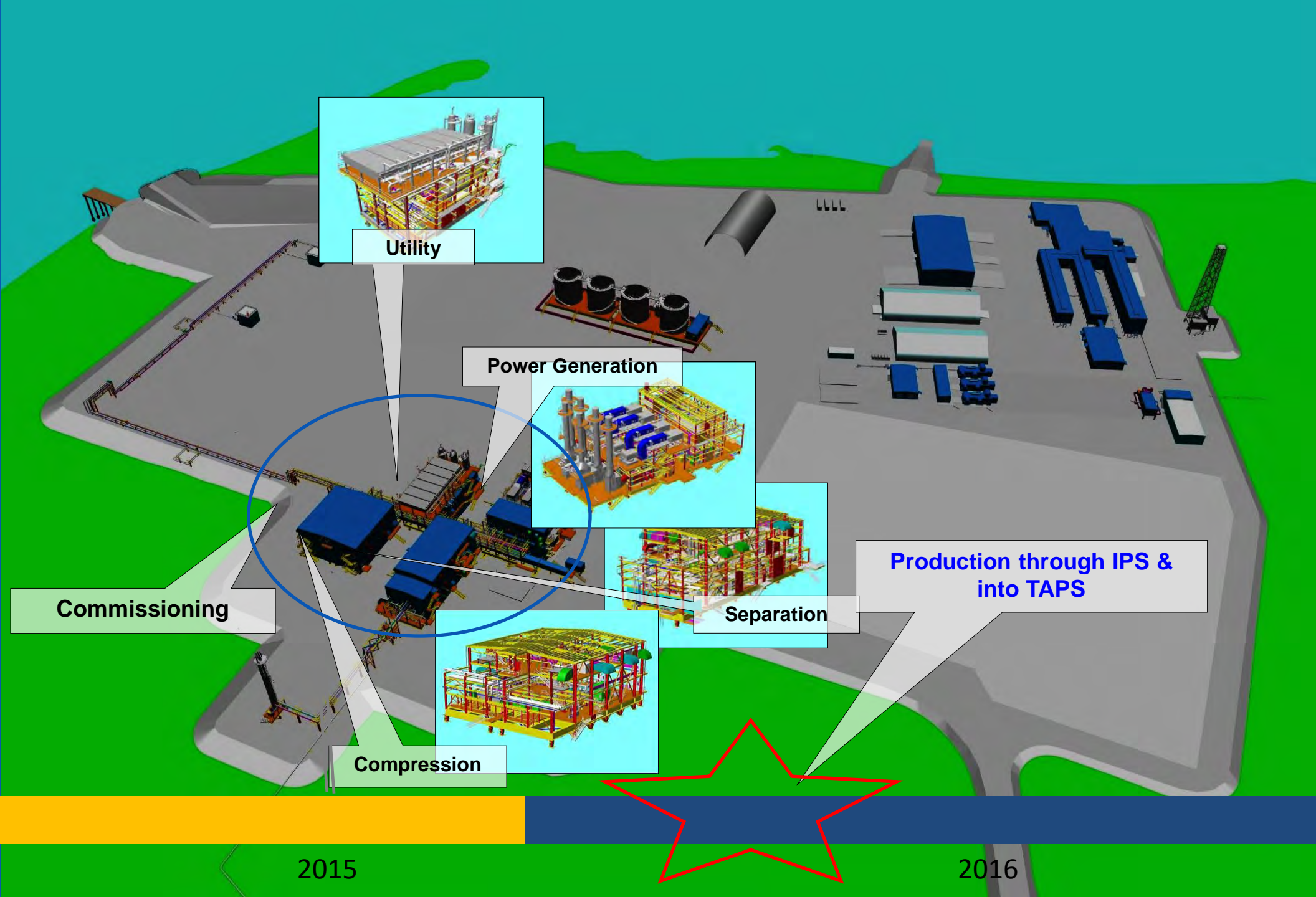
**2014**



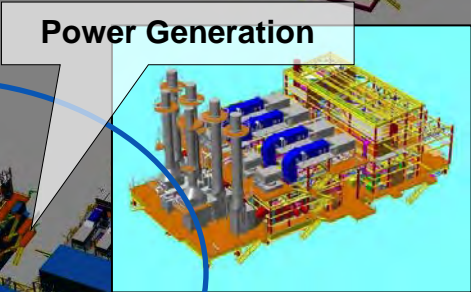
Process Module  
Piles

Drilling





**Utility**



**Power Generation**



**Separation**



**Compression**

**Commissioning**

**Production through IPS & into TAPS**

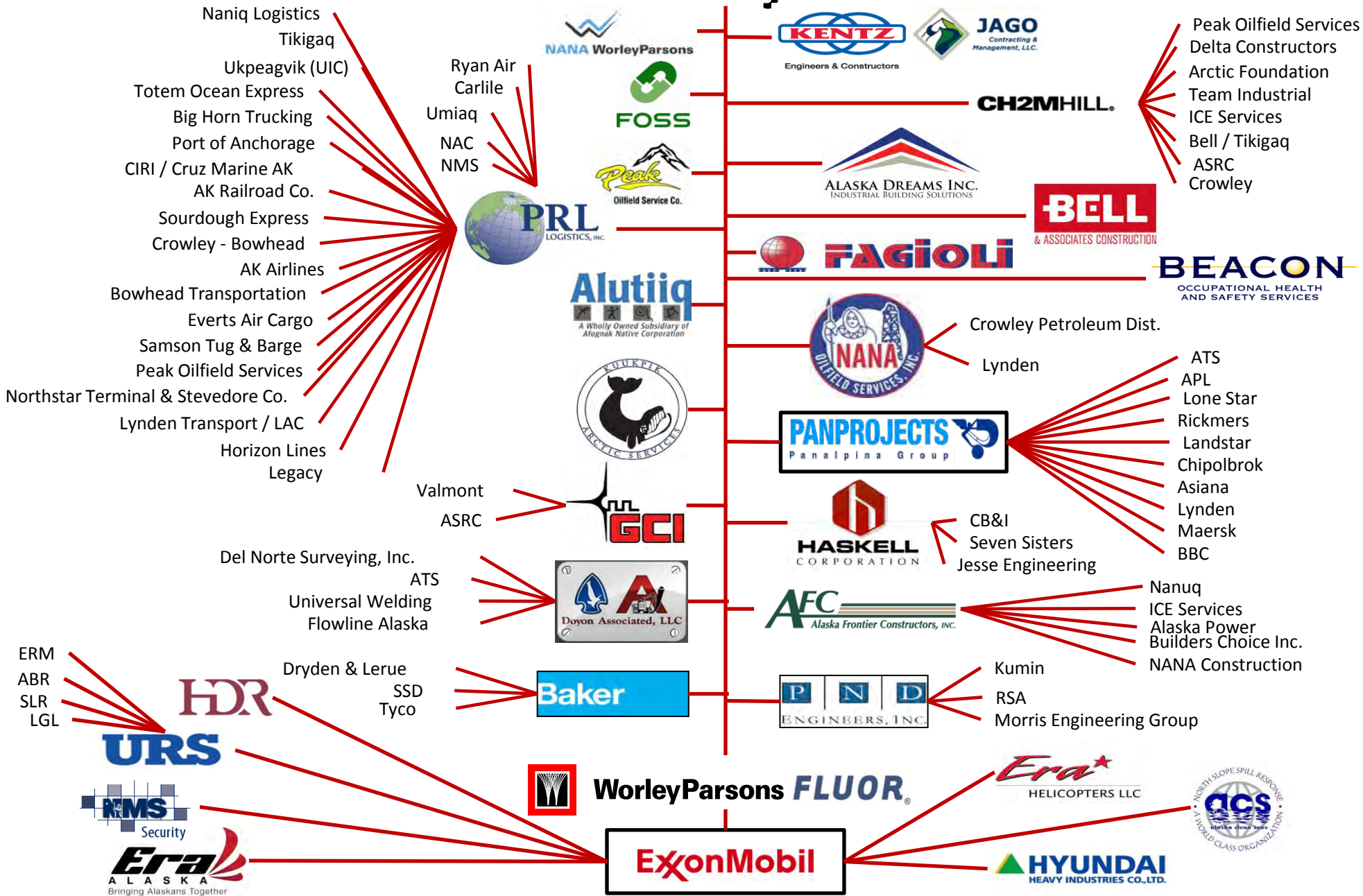


2015

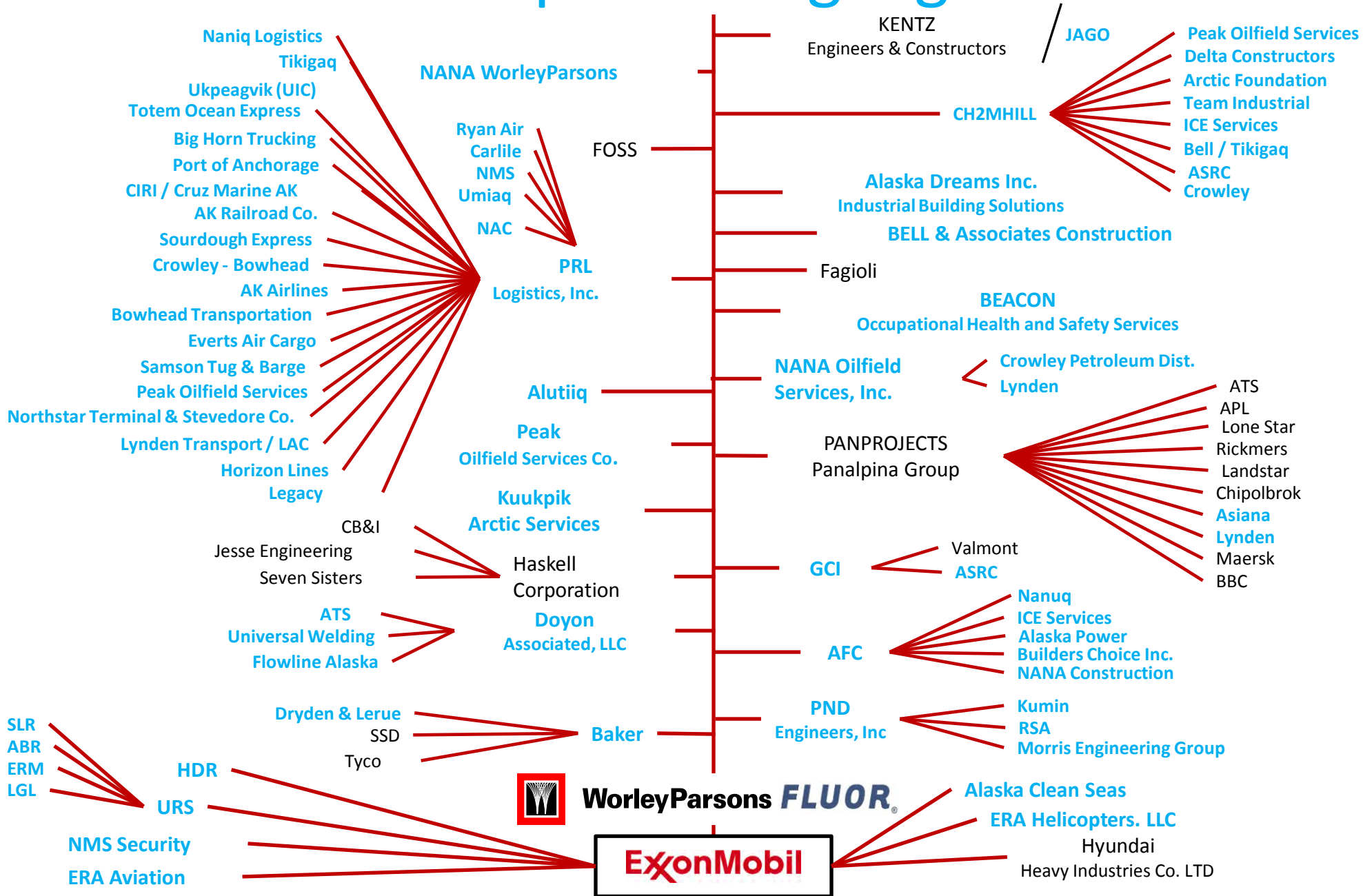


2016

# Point Thomson Project Contractors



# AK Companies Highlighted





**Doyon Associated**  
Fairbanks  
Design and Execution of Pipeline



**Pacific Rim Logistics**  
Anchorage  
Flow of Material and Personnel

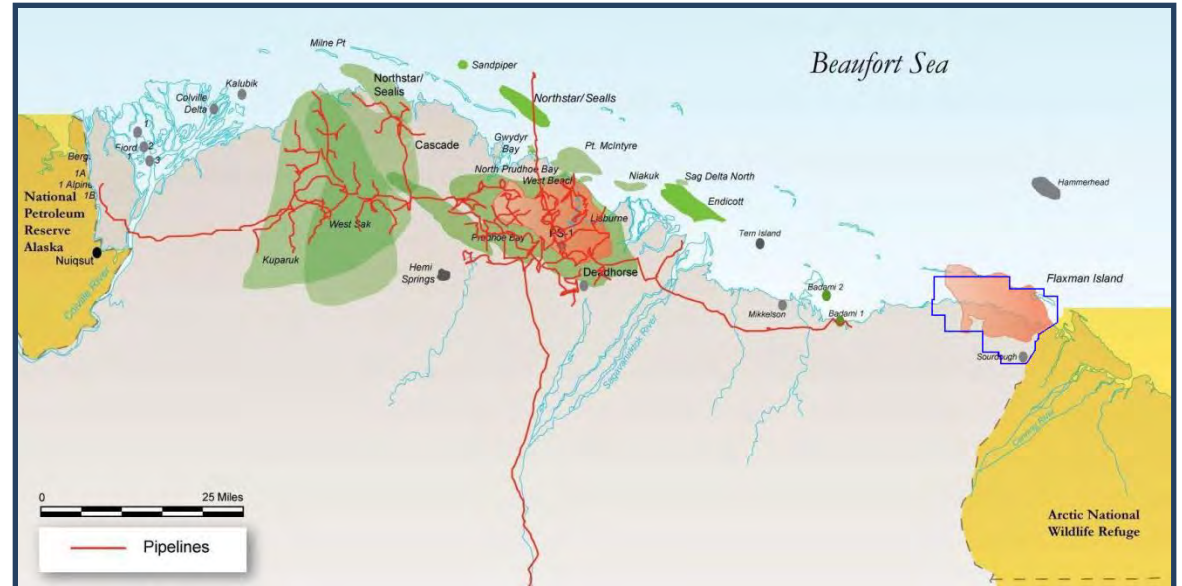


**Morris Engineering**  
Juneau  
Airstrip Design



**Builder's Choice Incorporated**  
MatSu Valley  
Construction of Permanent Camp

# Point Thomson is integral to the Alaska LNG Project.





**Meet Alaska**

---



**Gina Dickerson**  
*Senior Project Manager,*  
*Point Thomson*  
**ExxonMobil**