



Fighting Federal Overreach

Jason Brune, Commissioner

Alaska Department of Environmental Conservation

March 18, 2022 presentation to The Alliance

“Federal Overreach” during World War II



- ALCAN Constructed in 8 months by 11,000 soldiers
- Usibelli Coal Mine started to provide fuel diversification to Fort Wainwright



Time for more “Federal Overreach?”



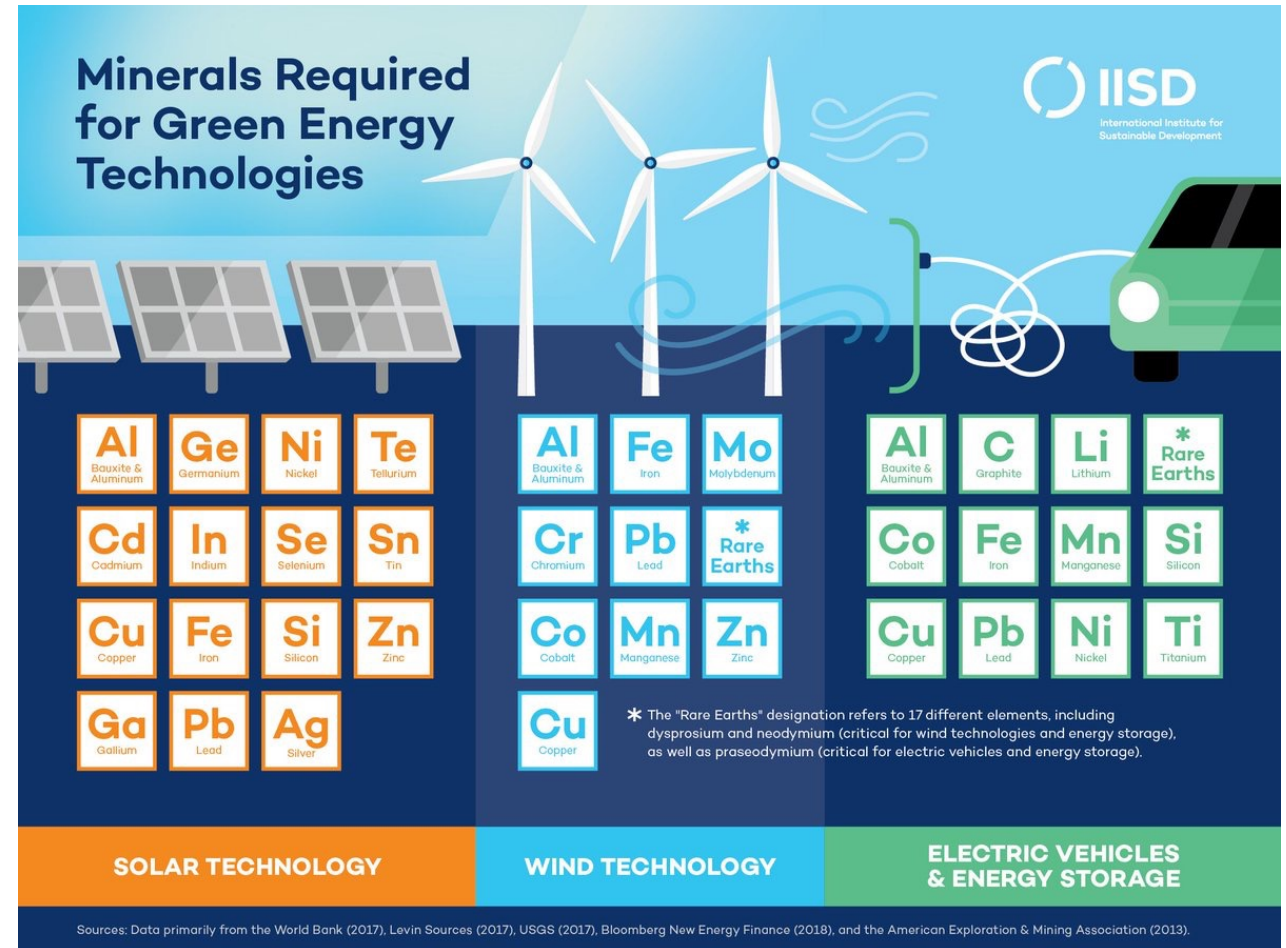
Federal Overreach by the Biden Administration in Alaska

- Suspended oil and gas leases in ANWR
- Reverted management of the NPR-A to the 2013
- Reinstating the Roadless Rule in the Tongass National Forest
- Revised definition of WOTUS
- 30x30
- Supplemental EIS for Willow
- Suspension of Ambler Road remanding the Record of Decision for “Deficiencies”



Wind Turbines

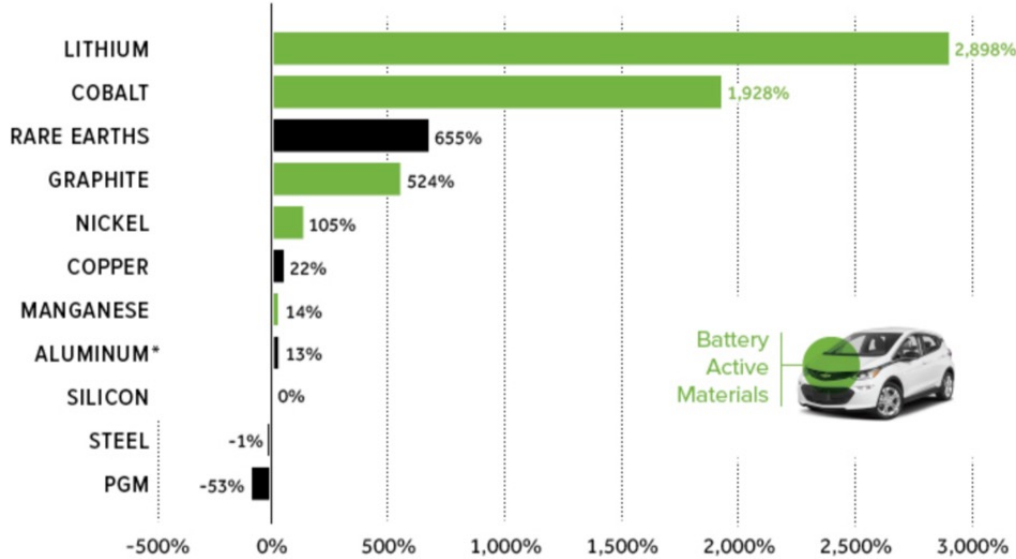
- Steel (66-79% of total turbine mass)
- fiberglass, resin or plastic (11-16%)
- iron or cast iron (5-17%)
- copper (1%)
- Aluminum (0-2%)



Electric Vehicles

INCREMENTAL COMMODITY DEMAND IN A 100% EV WORLD

Percentage of today's global production

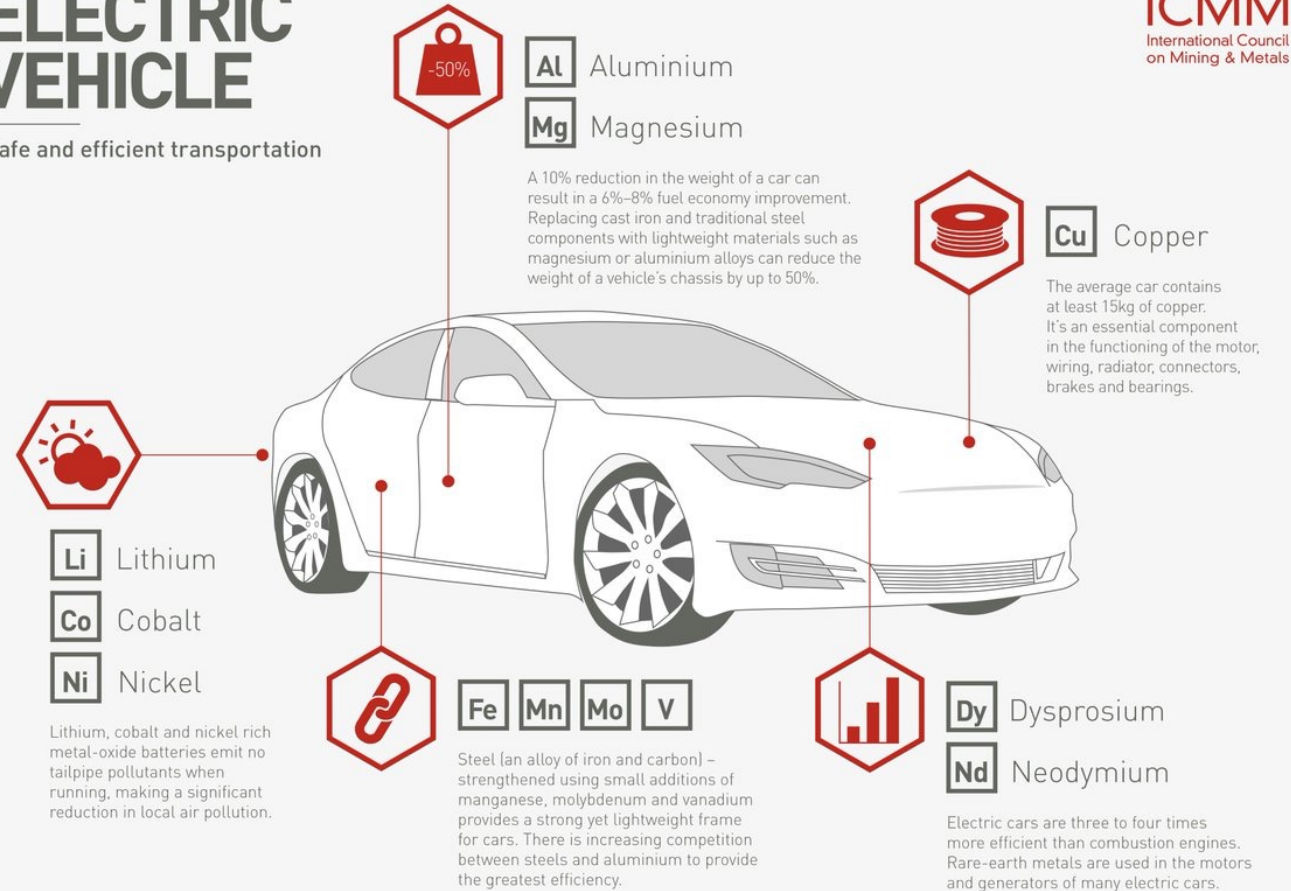


*Small amounts of aluminum are used in NCA batteries, but this change in demand stems mostly from replacing steel in the body.

ELECTRIC VEHICLE

Safe and efficient transportation

ICMM
International Council
on Mining & Metals

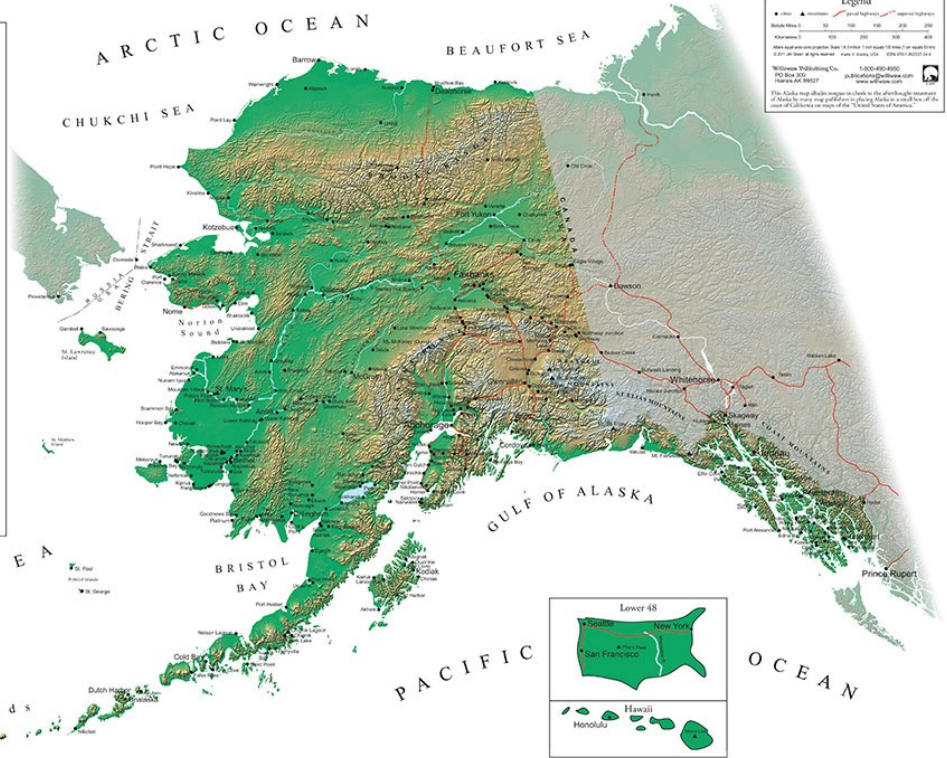


#TGDL

The United States of America

Selected Facts	Alaska	lower 49
geography		
land area (square miles)	616,240	3,102,454
ocean area ¹ (square miles)	1,455,613	1,901,178
coastline (miles)	33,994	54,729
glaciated area (sq. mi.)	28,958	366
islowater glaciers	51	0
peaks higher than 15,000 feet	10	0
historically active volcanoes	53	13
islands larger than 600 square miles	15	4
climate		
hottest ever recorded (°F)	100 Fairbanks	134 Death Valley, CA
coldest ever recorded (°F)	-80 Prudhoe Bay	-70 Rogers Pass, MT
warmest yearly average (°F)	45.9 Metlakatla	78.1 Key West, FL
coldest yearly average (°F)	18.1 Barrow	37.4 International Falls, MN
wettest average (inches per year)	226.24 Iliamna Park Wales	379.02 Mt. Washita, HI
driest average (inches per year)	3.96 Ketchikan	3.01 Yuma, AZ
snowiest city ² (inches per year)	326.3 Valdez	516.1 Sleds 19
windiest city ² (yearly average mph)	19.1 Gustaf	13.9 Dodge City, KS
average tornadoes per year	<1	1,300
biology		
grizzly bears	30,000	1,300
bald eagles	60,000	25,000
forested area (square miles)	199,063	824,063
species of poisonous snakes	0	4
demographics		
population	710,231	308,035,507
population density (per square mile)	1.2	99.3
cities over 100,000	1	274
cities over 5,000	11	4,555
miles per 100 females	102.5	96.7
<18 years old-64 years old (percent)	2678	24713
indigenous people (percent)	15	1
Indian reservations	1	309
US representatives	1	434
infrastructure		
roads (miles)	15,328	4,027,440
railroads (miles)	518	139,175
airports (per 100,000 population)	72	4
rocket launching facilities	2	10
federal lands (percent)	60	19
crop lands (percent)	0.2	18.0
education/lifestyle		
colleges/universities	7	7,000+
adults with college degree (percent)	26.5	24.4
licensed pilots (percent)	1.3	0.2
boat owners (percent)	7.5	4.3
workers with <10 minute commute (percent)	26	14

¹ area from the coast out 200 miles, known as the Territorial Economic Zone
² city defined as populated place with a city-ward



Legend

● city
▲ airport
— major highway
— railroad
— water highway

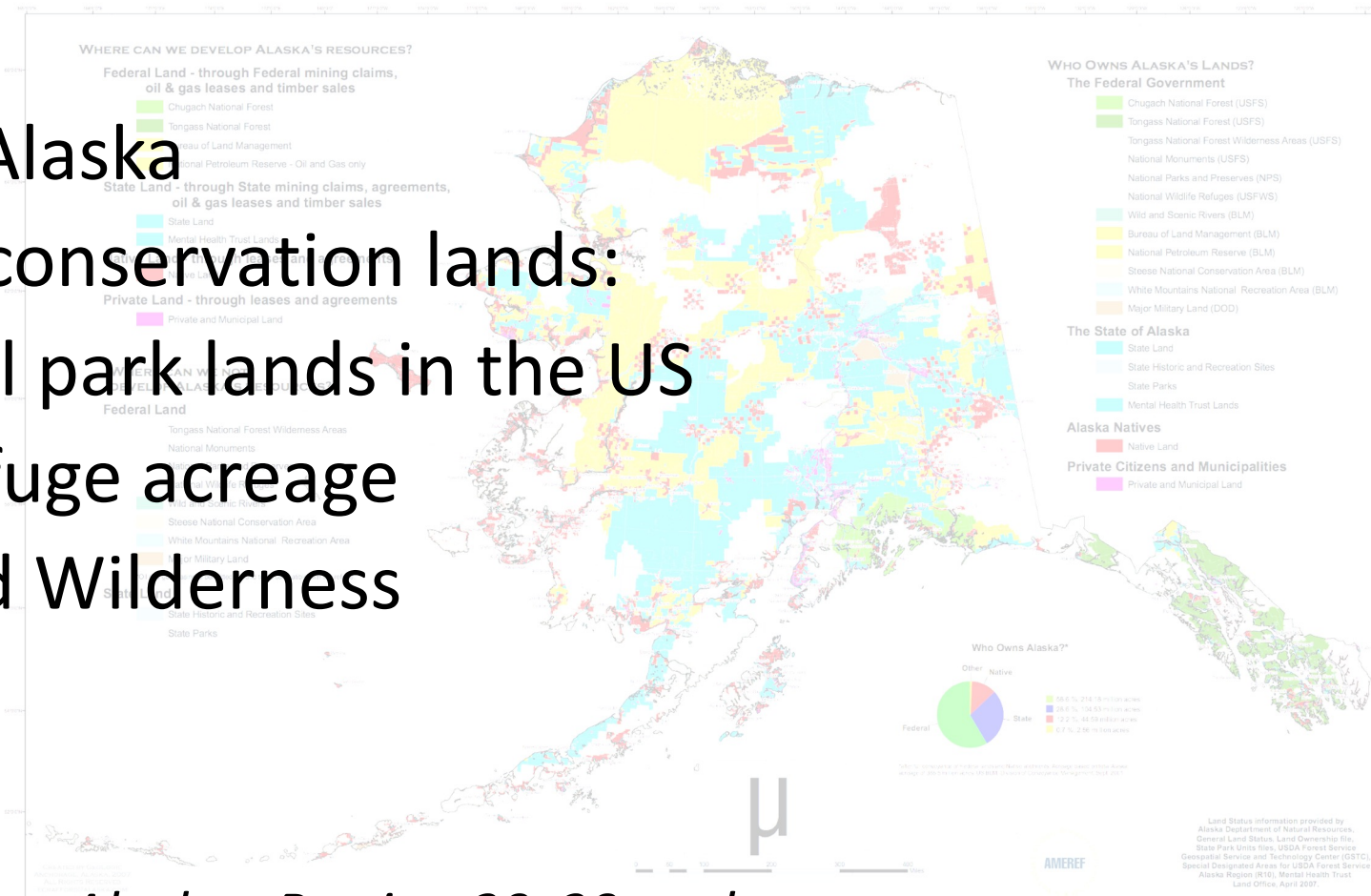
Scale Miles 0 50 100 150 200 250
 Kilometers 0 50 100 150 200 250

Alaska map and graphics from 1996 to 1997. All rights reserved. © 1996-1997. All rights reserved.
 1-800-455-4500
 170 Park Street
 Boston, MA 02107
 publications@deftone.com
 www.deftone.com

This Alaska map (Alaska map) is based on the authoritative information of Alaska by many map publishers in Alaska. It is a result of the work of different map publishers.

Conservation of Lands in Alaska

- 365 million acres in Alaska
- 148 million acres of conservation lands:
 - 70% of all national park lands in the US
 - 80% of wildlife refuge acreage
 - 53% of designated Wilderness



Alaska: Putting 30x30 to shame

Why can't we get a little federal overreach here? Contaminated Sites on ANCSA Lands

Contaminated Sites ownership

