

Alaska Support Industry Alliance



February 28, 2013

Kurt Parkan, External Affairs Manager

Location



Donlin Gold Project Area

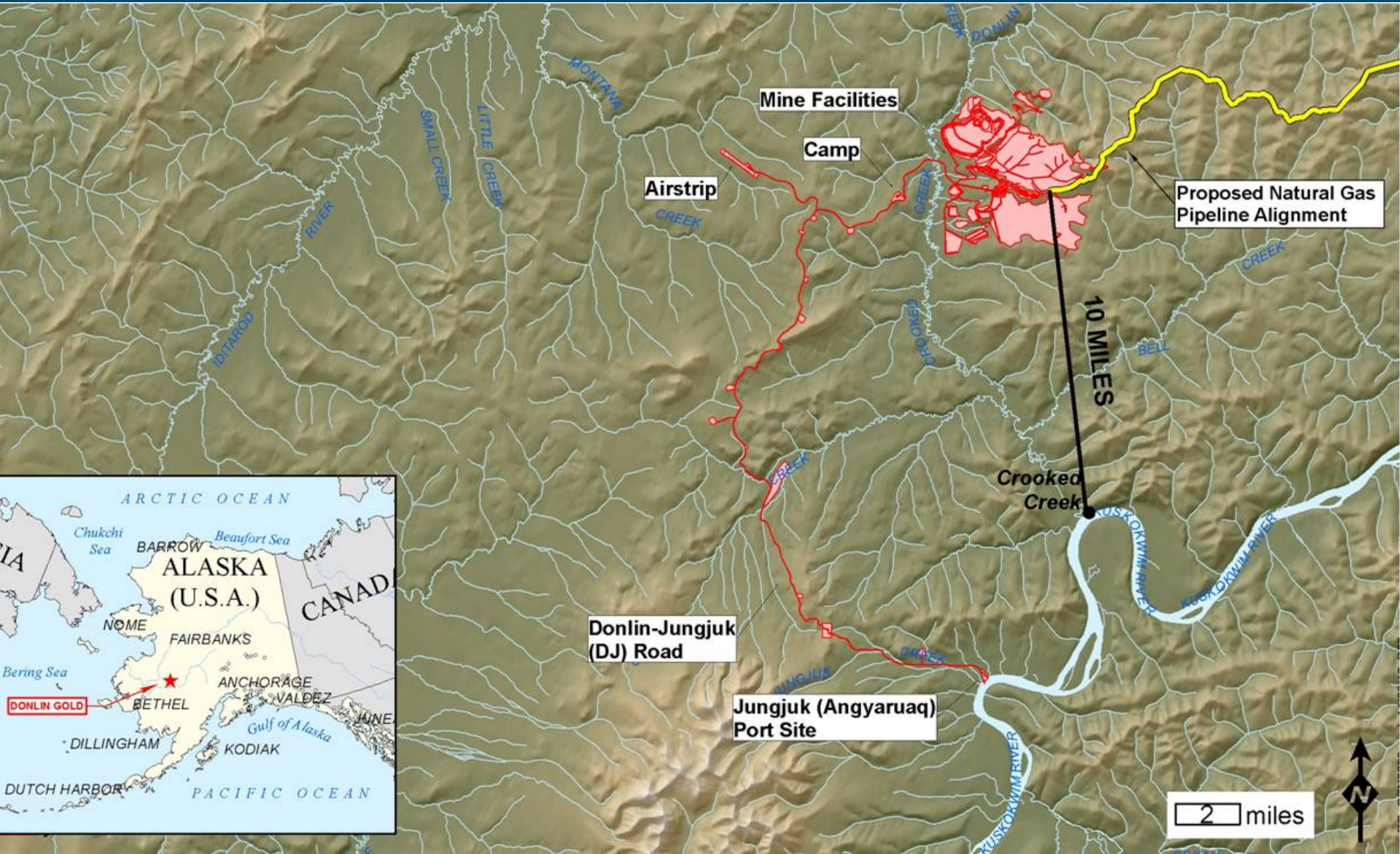
Natural Gas Pipeline

Anchorage

Bethel



Project Location



10 MILES

2 miles



Donlin Gold Project



- 50/50 partnership with Barrick Gold and NOVAGOLD
- Resource on lands owned by Calista Corp. and The Kuskokwim Corp. (TKC)
 - lease agreement with Calista
 - Surface use agreement with TKC
- Project studies ongoing since 1995
 - Resource definition
 - Engineering studies
 - Environmental baseline data collection

Project Overview



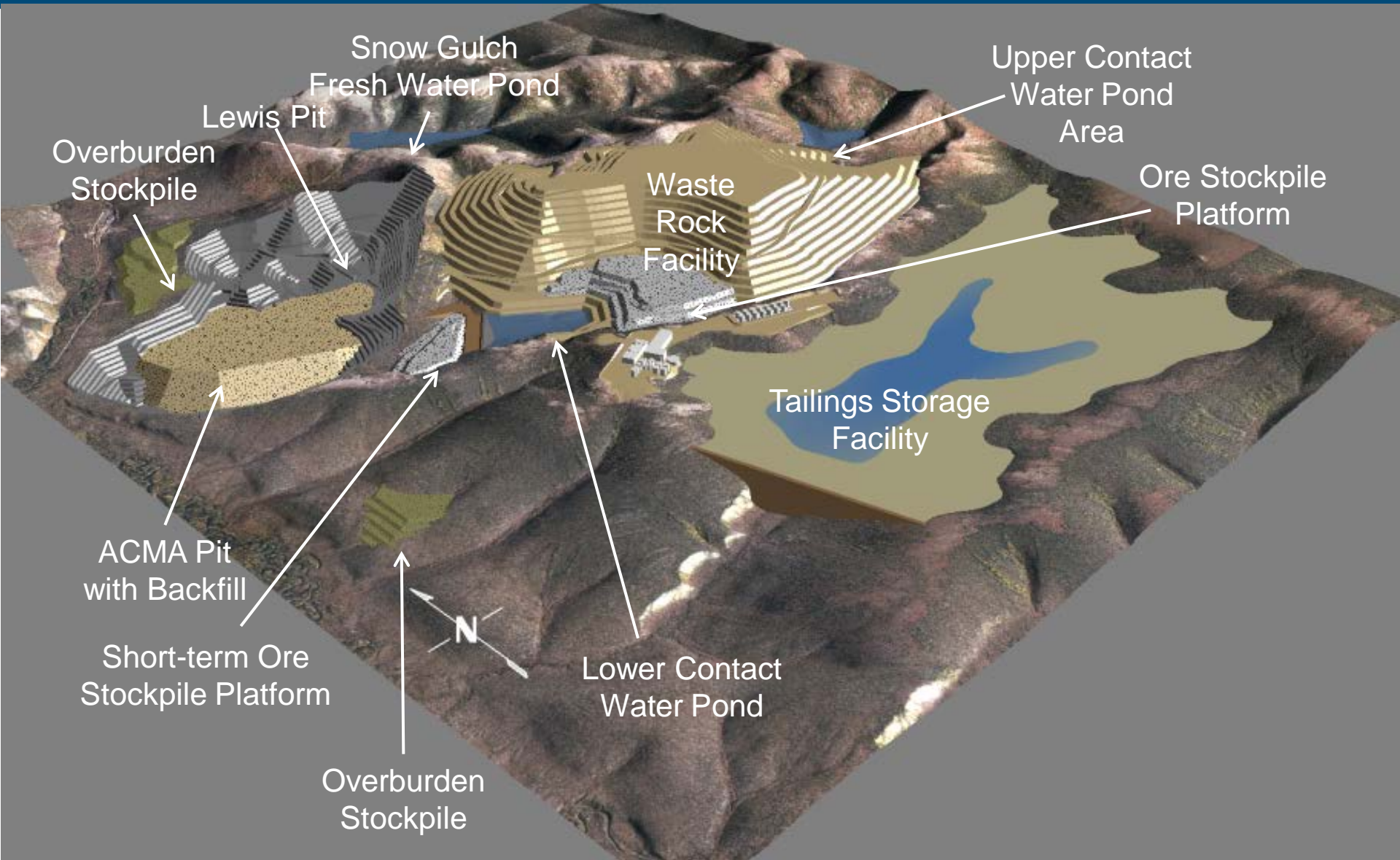
- **Reserves:** 33.9 M oz of gold
- **Mine Life:** ~27+ years
- **Production:** ~ 1.1 M oz/year
- **Operation:** Open-pit
- **Milling:** 59,000 tons/day, sulfide flotation, pressure oxidation, Carbon-in-Leach; recovery range 87.4- 94.17%
- **Strip ratio:** ~5.5:1 = ~3B tons waste rock
- **Gold grade:** Gold grade 2.09 grams/ metric tonne (.061 oz/short ton)

Project Overview

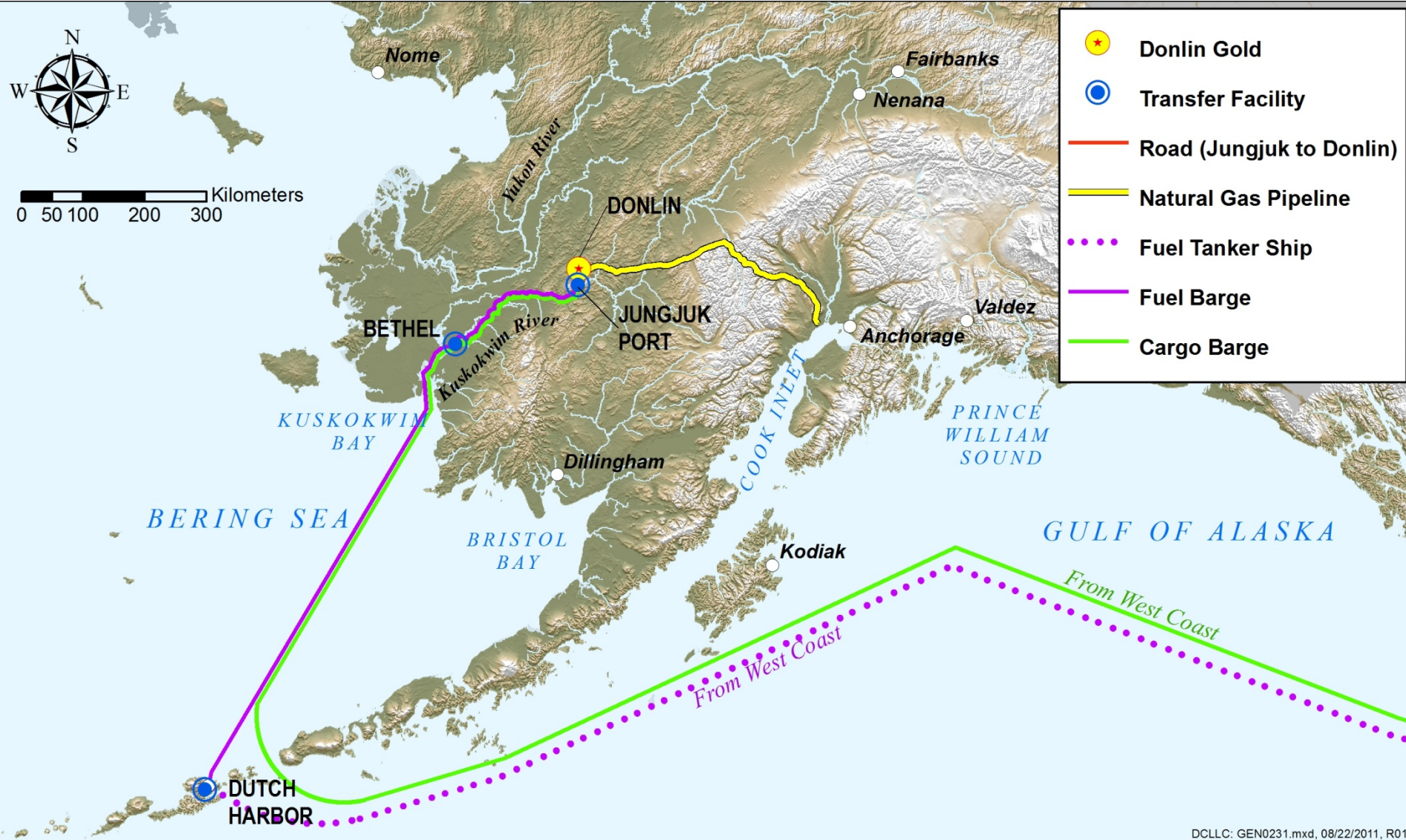


- **Tailings:** Fully lined storage facility
- **Infrastructure:** 5,000 ft runway
Camp for 600 employees
- **Equipment:** 69 haul trucks (400 ton/ea)
Electric shovels
- **Power:** ~150MW
314-mile natural-gas pipeline from Cook Inlet

Site Layout

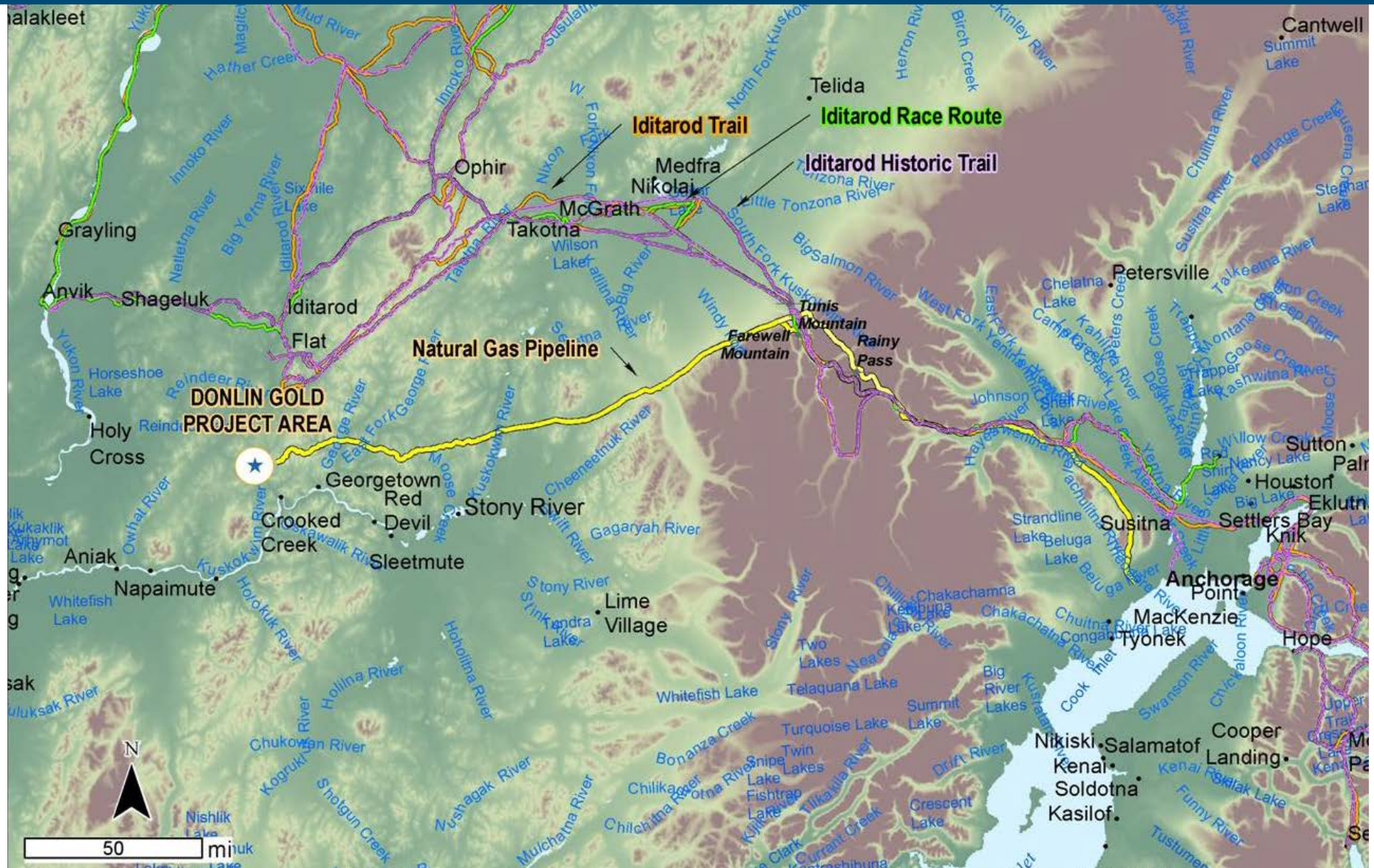


Logistics and Supply Chain



- Donlin Gold
- Transfer Facility
- Road (Jungjuk to Donlin)
- Natural Gas Pipeline
- Fuel Tanker Ship
- Fuel Barge
- Cargo Barge

Natural Gas Pipeline



Natural Gas Pipeline



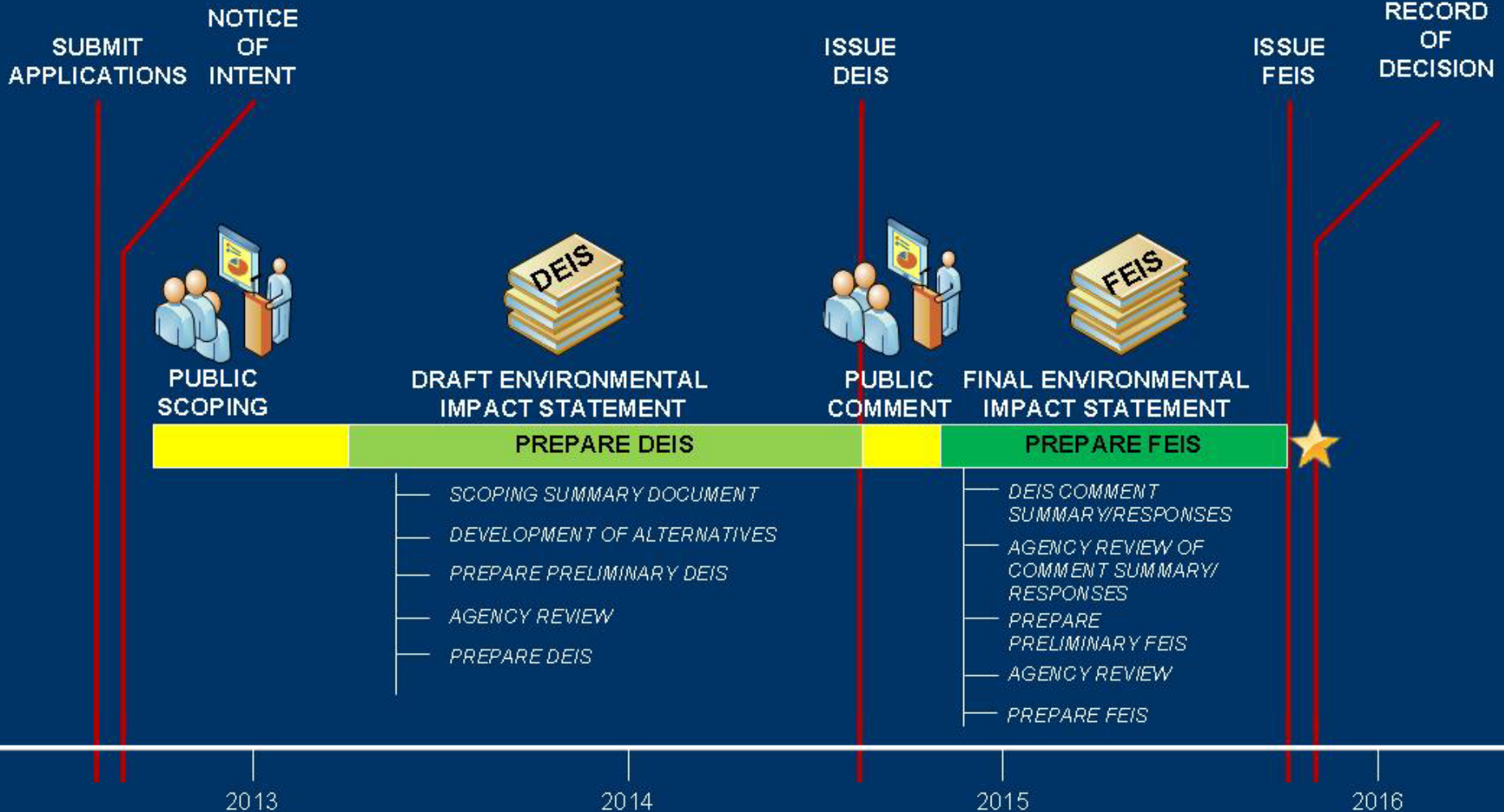
- A 14 inch steel pipeline
 - 30-35 mcf/day (approx. 50% of pipeline capacity)
- Buried along entire 314 mile alignment
 - Above ground for short distances at two fault crossings
 - Horizontal Direction Drilling (HDD) at select water crossings and geotechnically challenging areas
 - Single compressor station
 - Manual check valves
- Construction using temporary roads and crossings
 - Reclaim all construction infrastructure

Project Schedule



- Permitting began July 2012
 - 3-4 year timeline
 - Approximately 100 permits
 - US Army Corps of Engineers lead NEPA agency
 - EPA and other federal agencies are cooperating agencies
 - State of Alaska Large Mine Permitting Team (DNR) coordinating state effort
 - Currently in scoping phase
 - www.donlingoldeis.com comments welcome!
- Construction: 3-4 years
 - 3,000 construction jobs
- Operations: 27+ years
 - 600-1,400 jobs

EIS Timeline



Economic Benefits



- \$329 million spent on exploration 2005-12
- \$375 million annual payroll during construction
- \$ 97 million annual payroll during operations
- Royalties to Calista Corporation distributed to other ANCSA Corps. under 7(i) and 7(j) provision
- State mining license and corporate income taxes
- Healthier regional and state economy
- Jobs, Jobs, Jobs

Reputation for Local Hire



- Local hire practice is very important and will continue throughout the mine life.
- Historically, approx. 90% of on-site workforce have been Calista shareholders or descendants.
- Including majority of supervisors
- Shift schedule allows both good jobs and opportunity for maintaining subsistence activities



Workforce Development



- Message to students:
Finish school!
- College or vocational training schools
- Training in region
- Scholarship support
 - Calista
 - TKC
- Internship opportunities



Iditarod!



THE MILLENNIUM ALASKAN HOTEL PRESENTS



Iditarod Fun Raiser

DINNER & AUCTION

Friday March 1, 2013 • 6:00pm

Four Course Dinner

Entrée:

Filet Mignon and Red Wine Cabernet Sauce Topped with Red King Crab
Served with Garlic Sour Cream Mashed Potatoes, Fresh Asparagus and Grilled Lime

Silent & Live Auctions

Proceeds benefit the Iditarod
\$100 per person

Limited seating – call today for reservation.

907-266-2216

**MILLENNIUM
ALASKAN HOTEL
ANCHORAGE**

You are the Center of Our World

4800 SPENARD ROAD, ANCHORAGE, ALASKA



Shameless plug