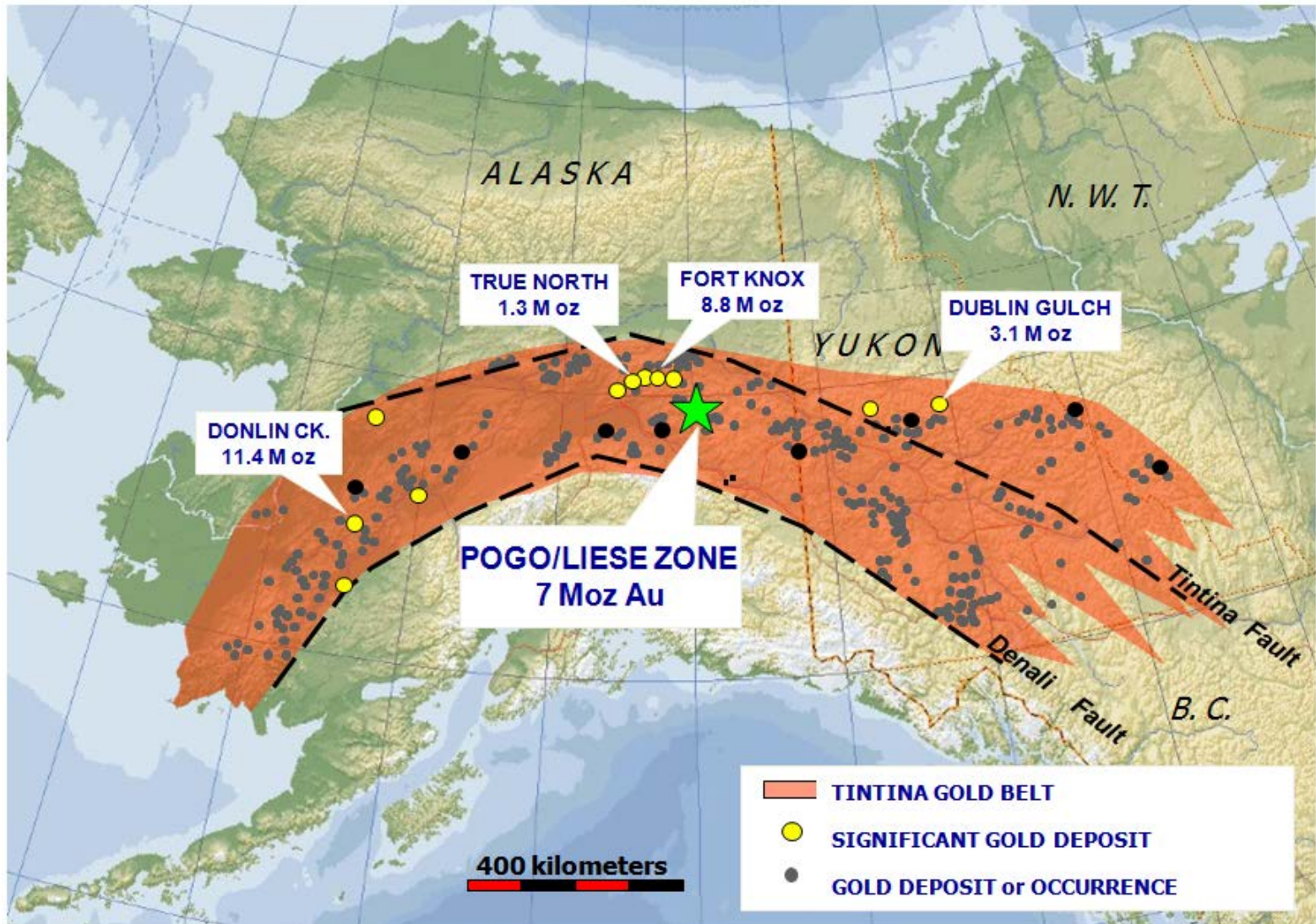


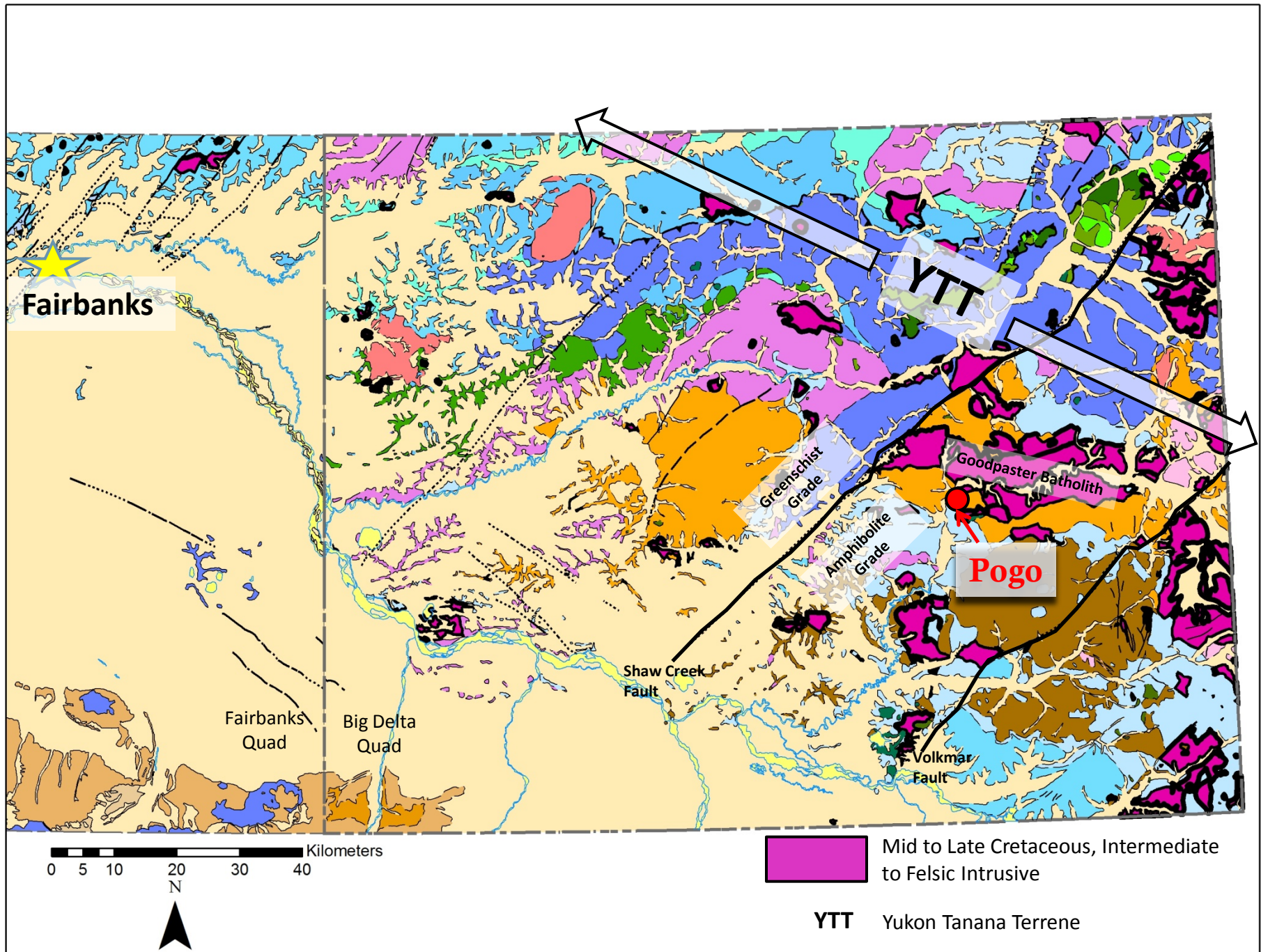


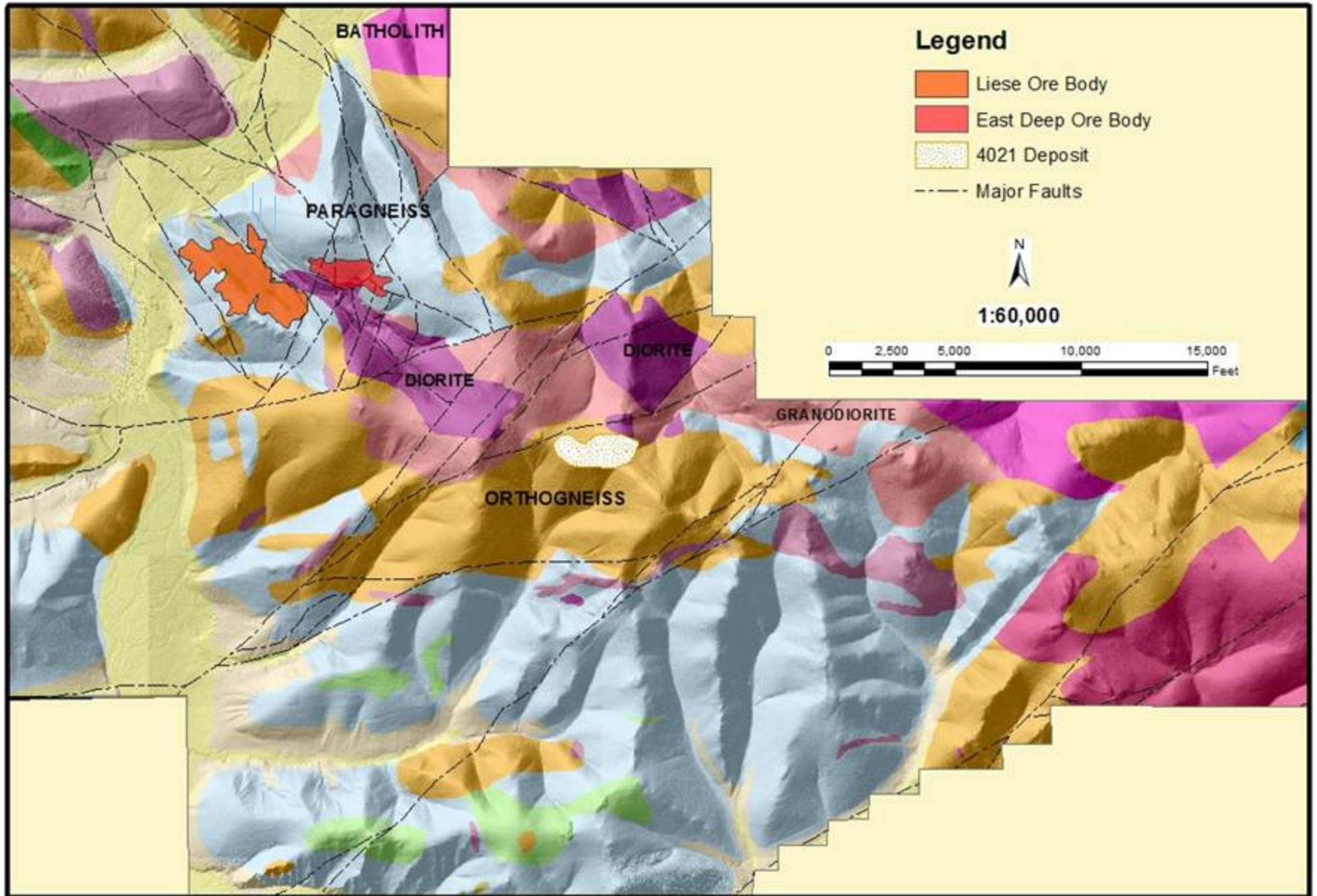
Pogo Gold Mine 2013

“Growth towards a sustained future”

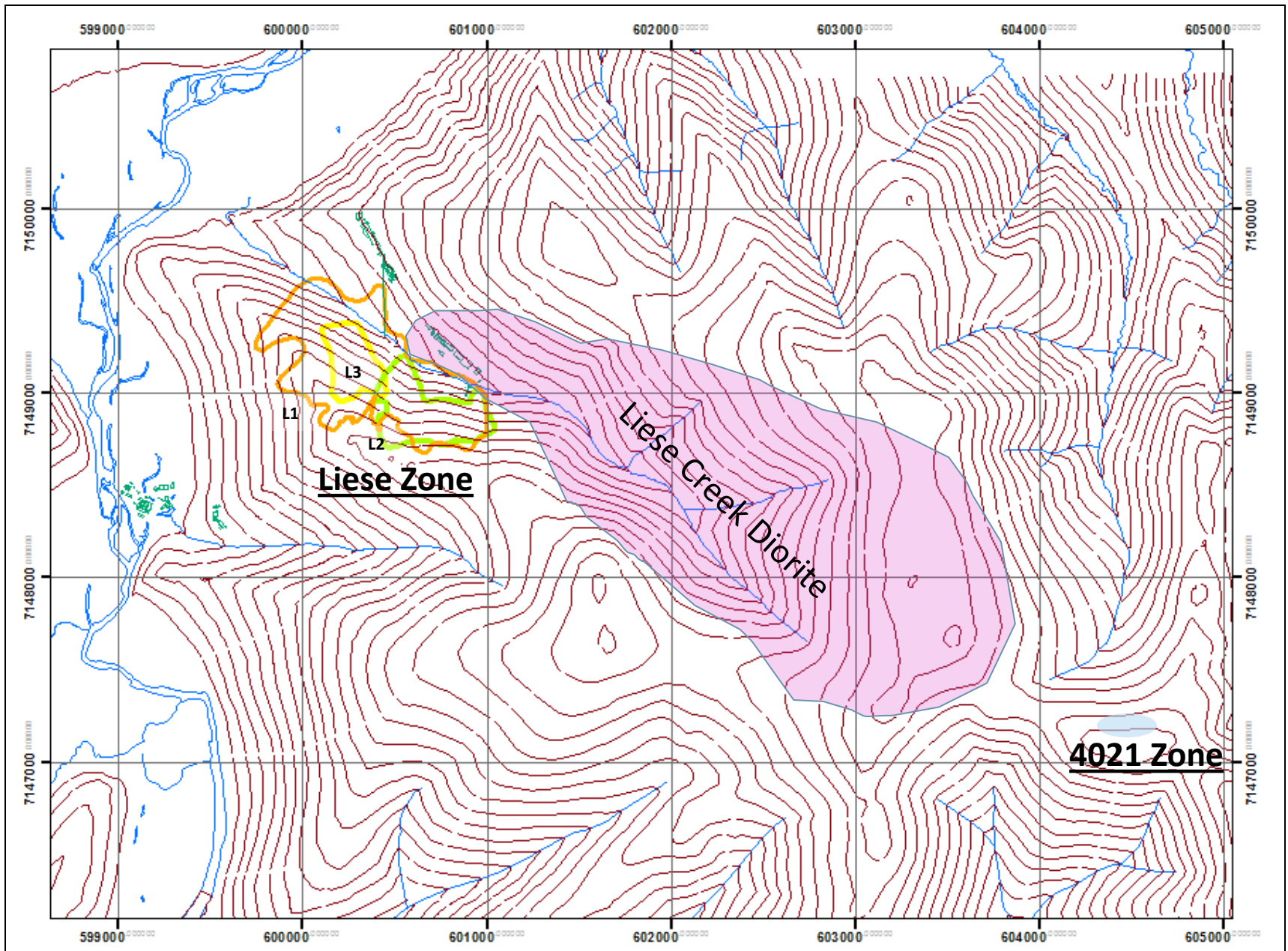
Heart of the Tintina Gold Belt



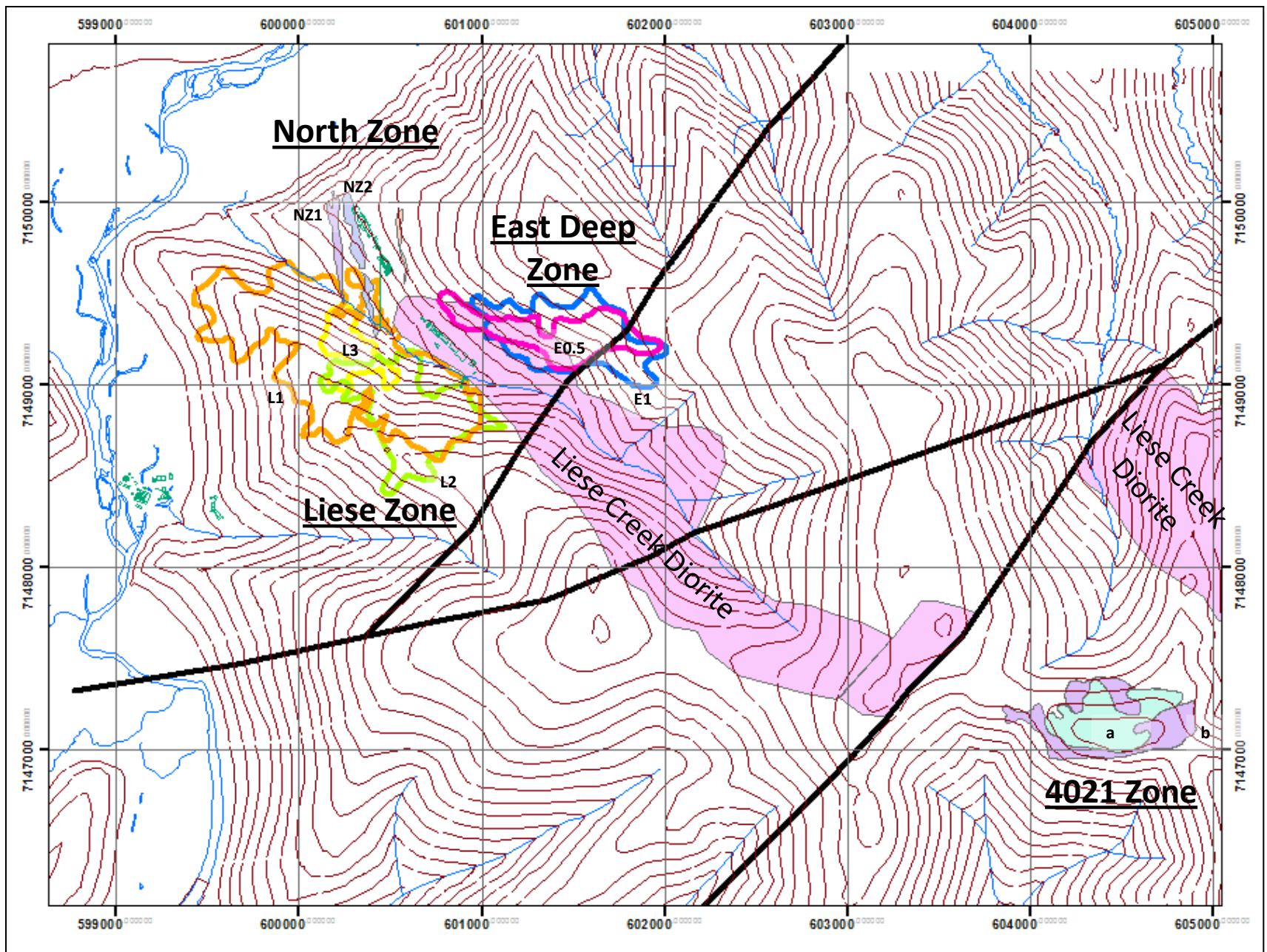




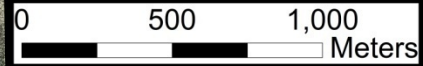
Generalized Geologic Map – Pogo Claims



2006-2010 – “Initial Mining Operations”



2011-2012 “Not the same Pogo!!”



North Zone

NZ1 NZ2

East Deep Zone

L3

E0.5

E1

L1

L2

Liese Zone

Liese Creek Diorite

Liese Creek
Diorite



4021 Zone

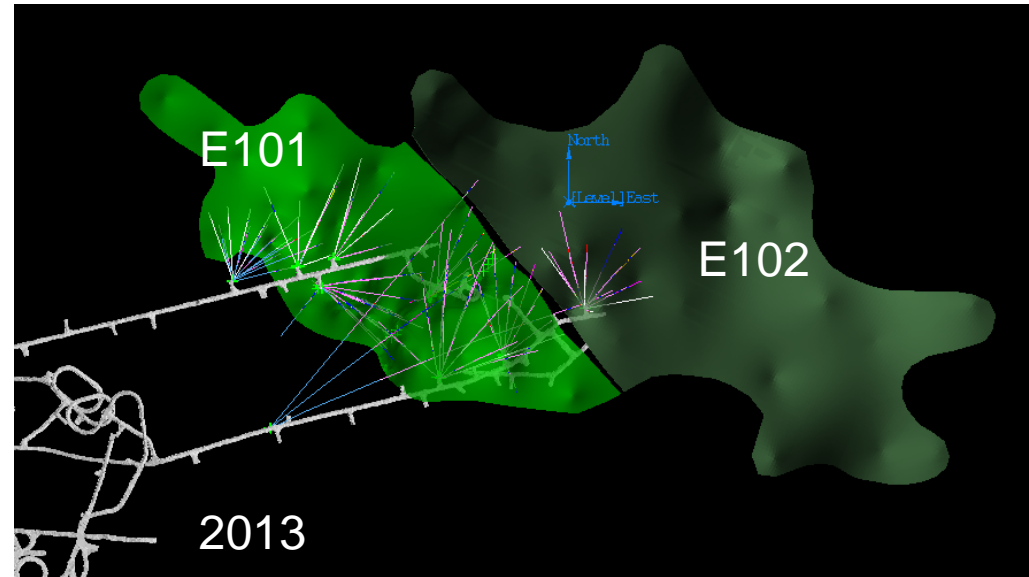
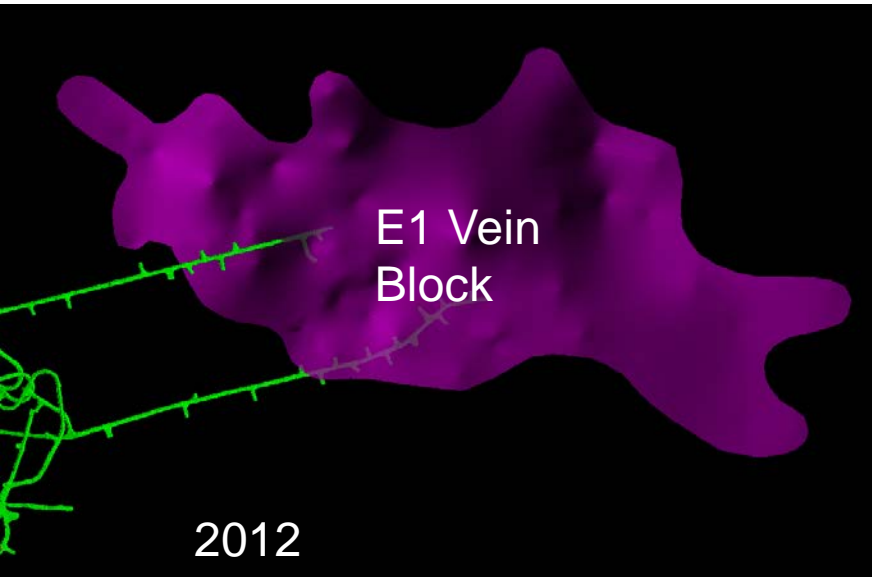
2,000,000 Ounces Strong (July 2012)



SUMITOMO METAL MINING Pogo LLC.



“Growth towards sustained future” – East Deep

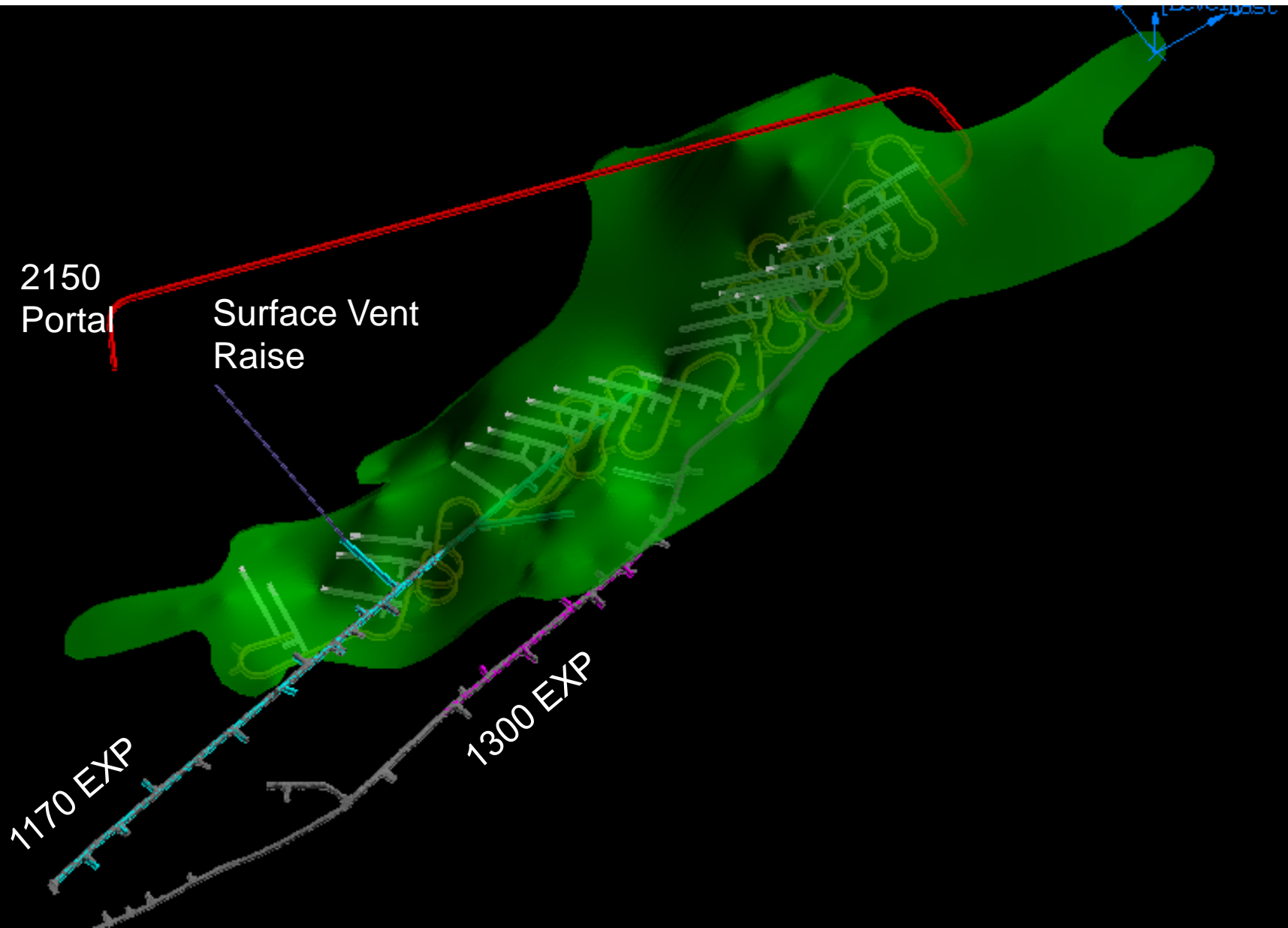


2013

- Definition drilling campaign following drift advancement
- 1130 Test stope – mined 12k ton for bulk met. Tests
- Raise Access between exploration drifts



“Growth towards a sustained future” – East Deep



“Growth towards a sustained future” – East Deep 2150 Portal

2012



“Material borrowing site”



2150 Portal (2013)



Surface Vent
Raise Access
(2014)

“Growth towards a sustained future” – East Deep 2150 Portal

2013



“Growth towards a sustained future” – DSTF Dry Stack Tailings Facility



- With continued exploration success, the current facility was determined too small and an expansion was permitted



“Growth towards a sustained future” – DSTF Dry Stack Tailings Facility



2013 – 20Mton Capacity



“Growth towards a sustained future” – Additional Projects

- Mine Water Treatment Plant – Expansion and Upgrades
- ISO 40001 Certifications
- New Incinerator
- Wildlife Baseline Studies – 4021 and South Pogo exploration areas
- Electrical Substation – ER1
- Mill Glycol Boiler



“Growth towards a sustained future” – 2013 Sociological Survey

“How does Pogo Mine affect the local and Alaska economies?”

- SMM Pogo contracted with McDowell Group to conduct survey from 2012 data.

Highlights:

Pogo Mine directly **employed an average of 329 workers** in 2012 (excluding on-site contractors).

Pogo Mine paid a total of **\$24.3 million in taxes** to state government in 2012.

Pogo Mine-related direct, indirect, and induced employment statewide totaled **664 jobs** with a total statewide payroll of **\$64.5 million** in 2012.

This local employment represents approximately **1.3 percent of all employment** in the Fairbanks North Star Borough and the Delta area (Southeast Fairbanks Census Area), and approximately **2.8 percent of all wages** paid in this area.



“Growth towards a sustained future” – EXPLORATION

Surface Exploration:

~110,000 ft drilled (HQ/NQ)
Mid-APR – OCT

Road based and helicopter
supported program

3x tracked LF90's
2x fly LF70s

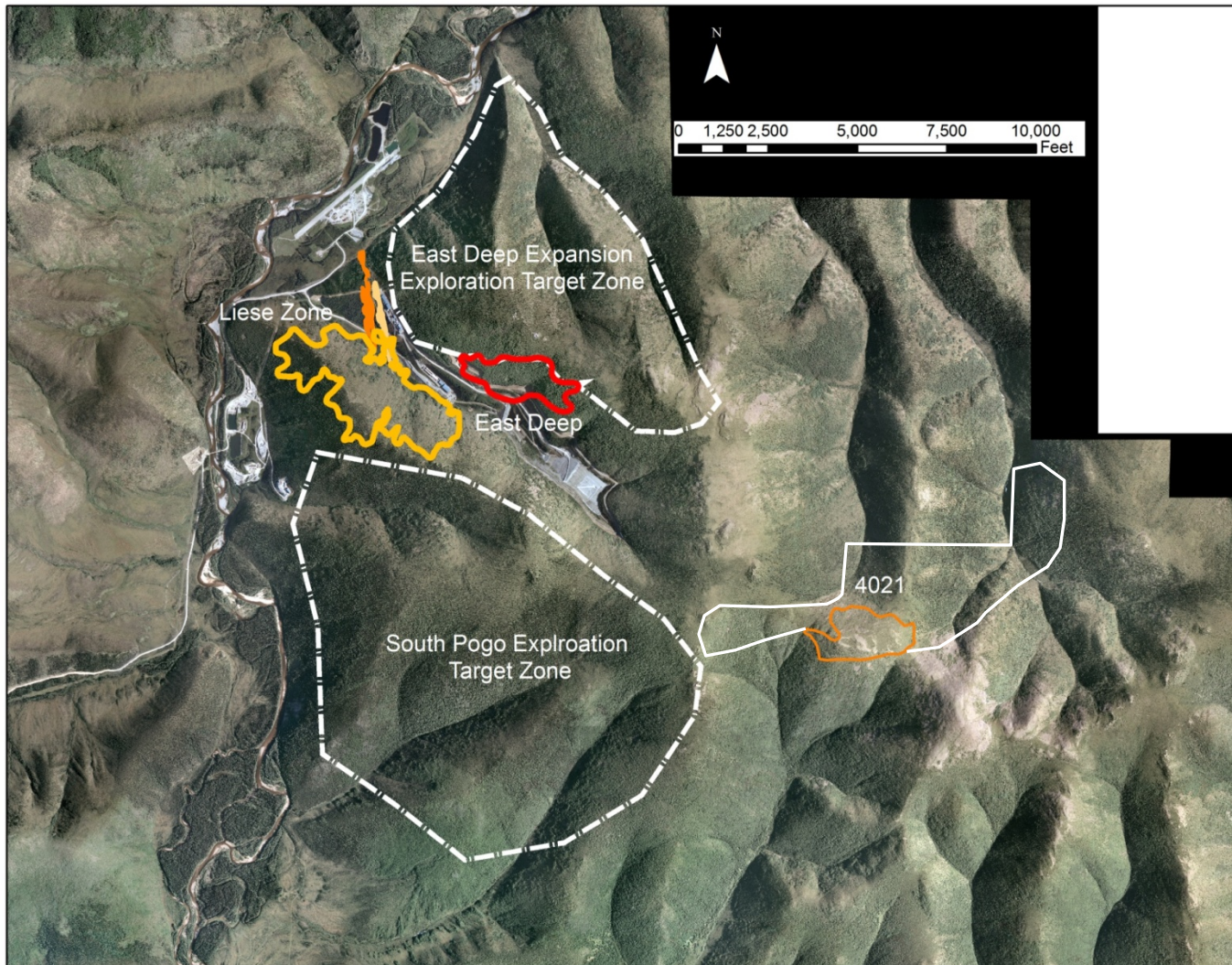
Focus is near mine targets to
add to resource in near term

Underground Exploration:

~30,000 ft drilled (or in
progress)

1x LM150

Focus is follow up exploration
at depth from existing UG
development





1 - NZ-ED
Intersection

NZ

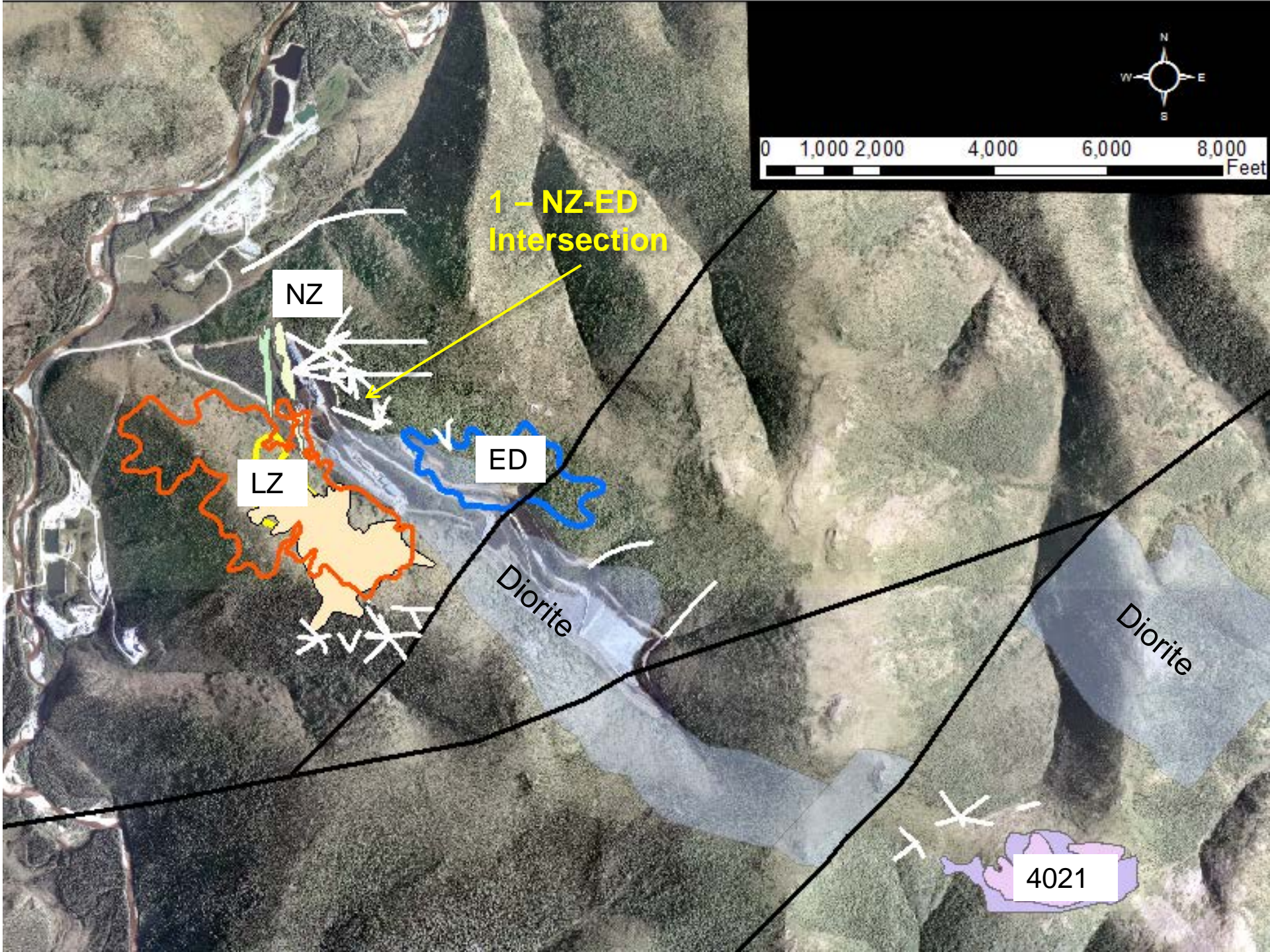
LZ

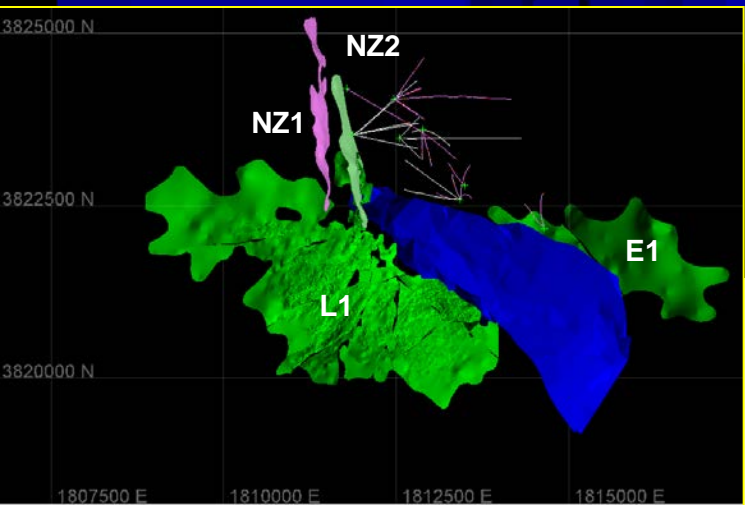
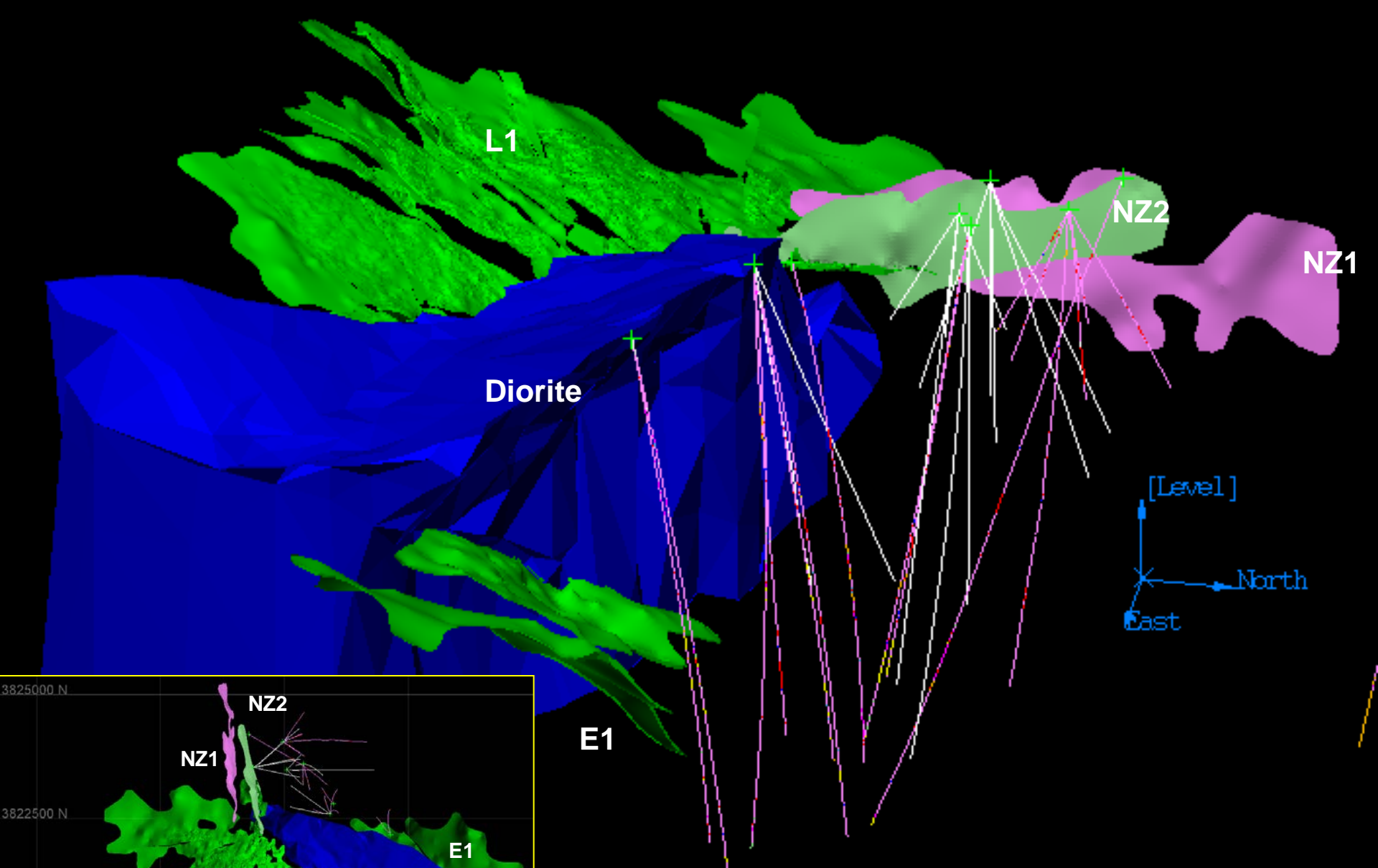
ED

Diorite

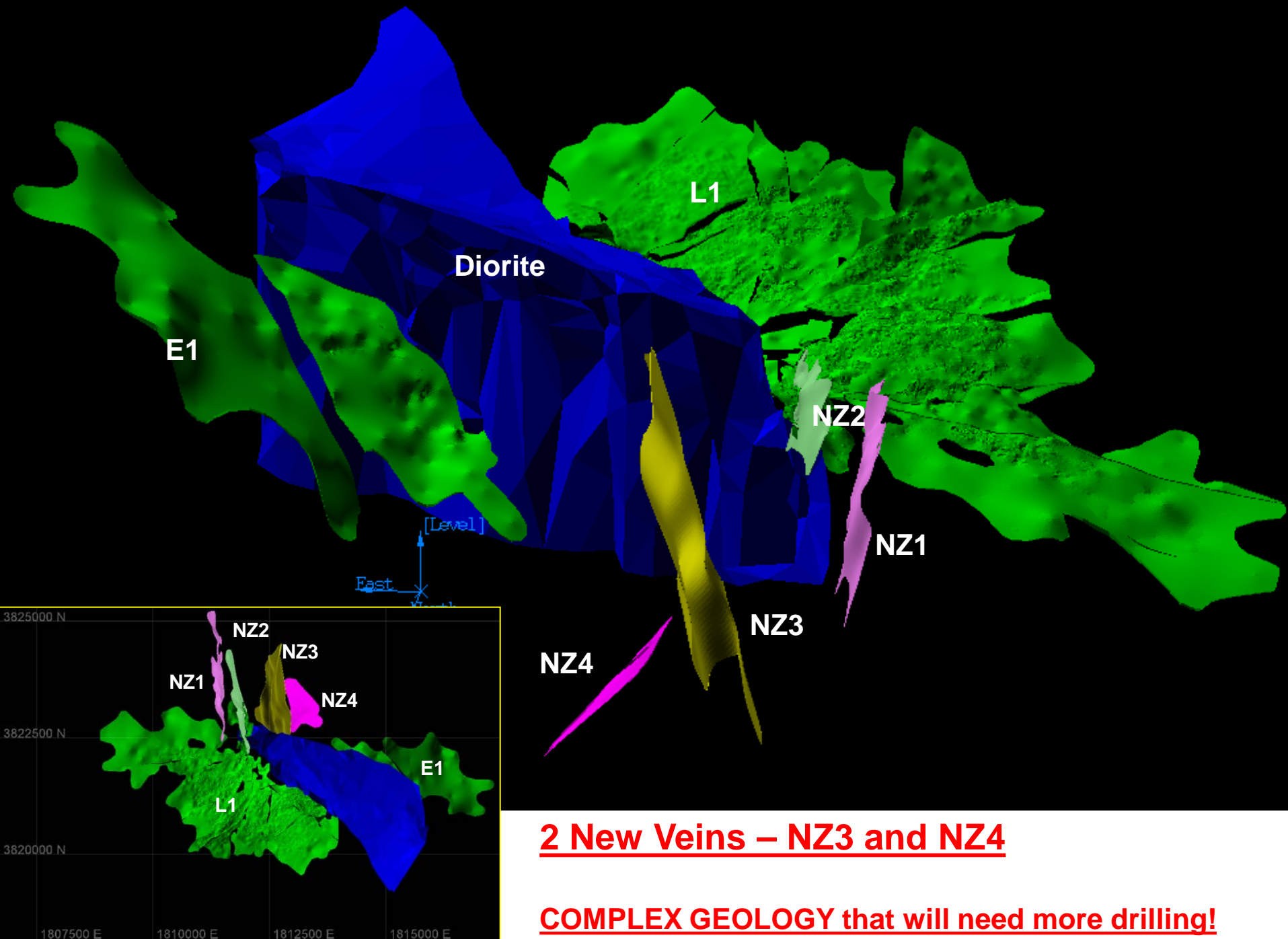
Diorite

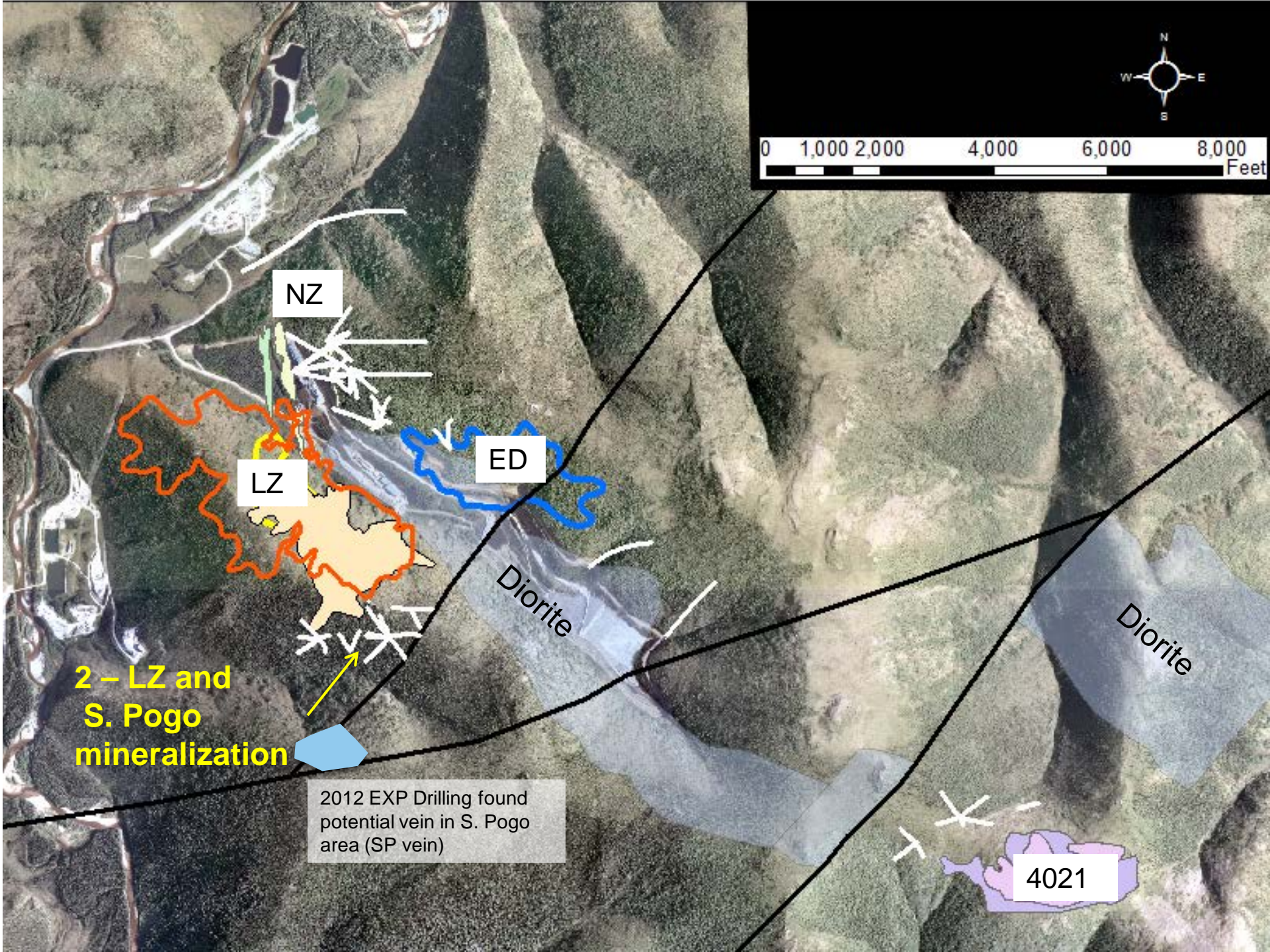
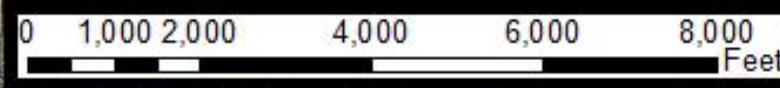
4021





23 Drill holes – Road Based
2000' – 4500' depths





NZ

LZ

ED

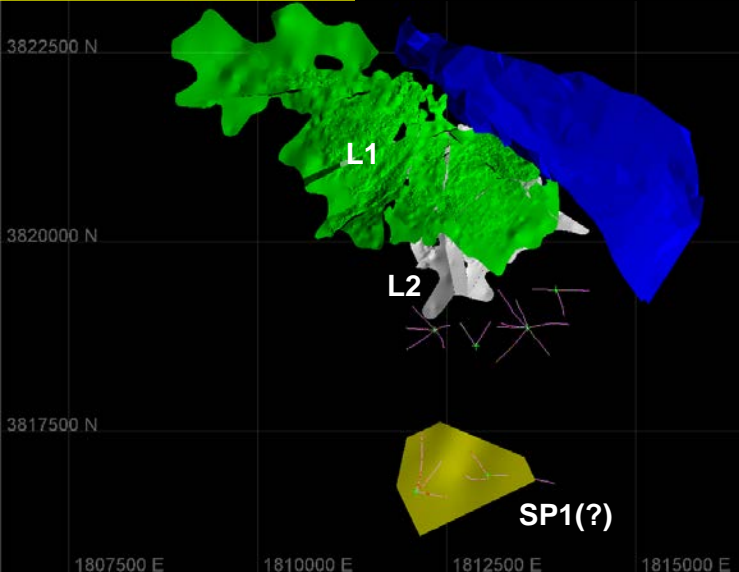
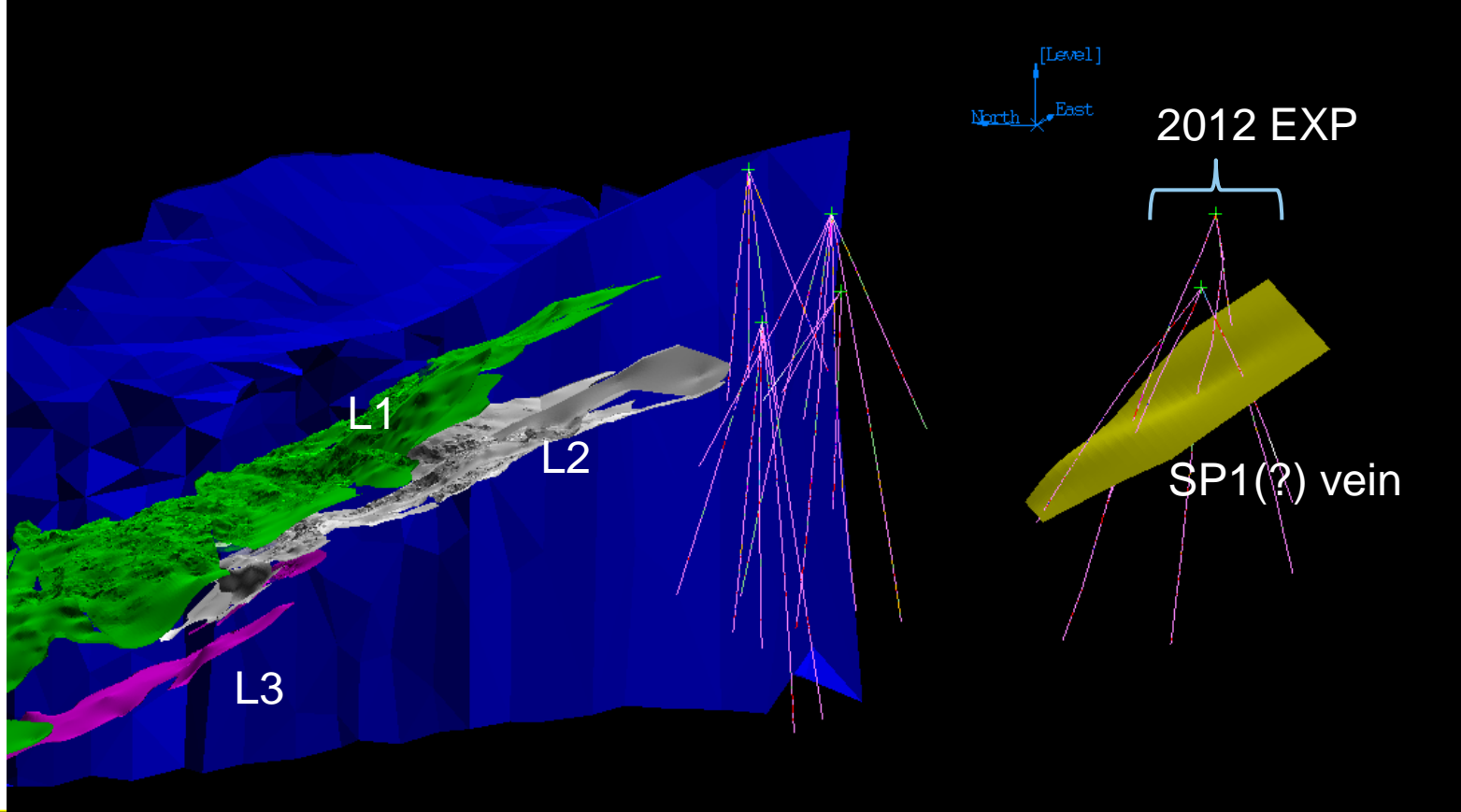
Diorite

Diorite

2 - LZ and S. Pogo mineralization

2012 EXP Drilling found potential vein in S. Pogo area (SP vein)

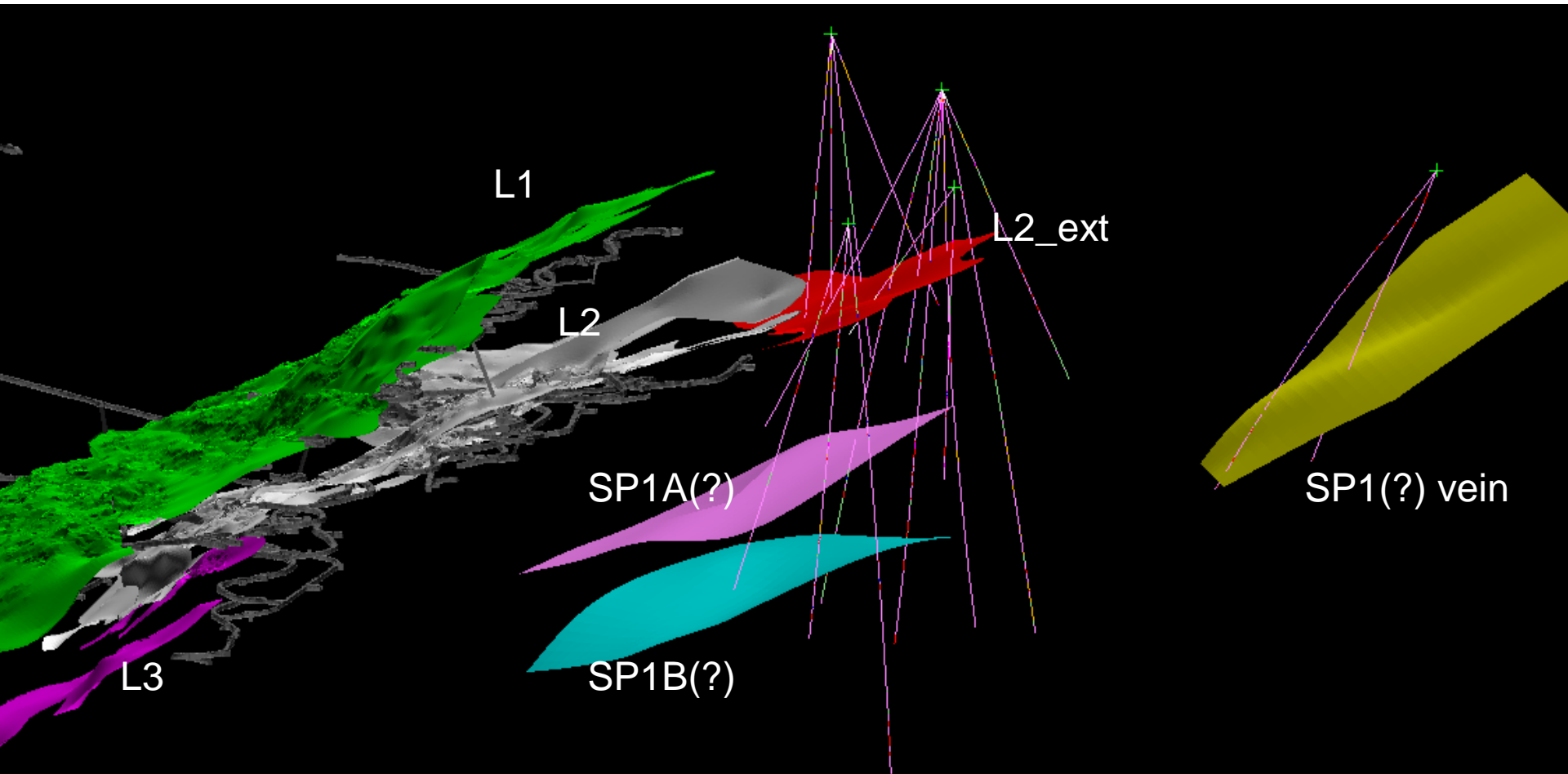
4021



16 Drill holes – Helicopter Supported
800' – 2000' depths

Is there structural, vein, and Au
continuity between Liese Zone
(L1,2,and3) and the mineralization
discovered in 2012 in S. Pogo?

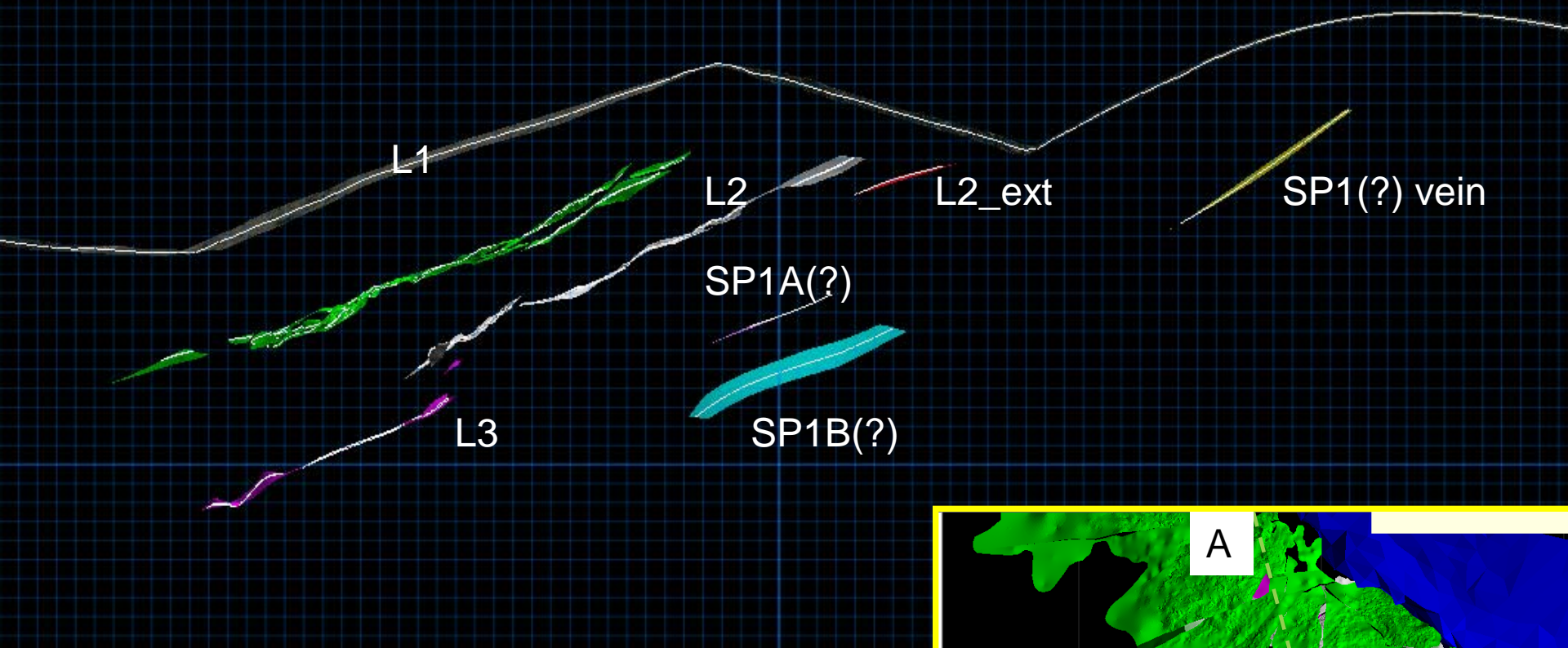
Upside – near current UG access



A

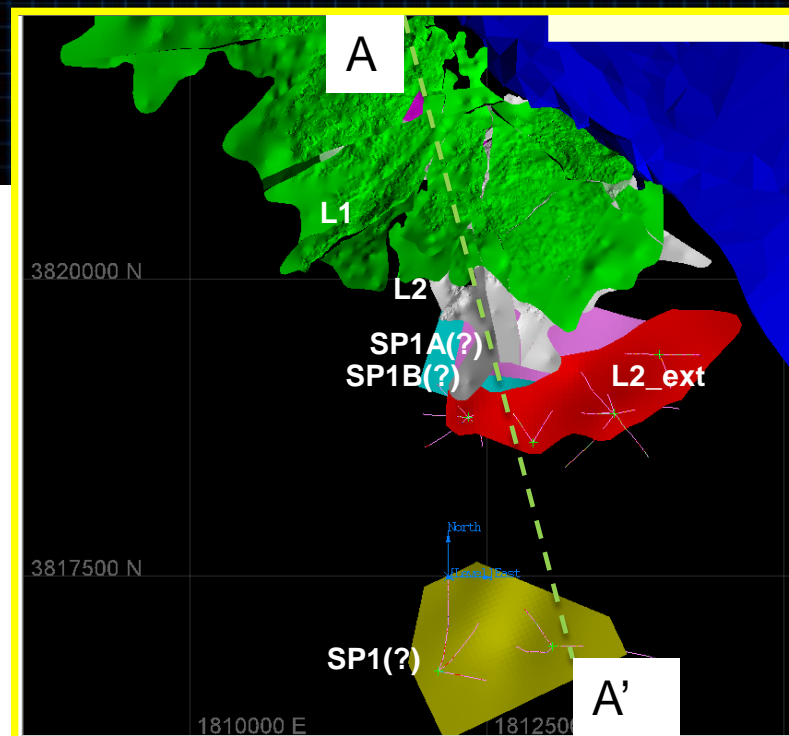
Looking East

A'

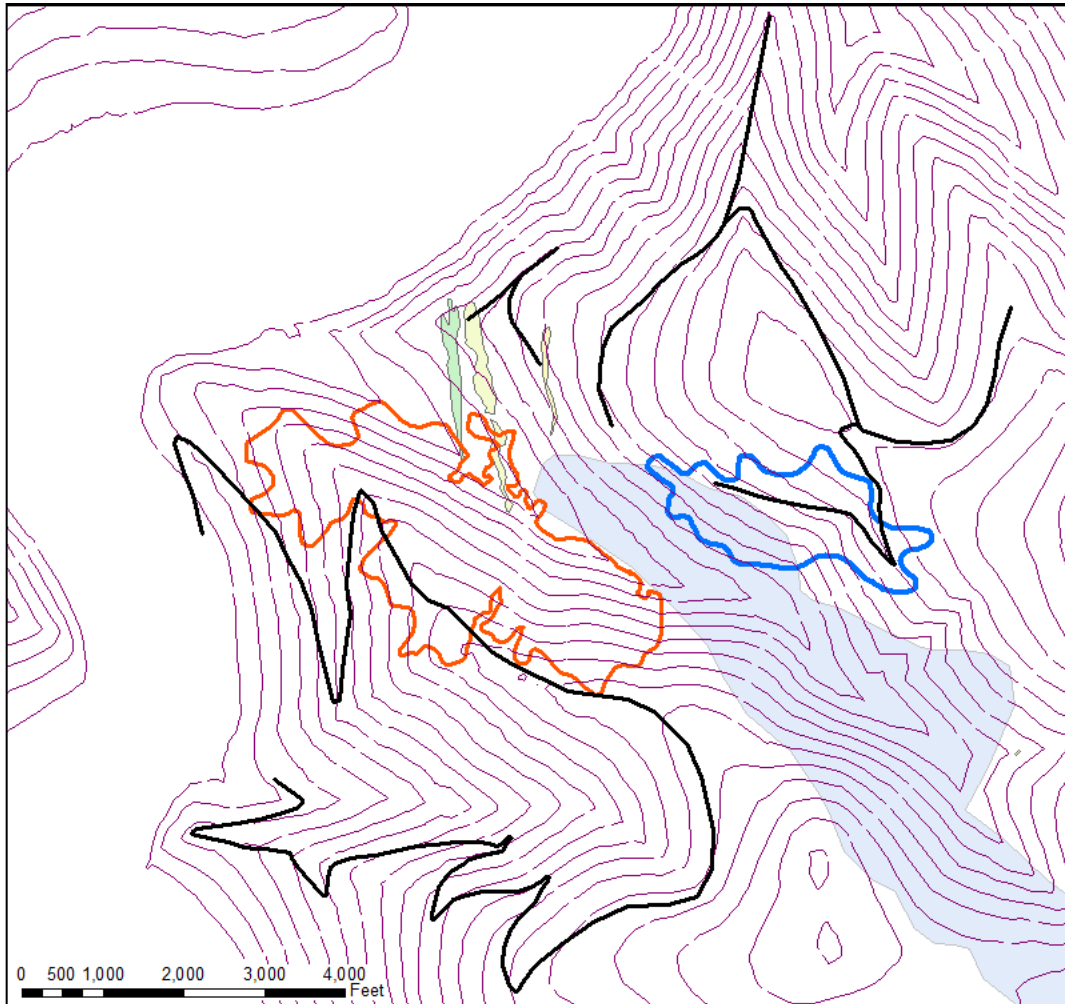


3 New Veins – SP1A, SP1B, and L2_ext

COMPLEX GEOLOGY that will need more drilling!



“Growth towards a sustained future” – 2014 Exploration



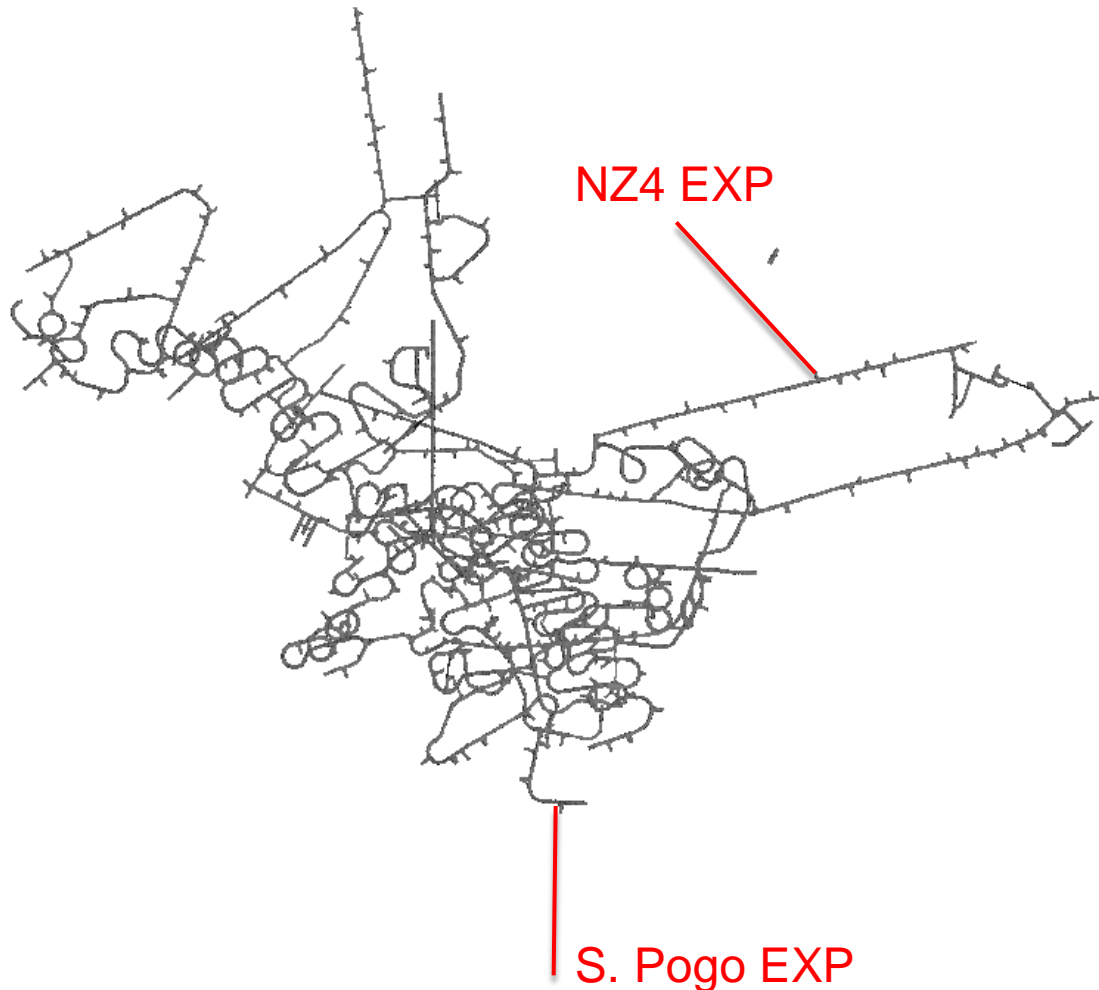
Focus: Close in MINE_EX
S. Pogo, NZ3/4, and East Deep

1. Development of Exploration Roads

- Wetland studies complete
- Permitting in progress

Intent: for future exploration
campaigns to transition away
from the higher risk helicopter
supported programs.

“Growth towards a sustained future” – 2014 Exploration



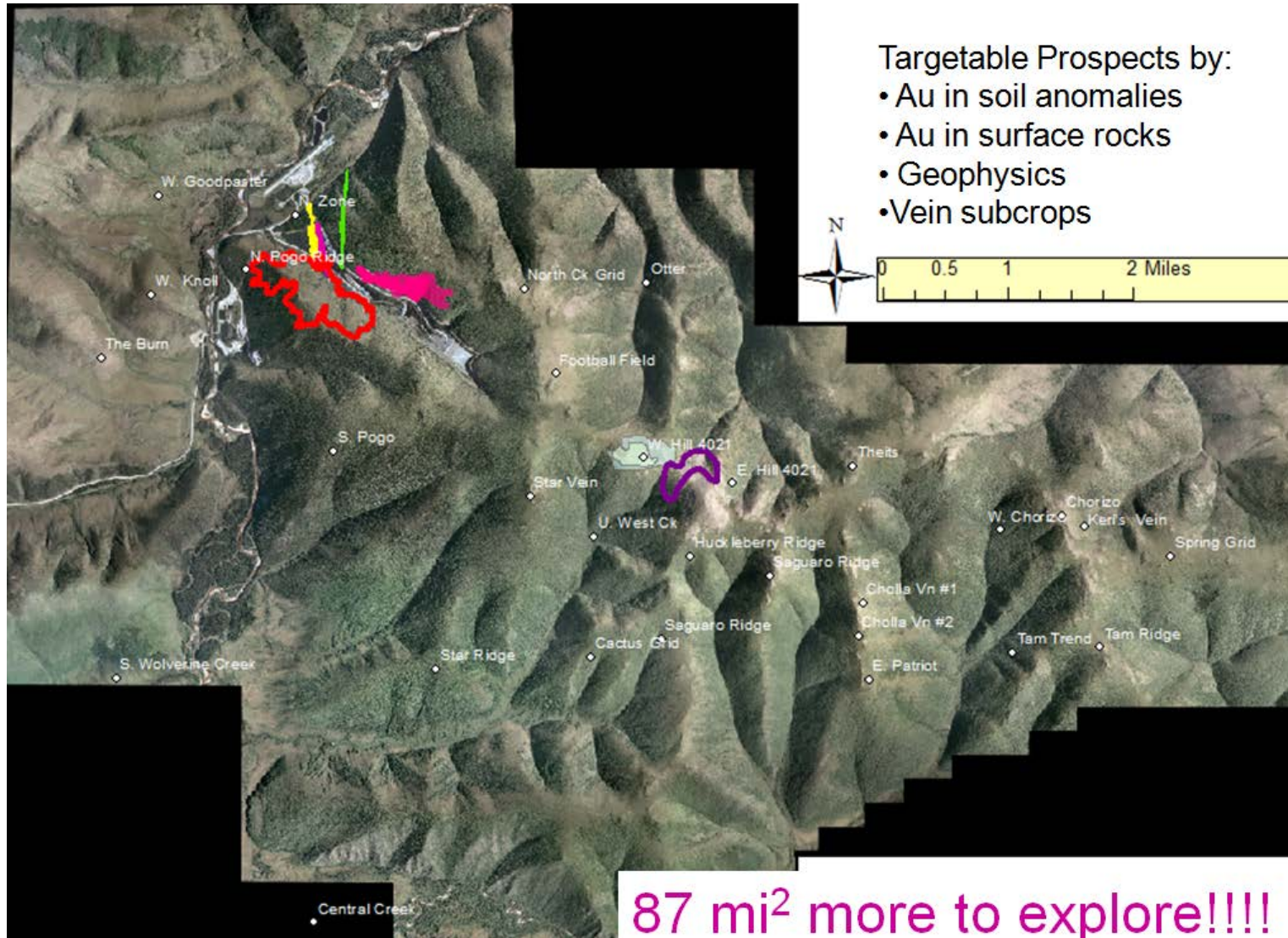
Focus: Close in MINE_EX
S. Pogo, NZ3/4, and East Deep

2. Development of Underground Exploration Drifts

- Designs complete
- In budgeting process

Intent: Continue exploration of
near zones close to current
development.

“Growth towards a sustained future” – 20** Exploration



POGO MINE



SUMITOMO METAL MINING POGO LLC



MINING DONE RIGHT