



CO-EXIST

Responsible mining. Sustainable fisheries.

Alliance Fairbanks Industry Update Forum

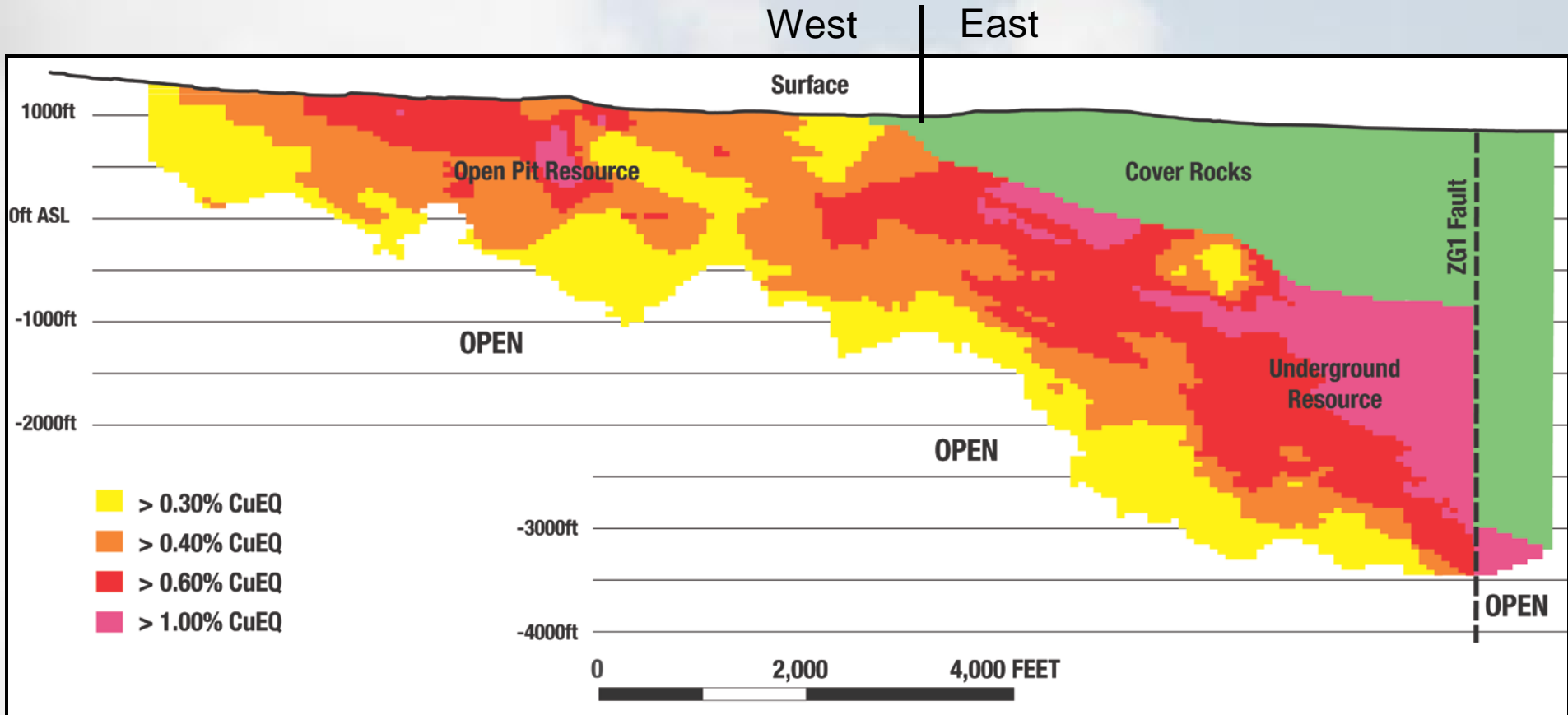
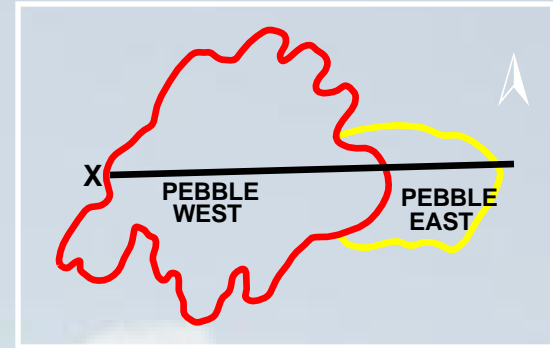
Mike Heatwole, VP Public Affairs
Pebble Limited Partnership
September 21, 2011

Pebble Location



Pebble Deposit

Total In-Situ Resource: 80.6B lbs. Copper,
107.4M ounces Gold &
5.6B lbs. Molybdenum.



Reclamation Immediate



Minimal Impact



Environmental Studies

\$120+ Million

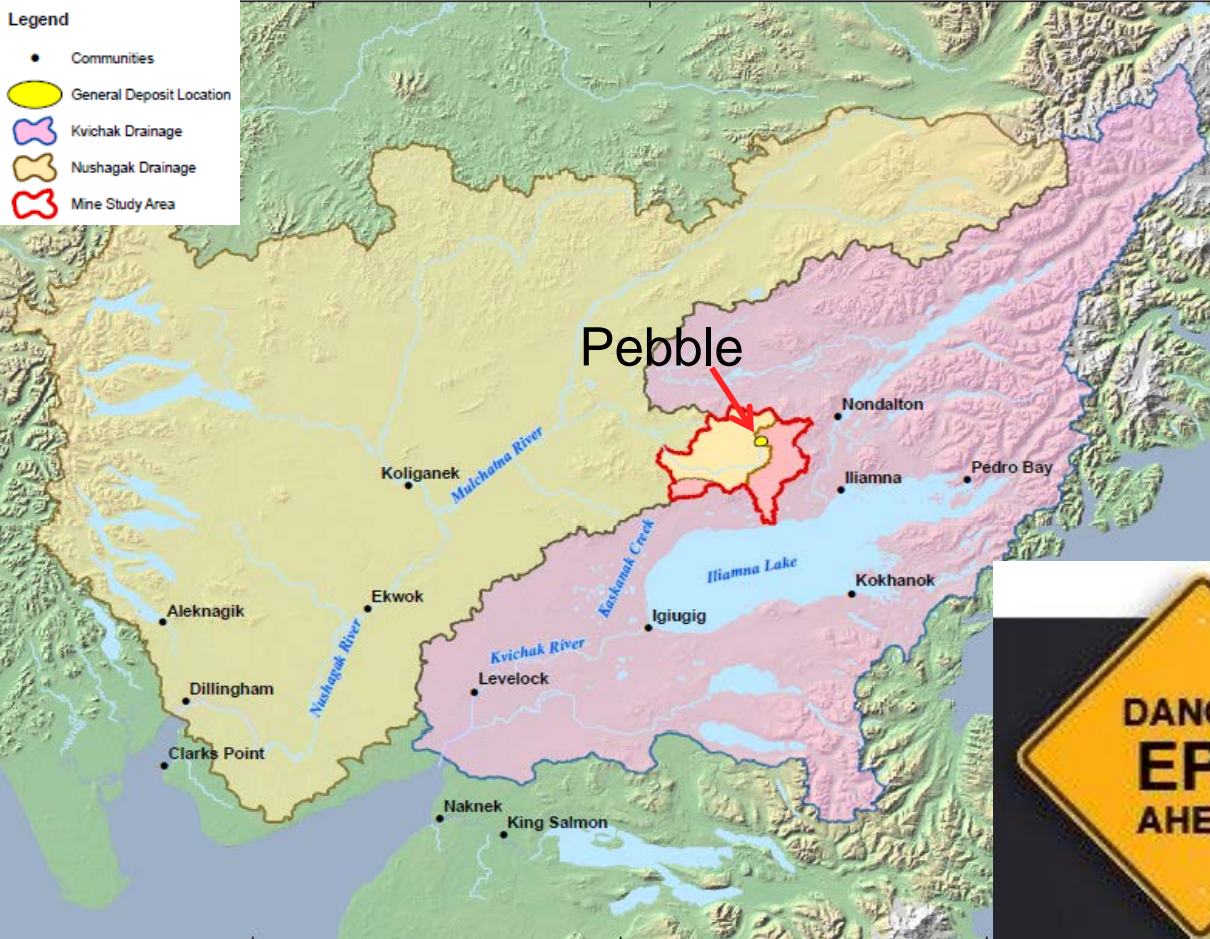
- Surface Water Hydrology
- Surface/Ground Water Quality
- Groundwater Hydrology
- Geochemistry
- Snow Surveys
- Analytical QA/QC
- Fish & Aquatic Resources
- Macroinvertebrates
- Wetlands
- Trace Elements
- Flow Habitat Study
- Iliamna Lake Study
- Marine
- Wildlife
- Air Quality
- Noise
- Cultural Resources
- Subsistence
- Land Use
- Recreation
- Socioeconomics
- Visual Aesthetics
- Impact assessment & management
- Mine closure & reclamation



Infrastructure



EPA 404c



Bristol Bay Region
39, 184 sq. miles

State of Virginia
42,774 sq. miles



Nushagak River

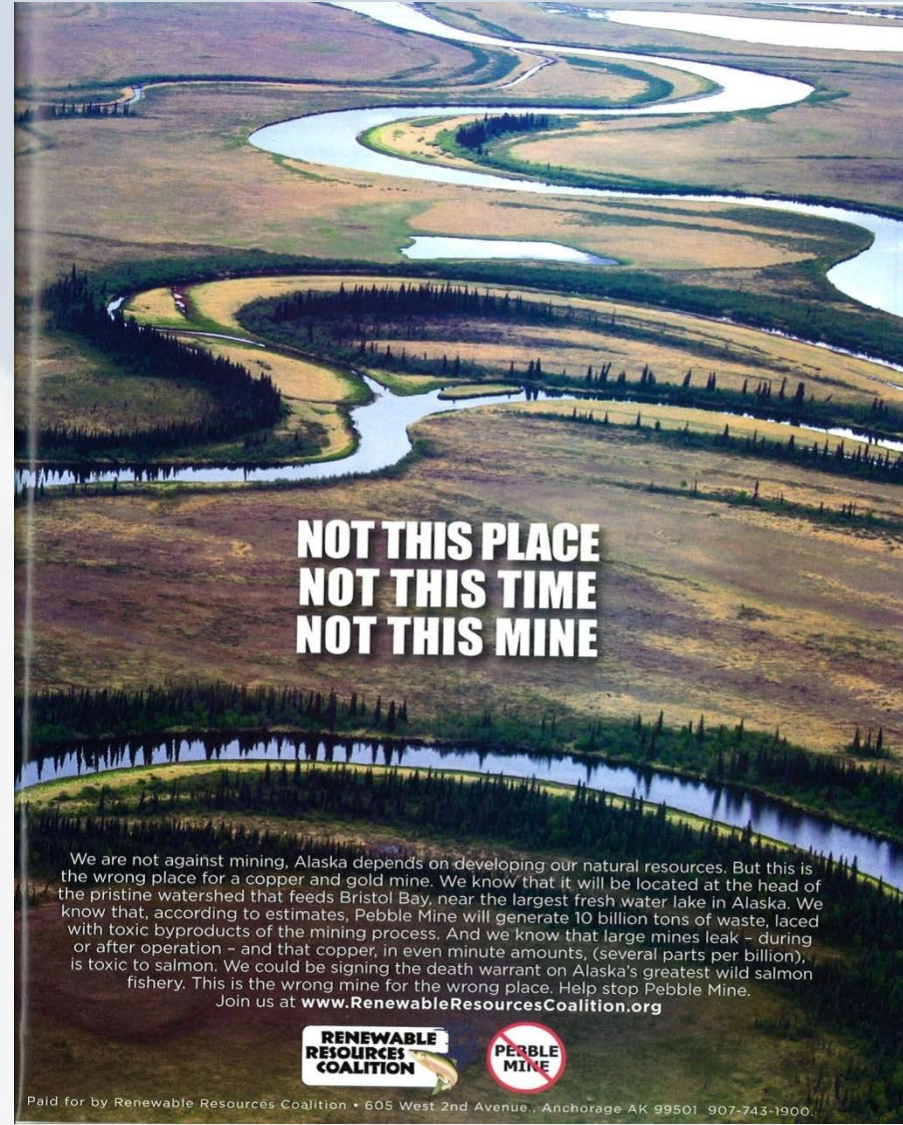
- 12,735 mi² = Maryland

Kvichak River

- 8,017 mi² = New Jersey





FACT vs. FICTION



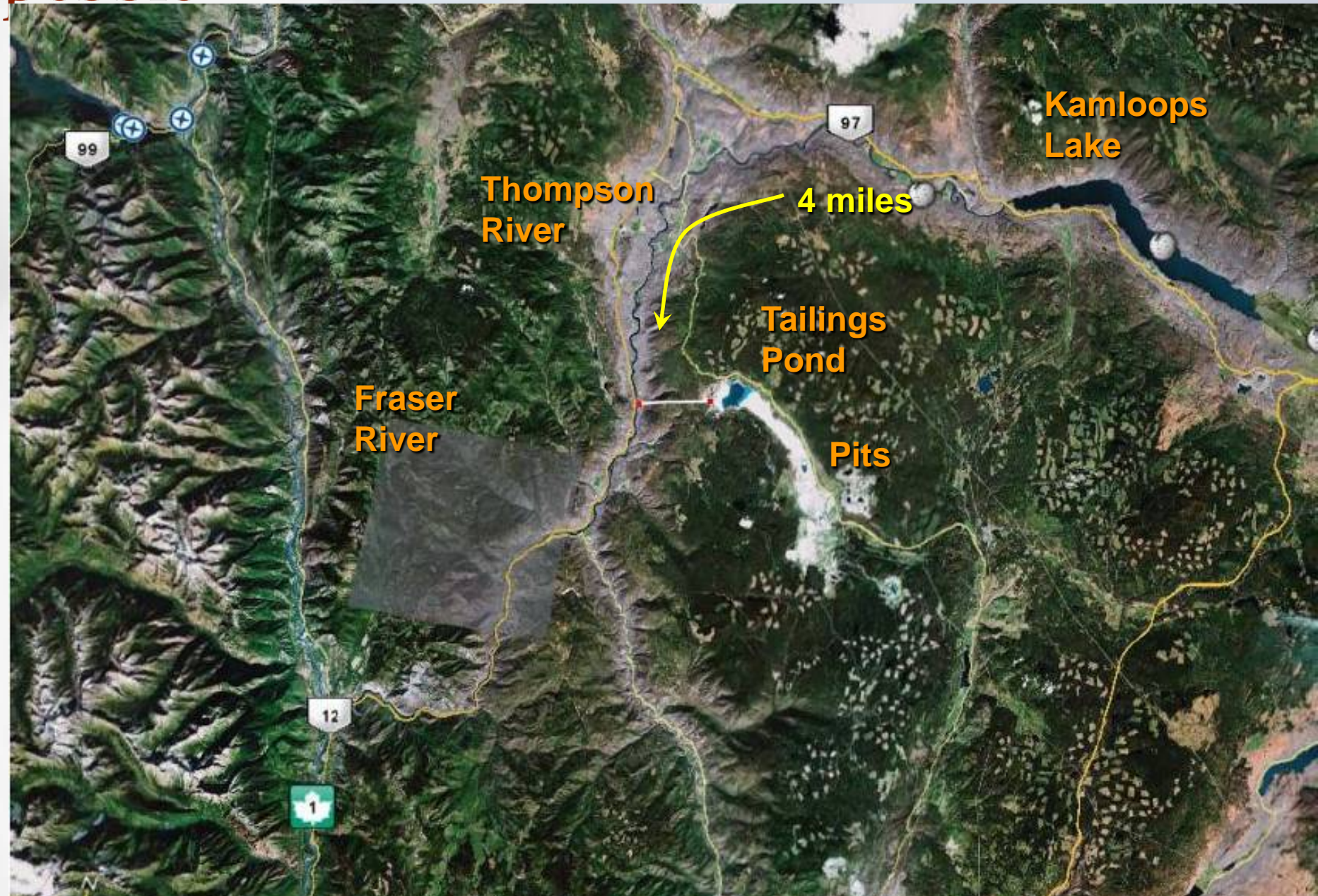
**NOT THIS PLACE
NOT THIS TIME
NOT THIS MINE**

We are not against mining, Alaska depends on developing our natural resources. But this is the wrong place for a copper and gold mine. We know that it will be located at the head of the pristine watershed that feeds Bristol Bay, near the largest fresh water lake in Alaska. We know that, according to estimates, Pebble Mine will generate 10 billion tons of waste - laced with toxic byproducts of the mining process. And we know that large mines leak - during or after operation - and that copper, in even minute amounts, (several parts per billion), is toxic to salmon. We could be signing the death warrant on Alaska's greatest wild salmon fishery. This is the wrong mine for the wrong place. Help stop Pebble Mine.
Join us at www.RenewableResourcesCoalition.org

RENEWABLE RESOURCES COALITION  

Paid for by Renewable Resources Coalition • 605 West 2nd Avenue, Anchorage AK 99501 907-743-1900.

Highland Valley Mine





Collahuasi (mine)

Mantos Blancos (mine)

Mantoverde (mine)

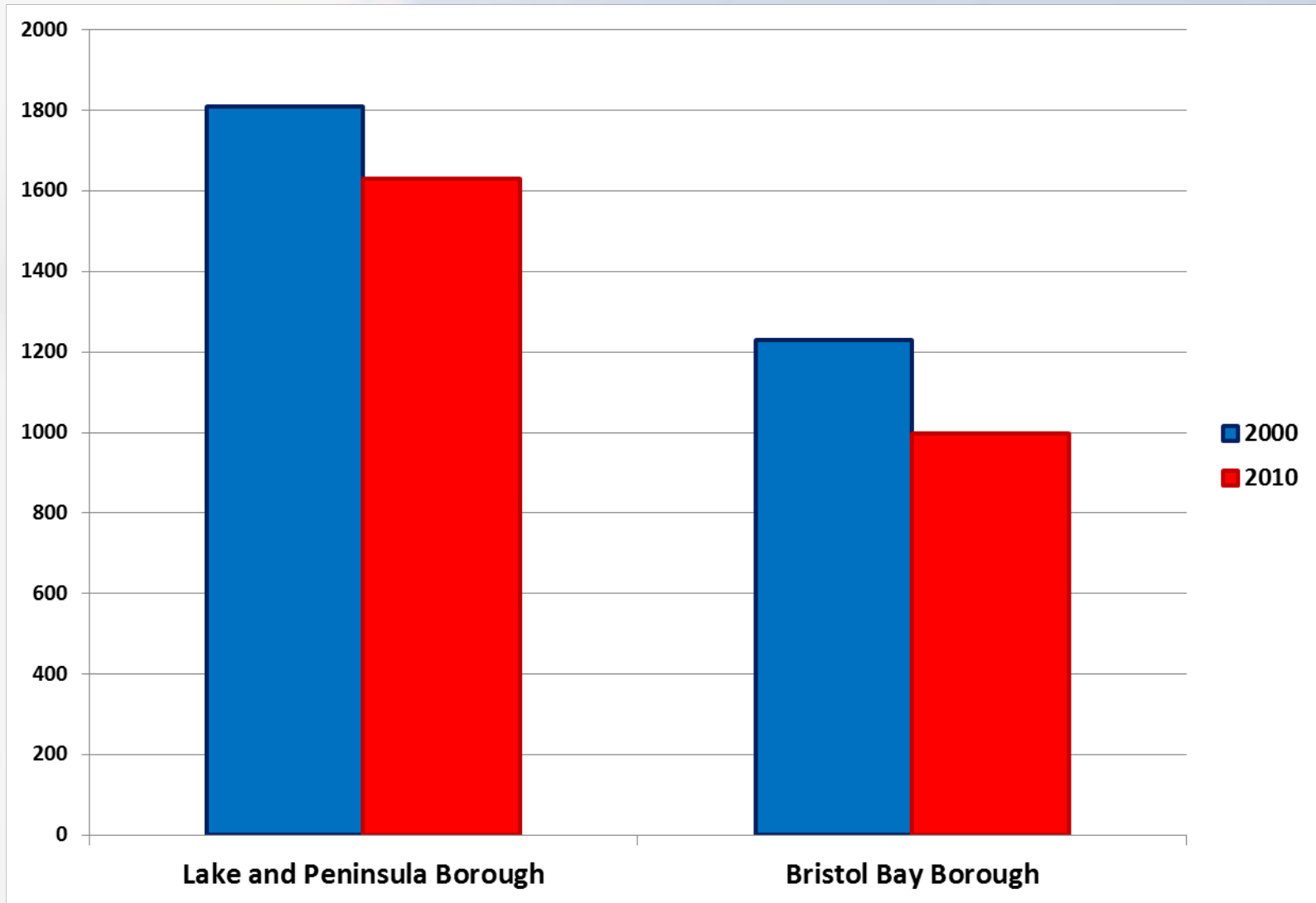
Chagres (smelter)
El Soldado (mine)
Los Bronces (mine)

February 7, 2010
Epicenter of 8.8 magnitude
Chilean earthquake

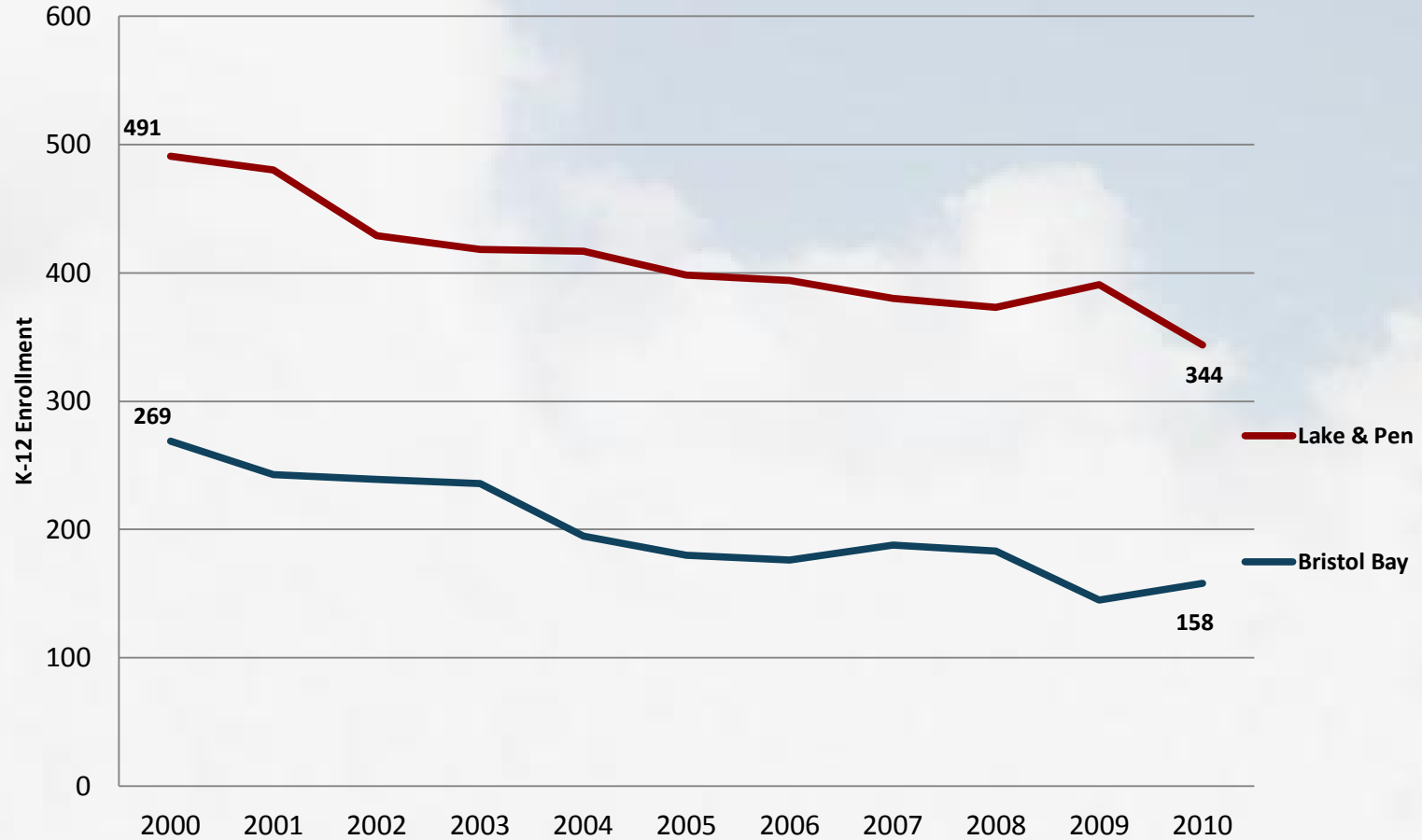
**Offshore
Maule, Chile**

- M8.8
- 169
Aftershocks

Region Population



Region School Enrollment



Data from AK Dept. of Education & Early Development. Enrollment as of Oct. 1 each year
<http://www.eed.state.ak.us/stats/>

Copper – Building Block for Green Economy



- Chevrolet **Volt** – 150 lbs of copper
- **Hybrid car** nearly 2X the copper – 42lbs vs. 78lbs
- 3MW **Wind turbine** nearly 5 tons of copper
- **Solar panels** up to 60% copper