



Alaska Graphite

Tech Materials for Global Ingenuity

Presentation to:

Alliance Presentation

March 17, 2023

Mike Schaffner

Forward-Looking Statements

This presentation contains "forward-looking statements" which are made as of the date it is presented and Graphite One Inc. ("the Company") does not intend, and assumes no obligation, to update these forward-looking statements. Forward-looking statements include, but are not limited to, statements with regard to the actual ability to produce graphite in any form, including spherical graphite, ultimate further and final results of additional test-work, progress of the Company, the timing and successful completion of the feasibility studies, industry and Company projections regarding graphite demand, electric vehicles and power storage devices, results of studies being accurate regarding characteristics of the Graphite Creek mineralization, the timing, amount and success of future exploration and exploitation activities, and events or developments that the Company expects.

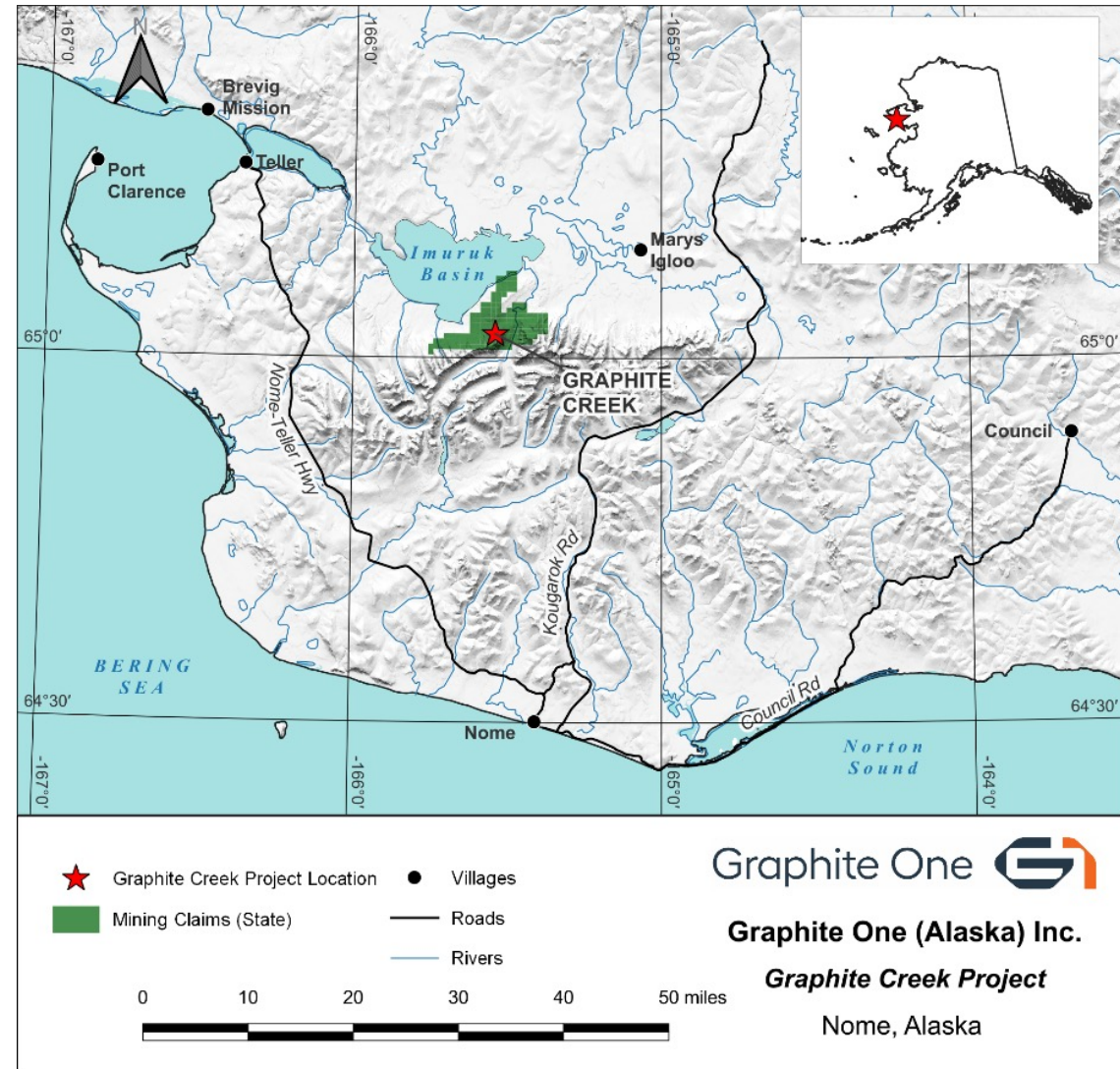
Information concerning measured, inferred and indicated mineral resource estimates also may be deemed to be forward-looking information in that it reflects a prediction of the mineralization that would be encountered if a mineral deposit were developed and mined. Although the Company believes the expectations expressed in such forward-looking statements are based on reasonable assumptions, such statements are not guarantees of future performance and actual results or developments may differ materially from those in the forward-looking statements.

Forward-looking statements involve known and unknown risks, uncertainties and other factors which may cause the actual results, performance or developments of the Company to be materially different from those in the forward-looking statements. Such factors include, among others, results of product development test work may not be indicative of the advancement of the project as anticipated, or at all, market prices, exploitation and exploration successes, continuity of mineralization, uncertainties related to the ability to obtain permits, licenses and title delays, changes in government policies regarding mining and natural resource exploitation, accidents, labour disputes and other risks of the mining industry; ability to get or delays in obtaining capital and financing, and general economic, market or business conditions.

Readers are cautioned not to place undue reliance on this forward-looking information, which is given as of the date presented. For more information on the Company, investors should review the Company's continuous disclosure filings that are available at www.sedar.com.

Graphite Creek Project Location

- 37 Miles North of Nome Alaska
- 14 Miles off the Kougarok Road
- The project consists of 176 claims over 23,680 acres
- All claims are located on State Land



Key Facts:

Graphite consumption is projected to increase 10X in the next 10 years.

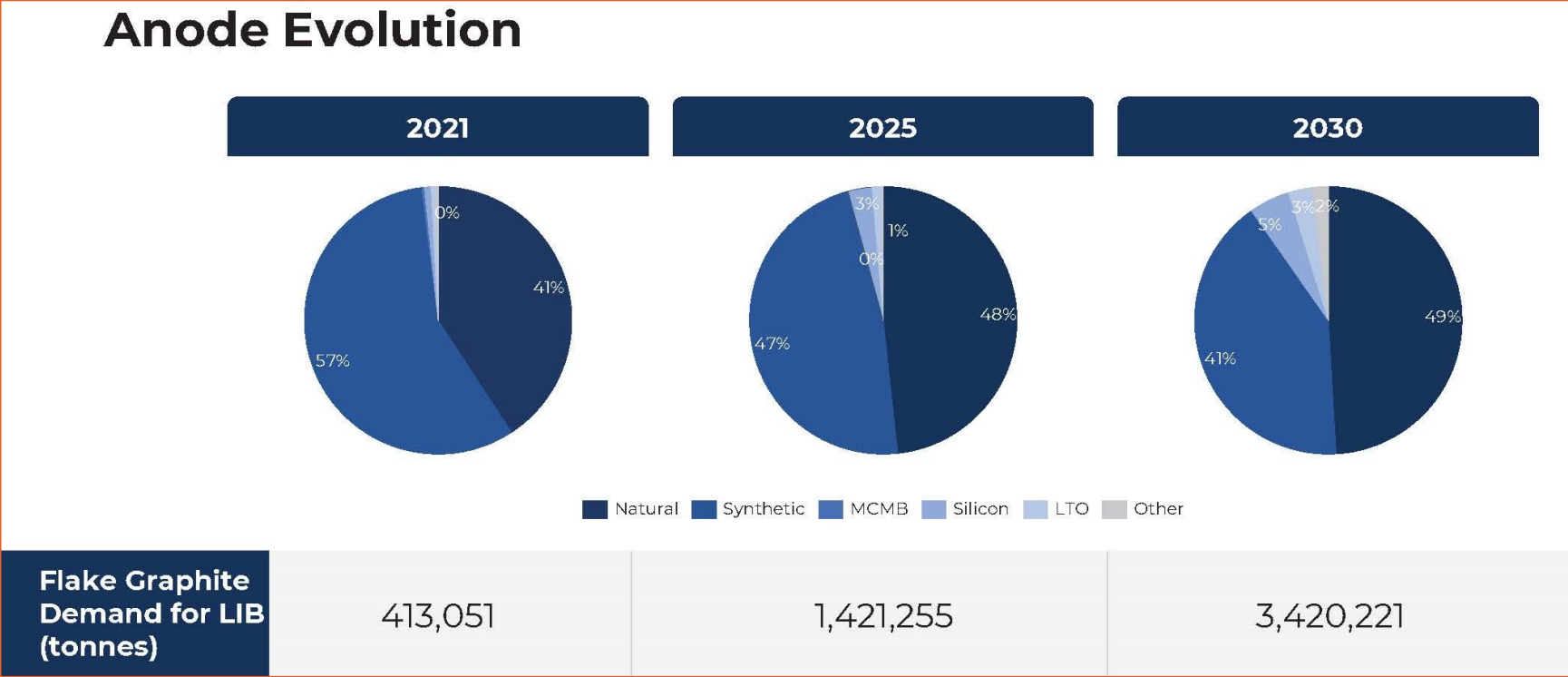
The Average electric car battery contains 200 pounds of Graphite

Graphite is listed as a critical mineral and there is NO graphite mining in the United States

China mines over 70% of global graphite and produces 90% of all electric car batteries.

The Graphite Creek Deposit was named the largest graphite deposit in the United States by the USGS

Demand Forecast for Flake Graphite in Anodes to 2030



Q4 2021  BENCHMARK
MINERAL
INTELLIGENCE

How Does Graphite Creek Stack-up

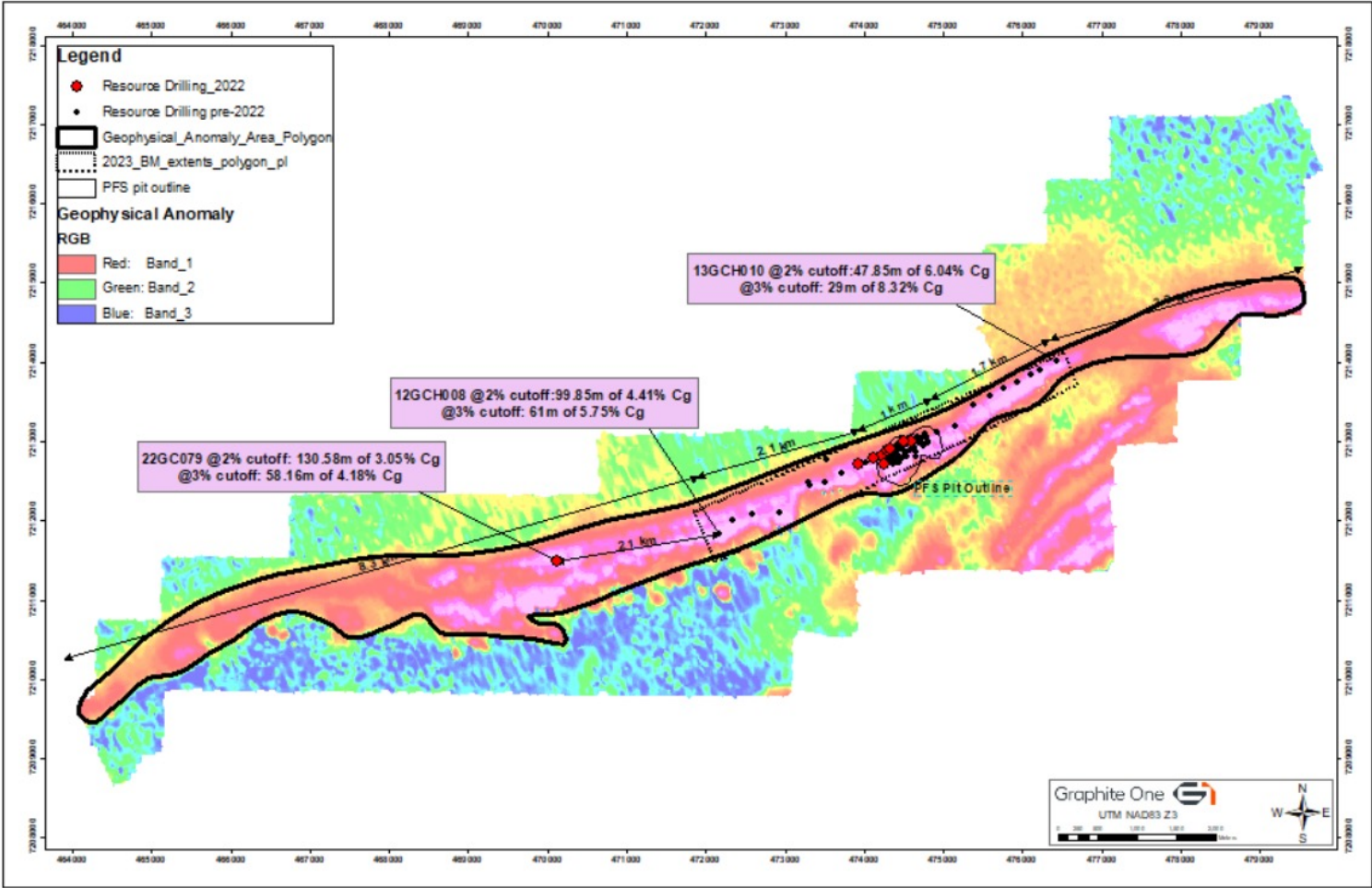
Deposit	Country	Latitude ^g	Longitude ^g	Tonnage (Mt) [*]	Grade Cg (%)	Contained graphite (Mt)
Balama ^a	Mozambique	- 13.32	38.65	1,420	10	142.2
Mahenge ^b	Tanzania	- 8.85	36.72	212	7.8	16.5
Nachu ^c	Tanzania	- 9.91	38.87	174	5.4	9.4
Molo ^d	Madagascar	- 23.99	45.13	141	6.1	8.7
Graphite Creek ^e	USA	65.04	- 165.54	103	8	8.2
Zavalyevskiy ^f	Ukraine	48.20	30.03	100	5.5	5.5

Source USGS – Insights into the metamorphic history and origin of flake graphite mineralization at the Graphite Creek graphite deposit, Seward Peninsula, Alaska USA

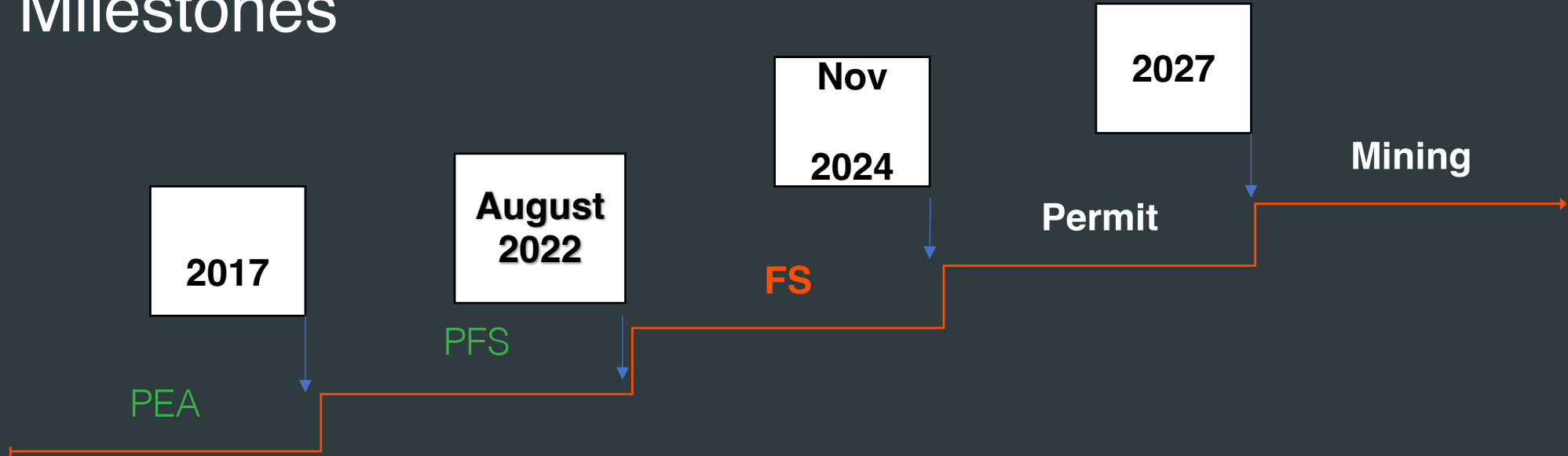
2023 Resource Estimate

Category	Cg% Cutoff	Graphite Creek 2023 Resource			Graphite Creek 2022 Resource			Change %
		tonnes	Cg%	Tons Cg	tonnes	Cg%	Tons Cg	
Measured	2%	5,627,763	5.75%	323,827	4,667,517	5.83%	272,204	19%
Indicated	2%	31,961,600	5.03%	1,607,577	27,872,578	5.15%	1,435,139	12%
Inferred	2%	243,697,259	5.07%	12,343,771	254,667,440	5.11%	13,003,962	-5%
Measured and Indicated	2%	37,589,363	5.14%	1,931,405	32,540,096	5.25%	1,707,343	13%

How Does Graphite Creek Stack-up (26% included)



Graphite Creek Project Major Milestones

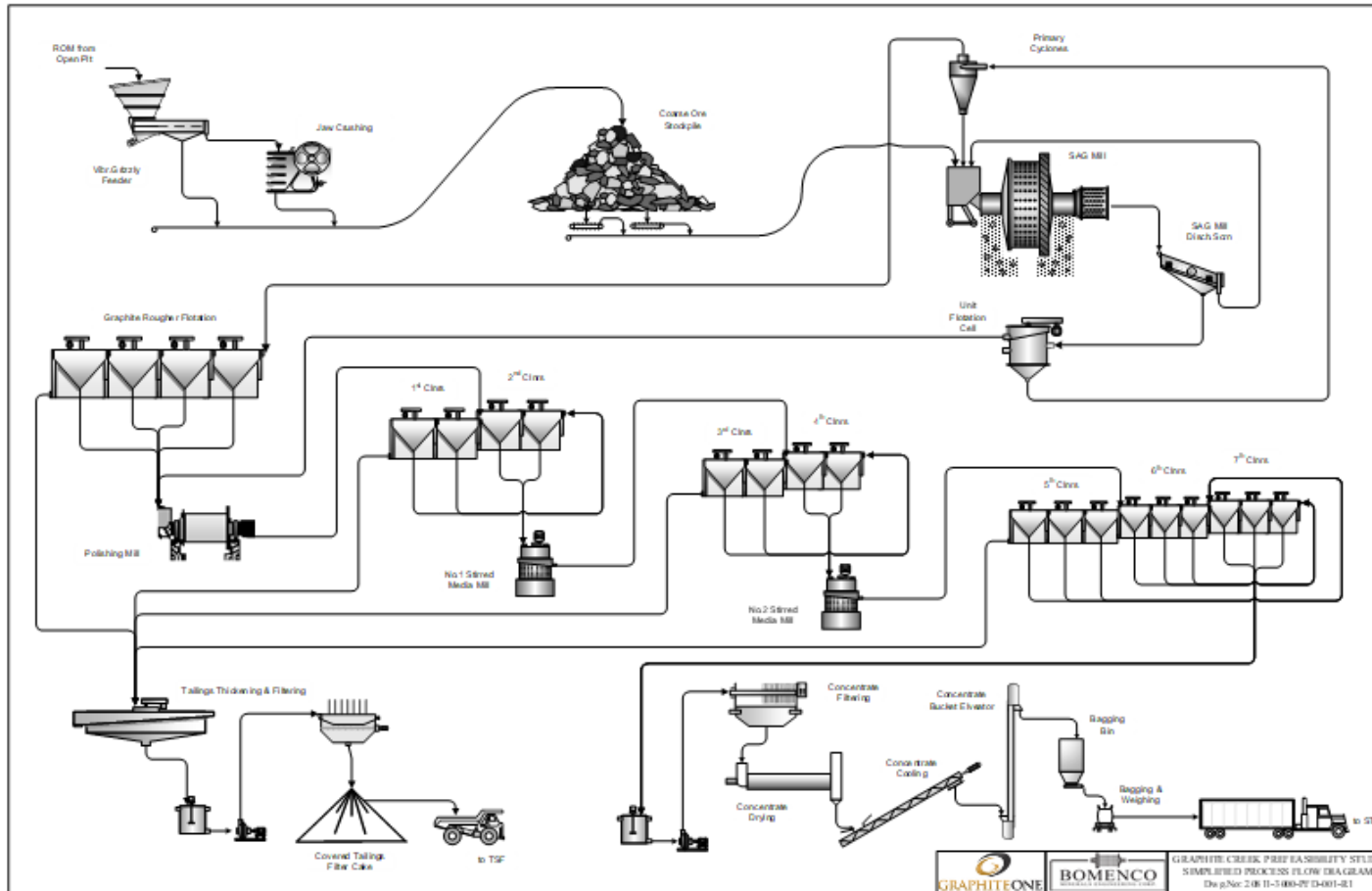




Graphite Creek Deposit
Kigluaik Mountains

Milling Flowsheet

Figure 17-1: Simplified Process Flow Diagram



Source: [Bomenco](#) (2022)

Mill Design:

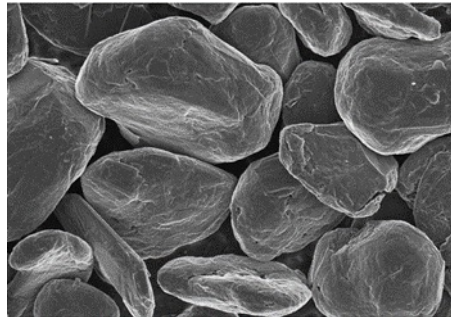
- 1m tons/year feed @ 5.2% Gr
- 250 Um grind
- 7 stages of flotation
- 92% graphite recovery
- 95% final graphite grade
- 53,000 tons/year of graphite

Mine Design

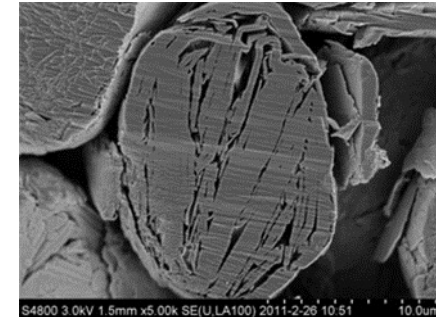
- open pit
- Strip ratio of 2.2:1
- 24' benches
- Year-round operations
- Mining rate of 10,000 TPD
- cut-off grade 2%

Secondary Treatment Plant

- Graphite Creek concentrate to be shipped to the STP in Washington State.
- Location to be finalized
- Hydroelectric power will be used to mill, shape, and purify/graphitize input materials into the following products (planned production capacity, two phases):
 - Anode materials for Li-ion batteries: 4 anode products; 56,400 tons per year
 - Purified graphite products (99% Cg) for specialty markets: 8,360 tons per year
 - Unpurified graphite products (95% Cg) for traditional markets: 20,530 tons per year
- Total: 85,290 tons per year



SEM Picture of CPSG



Coating layer from
CPSG cross section

Ongoing Community Engagement

- Graphite One believes involving the local communities is crucial for a successful project.
- Community meetings held since 2012 in:
 - Teller
 - Brevig Mission
 - Nome
- Subsistence Advisory Committee (SAC)
- “It’s not just about listening; it’s about incorporating what you hear into a successful operation.”



Goals for 2023 Program:

- Continue environmental work for permitting efforts
- Continue Community and Subsistence Advisory Committee (SAC) meetings
- Complete additional drilling to double the proven and provable reserves
- Begin Feasibility Study in Q3 '23
- Complete required geotechnical drilling for road, tails, mill and pit sites



Thank You

Mike Schaffner,
Sr. Vice President of Mining
(775) 304-5412

mschaffner@graphiteoneinc.com

Anthony Huston,
President, CEO + Director
(604) 697-2862

ahuston@graphiteoneinc.com

