

KINROSS Fort Knox



October 5

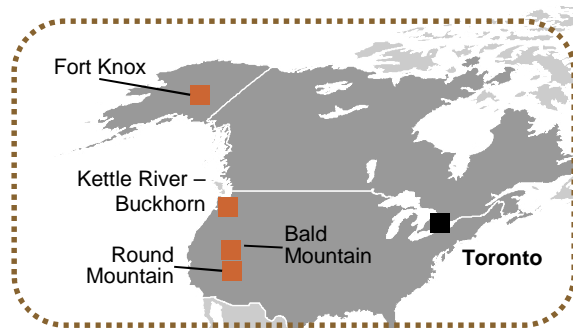
2017

ALASKA ALLIANCE FAIRBANKS INDUSTRY UPDATE FORUM
HISTORY OF THE FORT KNOX MINE & FISH CREEK VALLEY
Mark Huffington

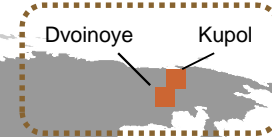


OPERATIONS MAP

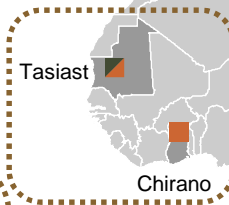
NORTH AMERICA



RUSSIA



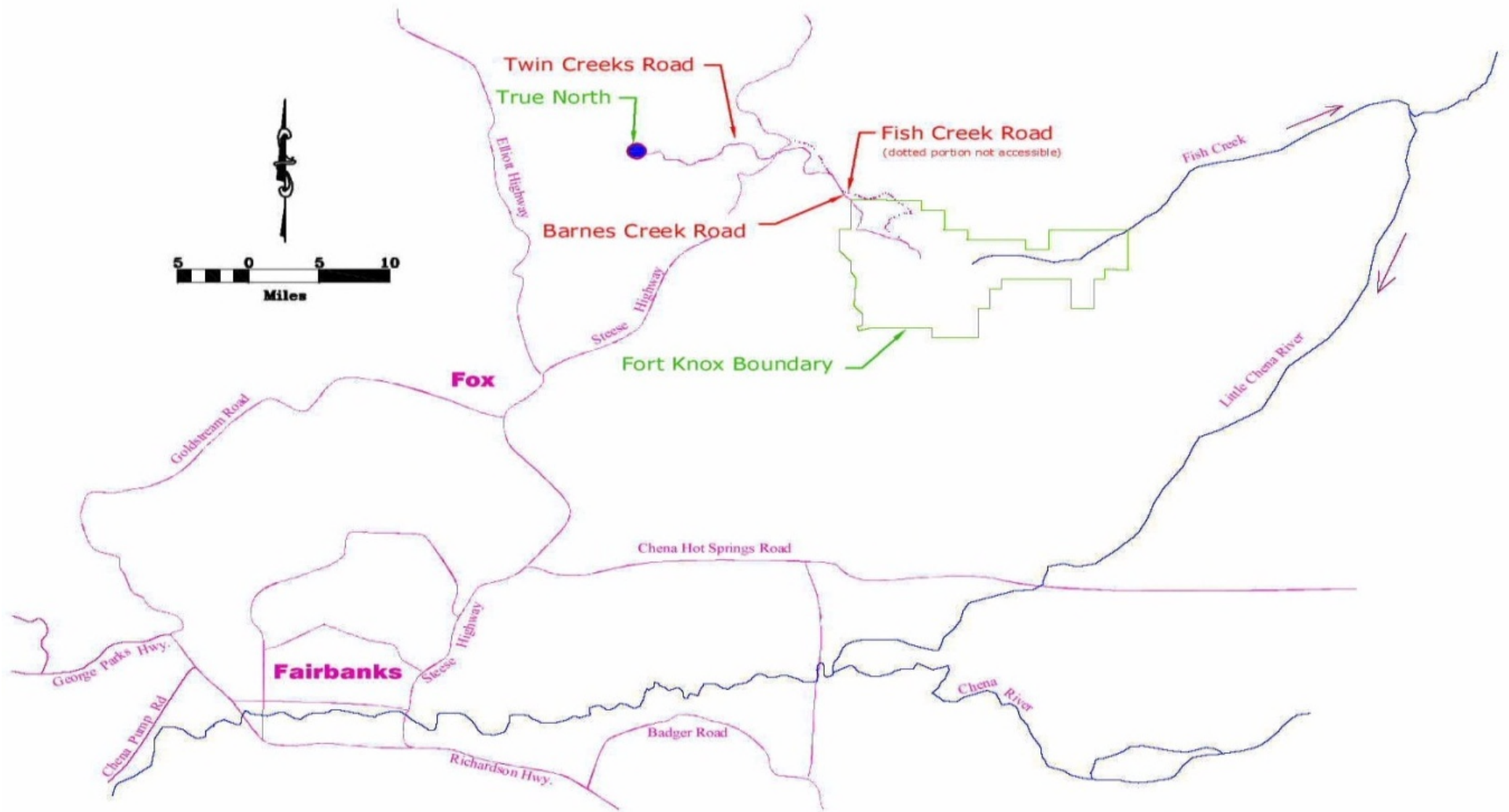
WEST AFRICA



SOUTH AMERICA



FORT KNOX LOCATION



FISH CREEK VALLEY PAST

- **1901** Felix Pedro Discovers Gold Near Fish Creek
- **1902** Felix Pedro Discovery on Pedro Creek
- **1902** H.A. Currier Stakes The Discovery Claim On Melba Creek (State Recorder, 1903)
- **1913** H.A. Currier Staked Auriferous Quartz Veins On The Melba Creek/Monte Cristo Divide
Edward C. Vogt Assembles and Operates A 3-stamp Mill and Circular Concentrating Table Along Melba Creek
- **1910 – 1940** Small Scale Mining For Placer and Lode Gold, As Well As Dredging Operations
- **1942** Moratorium By Federal Government On Non-strategic Metals Mining
- **1960's** Placer Mining In Fish Creek Drainage Resumes

FISH CREEK VALLEY PAST



Felix Pedro

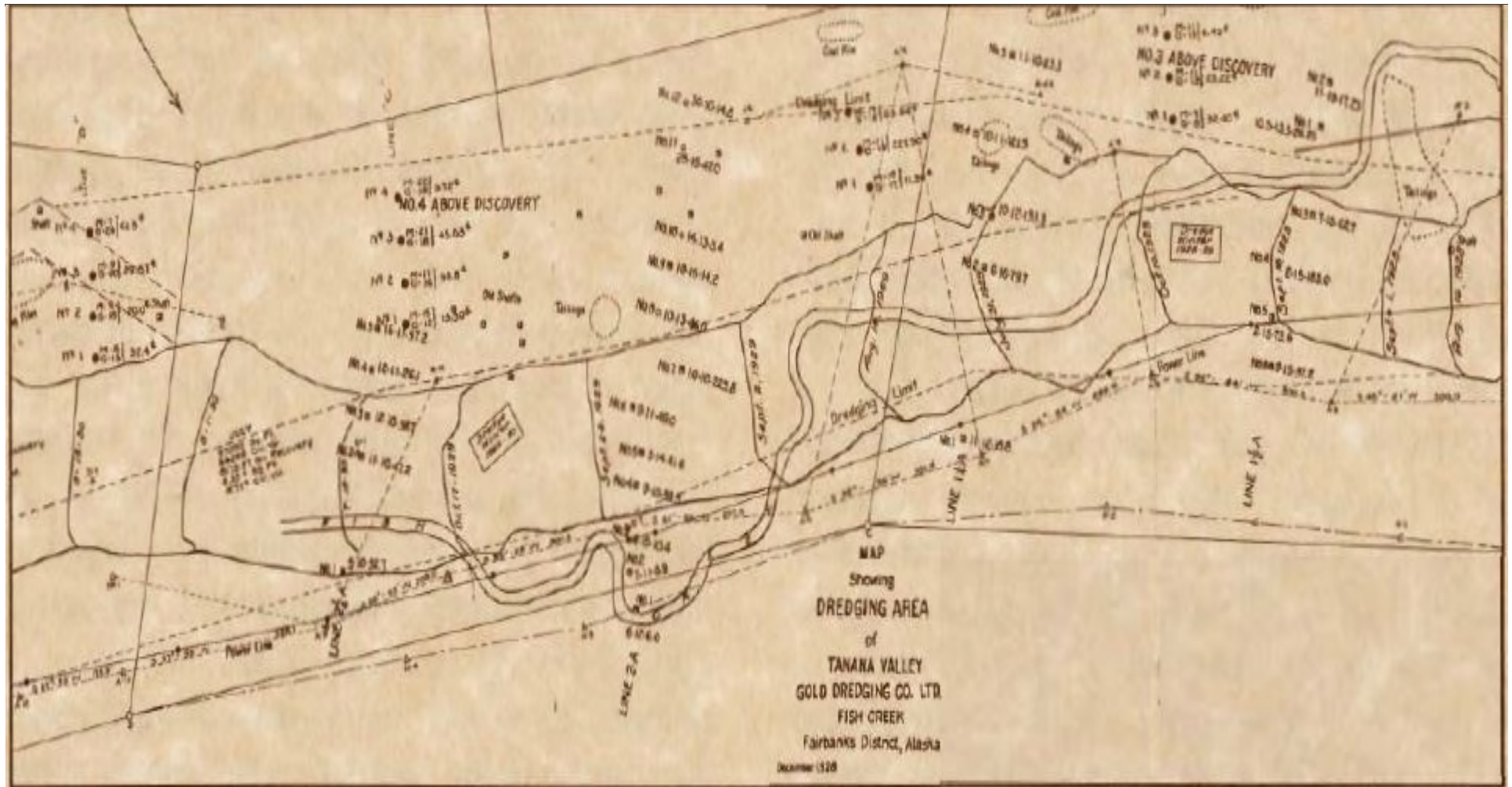


Alfred Brooks

FISH CREEK VALLEY PAST



FISH CREEK VALLEY PAST



Section of an engineering map emphasizing drill test locations and dredged ground. (Courtesy of Alaska Gold Co.)

FISH CREEK VALLEY PAST



*Typical early miners using simple hand tool methods.
(Archives, Alaska and Polar Regions Department,
University of Alaska Fairbanks)*

THE SAMSON HARDWARE CO., Inc

J. E. BARRACK, Mgr.

EXCLUSIVE REPRESENTATIVES FOR

**Nissen Stamp Mills, American Hoists, Samson
Cables, Giant Powder Co., Bagley Graders.**

We carry a complete stock of everything the Mining
Man may call for:

POINTS, PIPES, CABLE, BOILER FITTINGS, ETC.

We Carry the Best Powder and Fuse Money Can Buy. Quartz Mill Re-
pairs for All Makes of Mills Will Be Quoted on Application.

**OUR MACHINE SHOP AND FOUNDRY IS
COMPLETE AND UP TO DATE.**

No job of repair work too big for us to do promptly.
LET US FIGURE WITH YOU.

Right Prices—Right Goods—Right Treatment

*Period advertisement for a local business attempting to
attract lode miners. (Tanana Magazine 1912).*

FISH CREEK VALLEY PAST



KINROSS

kinross.com

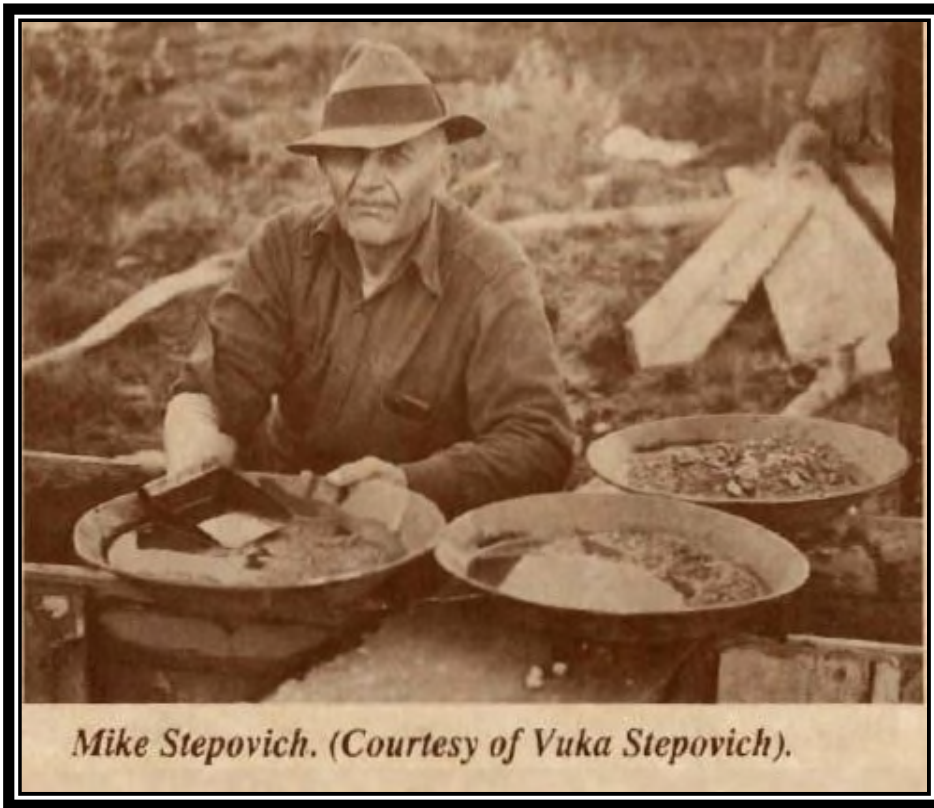


FISH CREEK VALLEY PAST

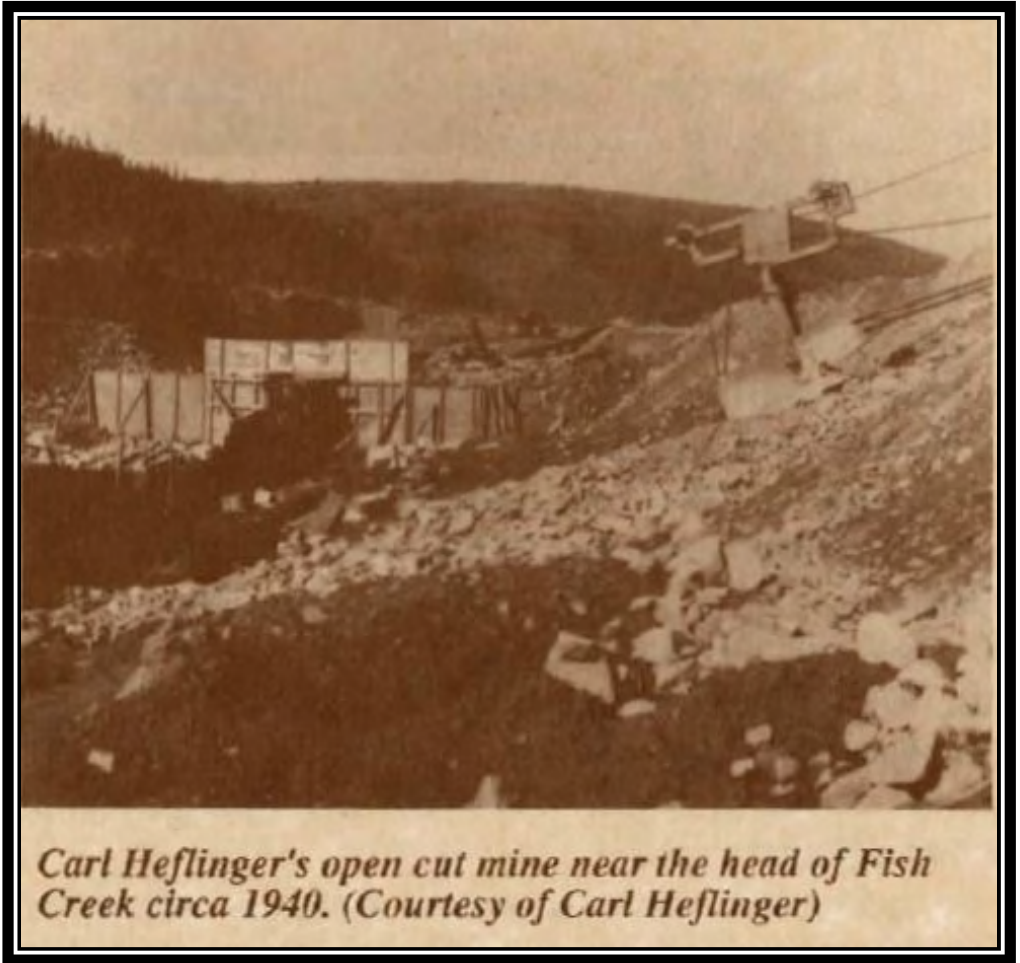
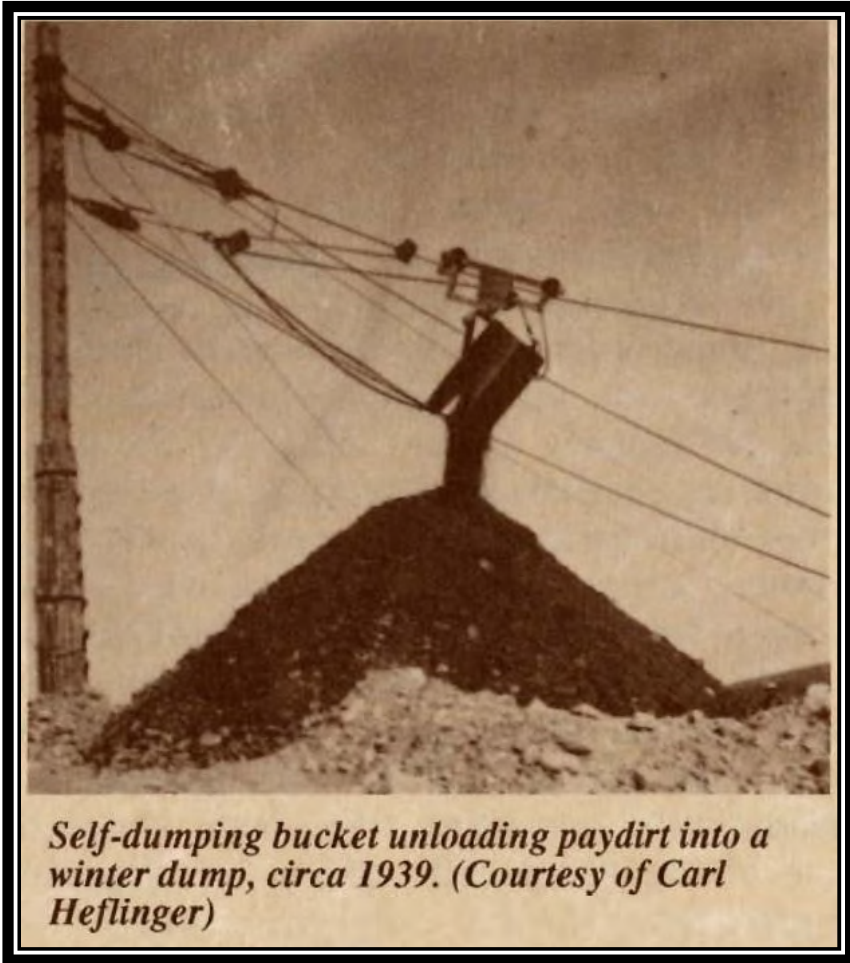


The daughters of Nels Jackson playing outside the cabin at the mine camp. (Courtesy of Naimy Jackson Birkliid)

FISH CREEK VALLEY PAST



FISH CREEK VALLEY PAST



FISH CREEK VALLEY PAST

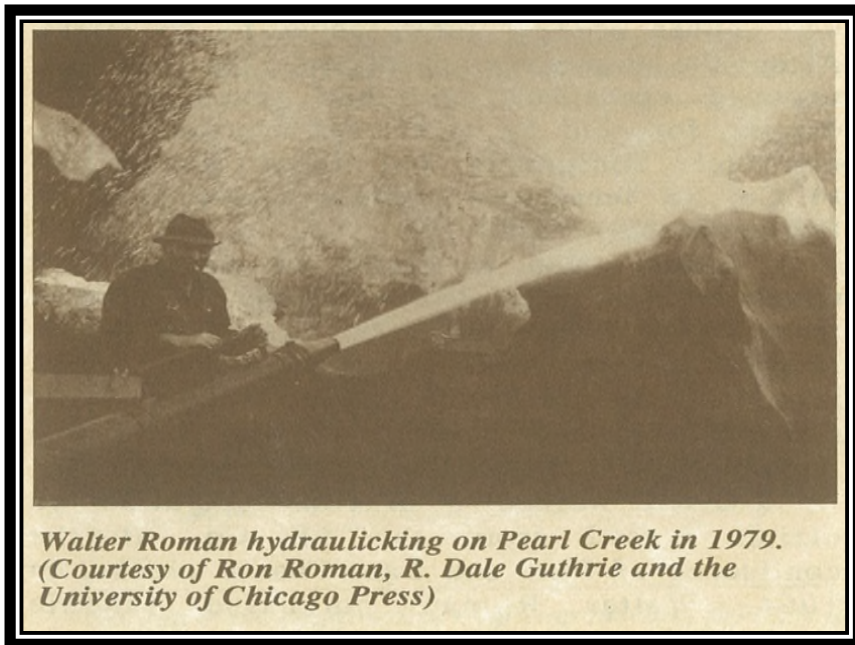


The FE Company operated Dredge No.7 in 1940 and 1941 extracting gold from over two miles of Fish Creek.

FISH CREEK VALLEY PAST

- **Blue Babe**

- Bison found by the Walter and Ruth Roman and sons in 1979
 - Placer miners
 - Yellow Pup area of Fort Knox
 - Died 36,000 years ago

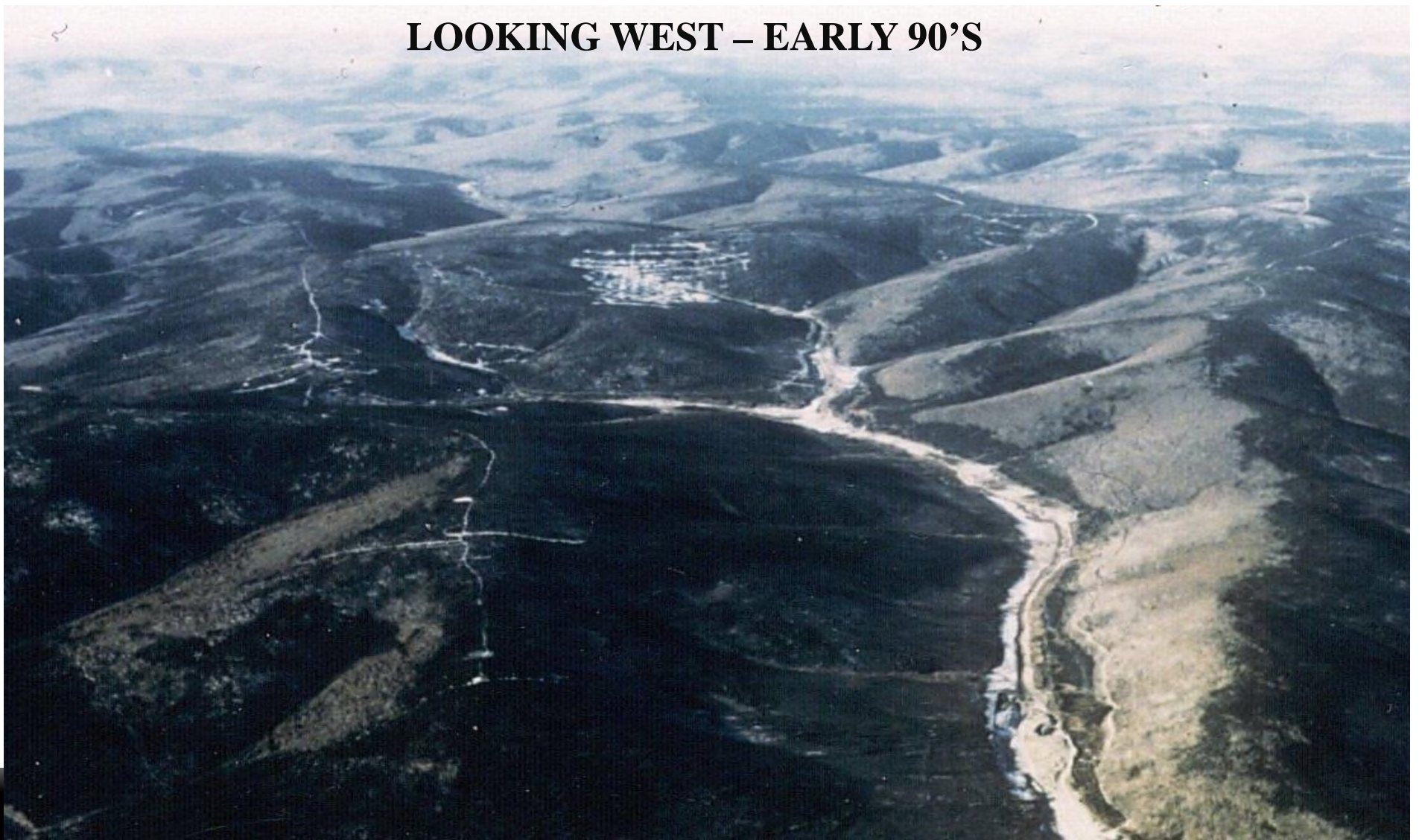


UAF Photo

<http://www.alaska.edu/uajourney/history-and-trivia/blue-babe-a-messenger-fro/>

MINE HISTORY

FORT KNOX LOOKING WEST – EARLY 90'S



MINE HISTORY

- 1980 – Claims named Fort Knox**
- 1984 – Visible gold discovered on claims**
- 1994 – State & Federal permits issued**
- 1995 – Project construction began**
- 1996 – First gold pour**
- 1997 – Fish Creek wetlands restoration**
- 2009 – First gold poured from Heap Leach**
- 2011 – 5,000,000th ounce of gold poured**
- 2013 – 6,000,000th ounce of gold poured**
- 2016 – 7,000,000th ounce of gold poured**

MINE HISTORY

- 1980
 - Prospectors staked 19 placer mining claims
 - Claims were named Fort Knox
- 1982
 - 34 more Fort Knox claims were staked
- 1984
 - Rod Blakestad discovered visible gold in granite
- 1987 - 1992
 - Extensive exploration program
 - 427 holes were drilled
 - 262,00 feet



MINE HISTORY

FORT KNOX
LOOKING SOUTHWEST – EARLY 90'S



KINROSS

kinross.com



MINE HISTORY

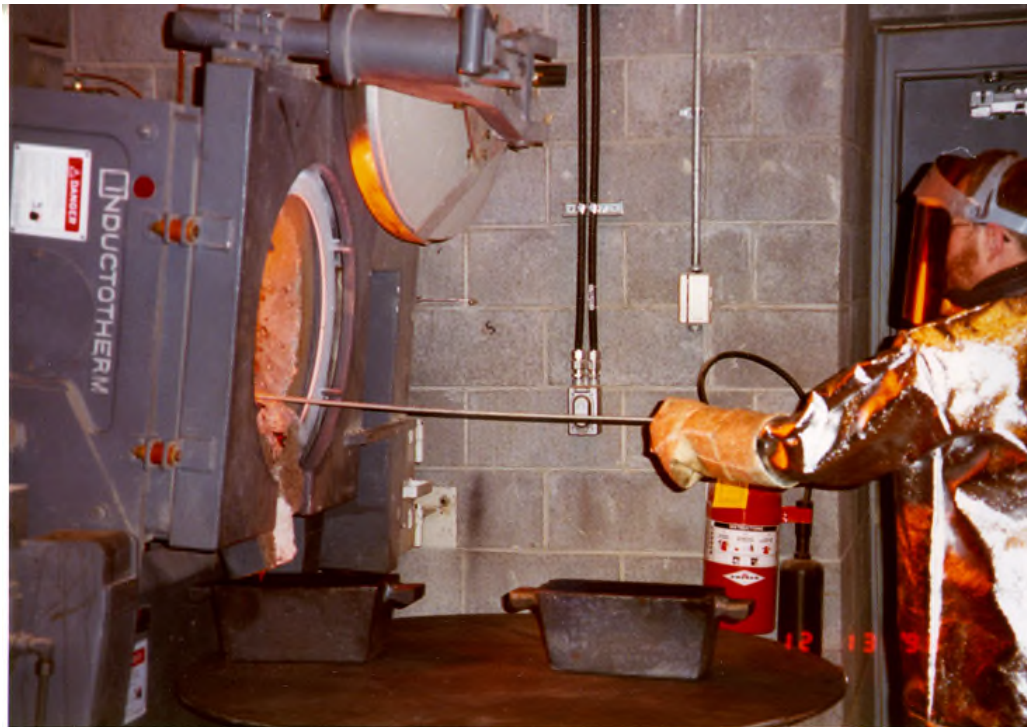
- 1992
 - Amax Gold Inc. acquired ownership of Fort Knox Project
- 1994
 - State and Federal permits issued
- 1995
 - Project construction began



Top: Larry Lynch, Doug Nicholson, Ken Hack, Kevin Brown, Warren Woods, Derek Brown, Roger Magnuson, Curt Ruesch, Chris Kennedy
Bottom: Bill Jeffress, Steve Lang, Arne Bakke, Tom Irwin

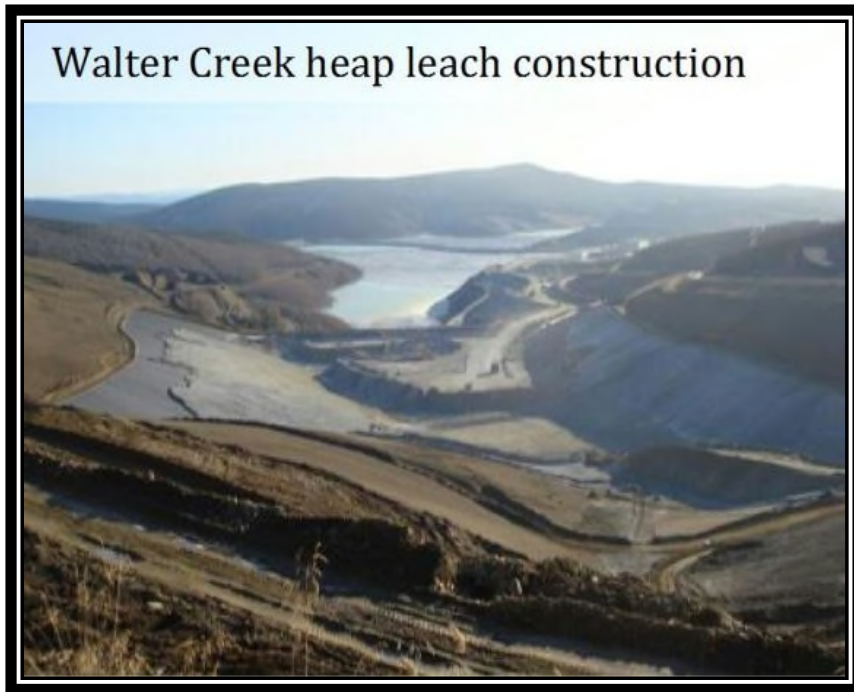
MINE HISTORY

- 1996
 - First gold pour
- 1998
 - Kinross Gold Corporation acquisition



MINE HISTORY

- 2009
 - Walter Creek Heap Leach Facility
 - First gold pour



FORT KNOX PRE 1996 WETLANDS COMPLEX

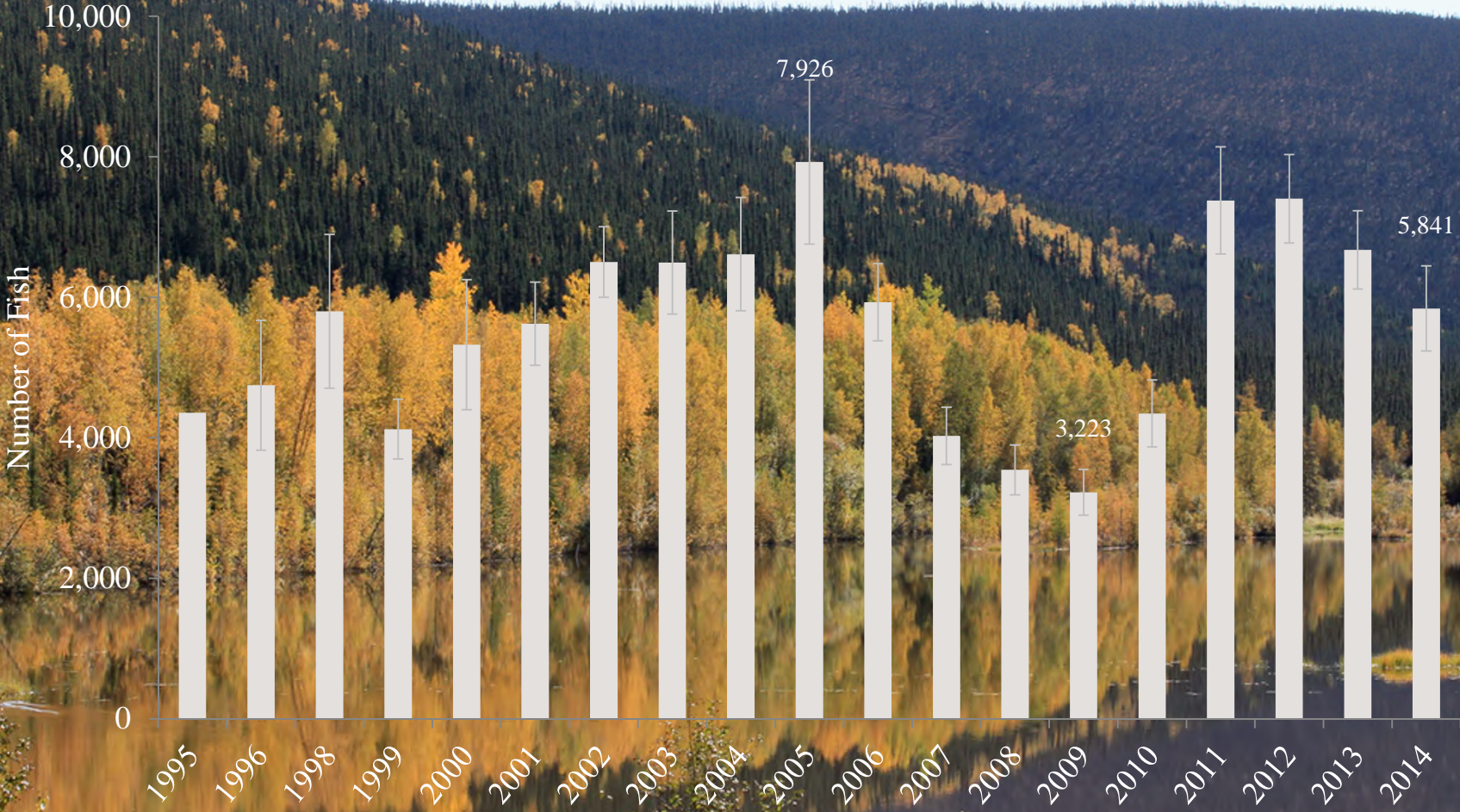


FORT KNOX WETLANDS COMPLEX 2016



FRESH WATER RESERVOIR

Arctic Grayling Population Estimates >200mm (95% CI)



Source: ADF&G 2015

FORT KNOX & FISH CREEK VALLEY





KINROSS

