



Kurt Parkan
External Affairs Manager
September 26, 2013

Location



Donlin Gold Project



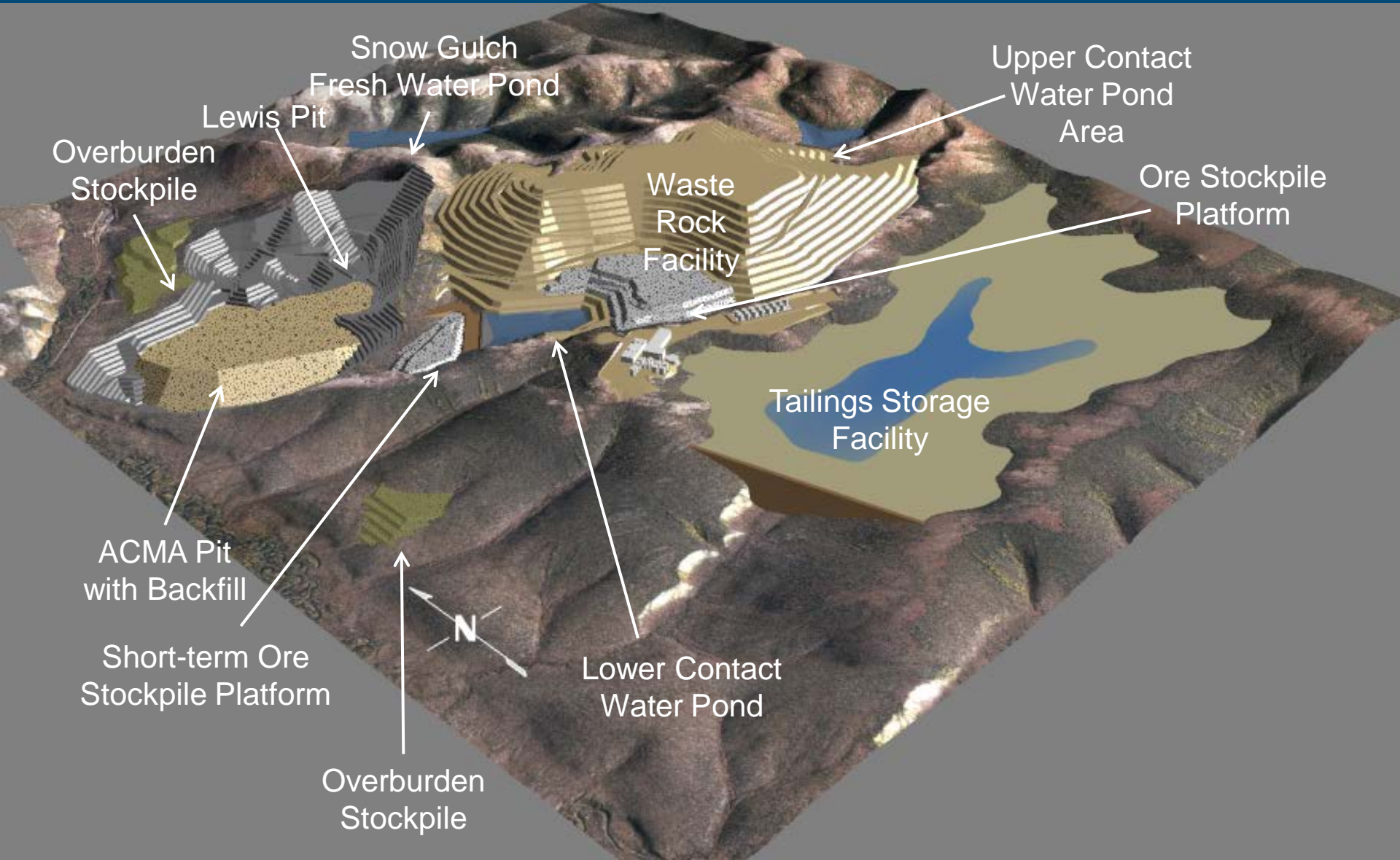
- 50/50 partnership with Barrick Gold and NOVAGOLD
- Resource on lands owned by Calista Corp. and The Kuskokwim Corp. (TKC)
 - Selected by Calista for resource development
 - Exploration and mining agreement with Calista
 - Surface use agreement with TKC
- Project studies ongoing since 1995
 - Resource definition
 - Engineering studies
 - Environmental baseline data collection

Project Overview

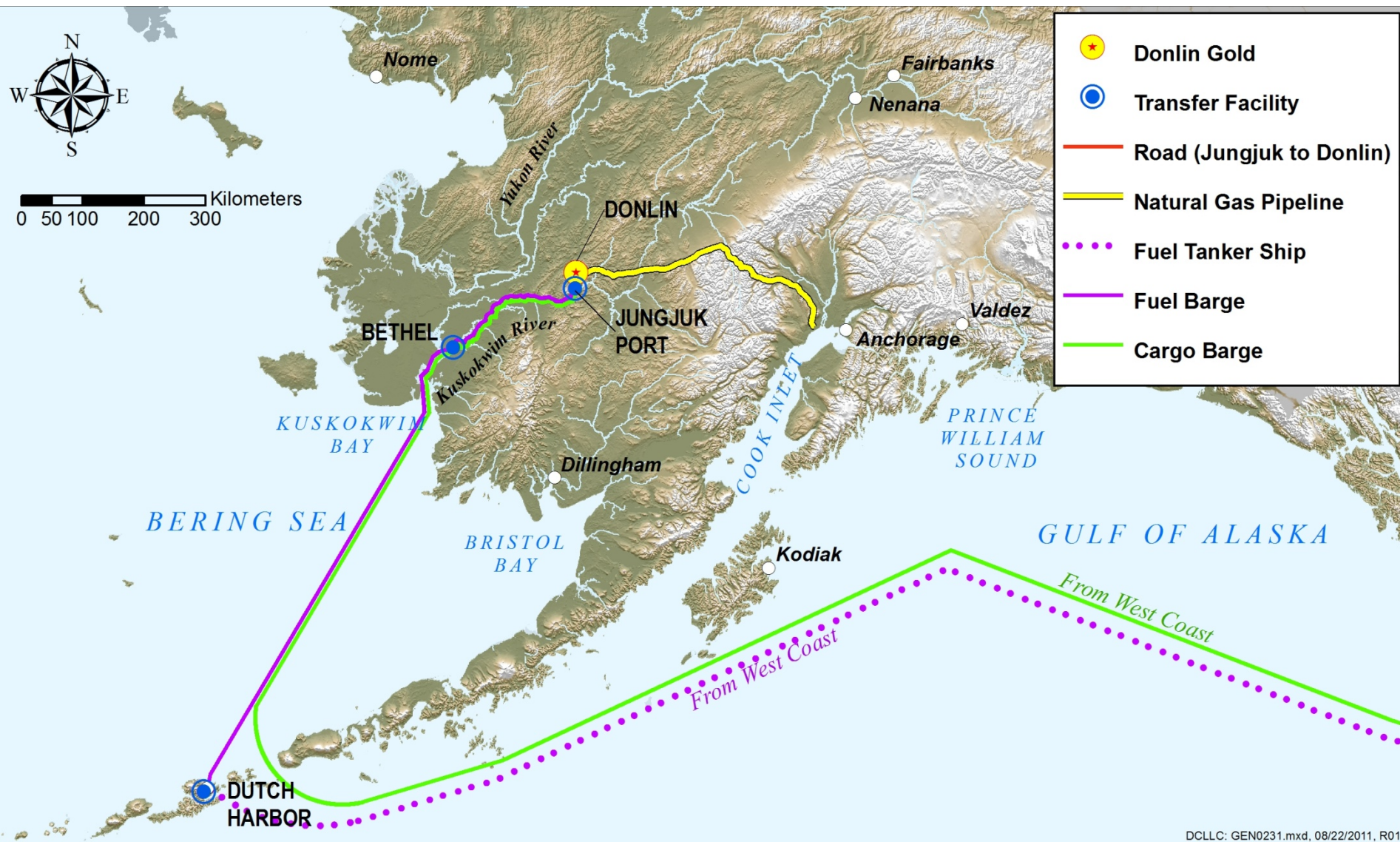


- **Reserves:** 33.9 M oz of gold
- **Mine Life:** ~27+ years
- **Production:** ~ 1.1 M oz/year
- **Operation:** Open-pit
- **Milling:** 59,000 tons/day
- **Strip ratio:** ~5.5:1 = ~3B tons waste rock
- **Tailings:** Fully lined storage facility
- **Infrastructure:** 5,000 ft runway, camp for 600 employees
- **Equipment:** 69 haul trucks (400 ton/ea), electric shovels
- **Power:** ~150MW power plant
314-mile natural-gas pipeline from Cook Inlet

Site Layout



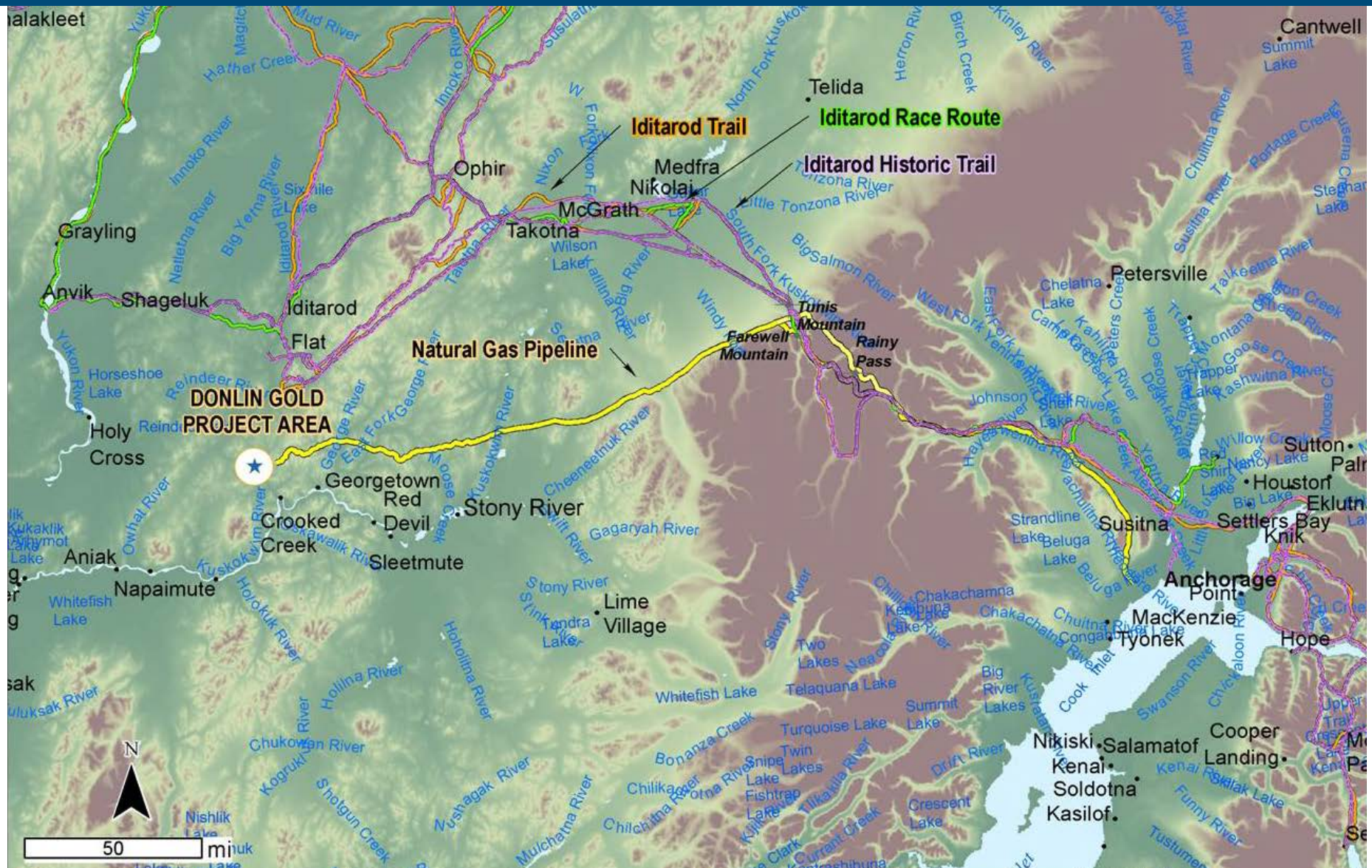
Logistics and Supply Chain



Project Power Demand

- On site generation using Wartsila combined cycle units
 - Similar to MEA plant currently in construction
- Average running load 153 MW
- Peak load 182 MW
- Constant year round load
- Major power consumers
 - Grinding Circuit 65 MW
 - Oxygen Plant 30 MW
 - Electric Shovels 21 MW
 - Process Water 16 MW
 - Oxidation 7 MW
- Additional mobile fleet fuel of ~40 million gallons/year

Natural Gas Pipeline



Natural Gas Pipeline



- Pipeline
 - 315 mile, buried, 14” steel pipeline
 - Above ground for two fault zone crossings
 - Class I for entire alignment
 - 70 mmcf capacity (estimated 30 - 40 demand)
 - 1,480 psig max allowable operating pressure
 - HDD and trenching for river crossings
- Facilities
 - Single compressor station
 - Pig-launching/receiving stations (start, middle, end)
 - 20 manual block valves
- Construction
 - 2 construction spreads, each with 3-4 sections
 - Construction period over 2 winters and 2-3 summers
 - Season for each section based on terrain and geotechnical conditions

Permitting Timeline

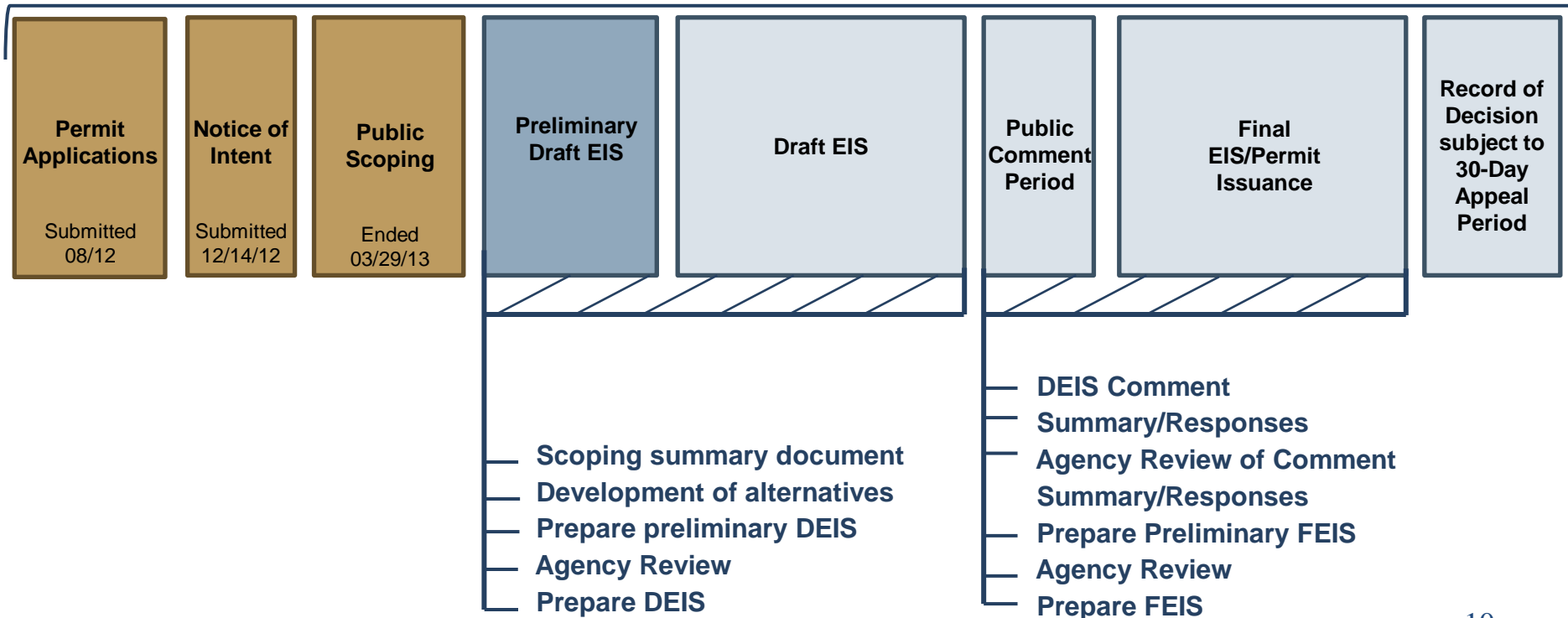
~3-4 year Process



Current Status

2012

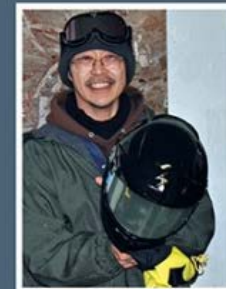
2016



Economic Benefits



- \$375 M annual construction payroll (3,000 jobs)
- \$ 97 M annual payroll during operations (600-1,400 jobs)
- Royalties under 7(i) and 7(j) provisions of ANCSA
- State taxes
- Healthier economy



2013 Employer of the Year



National Association of State Workforce Agencies

